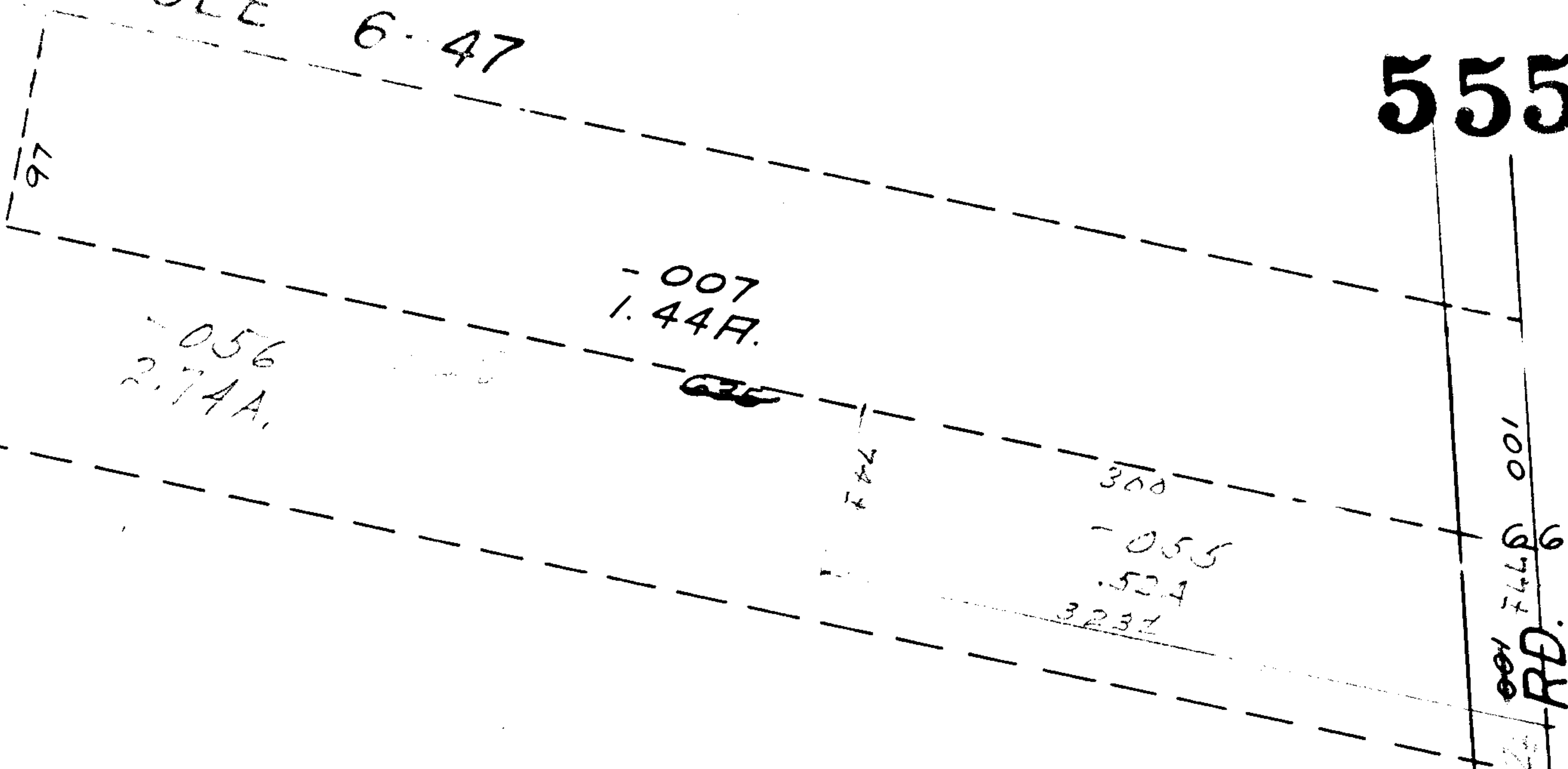


5553

SEE 6-47



-056
2.74A.

-007
1.44A.

-055
.524
3237

RD. 6
100

200
592.31

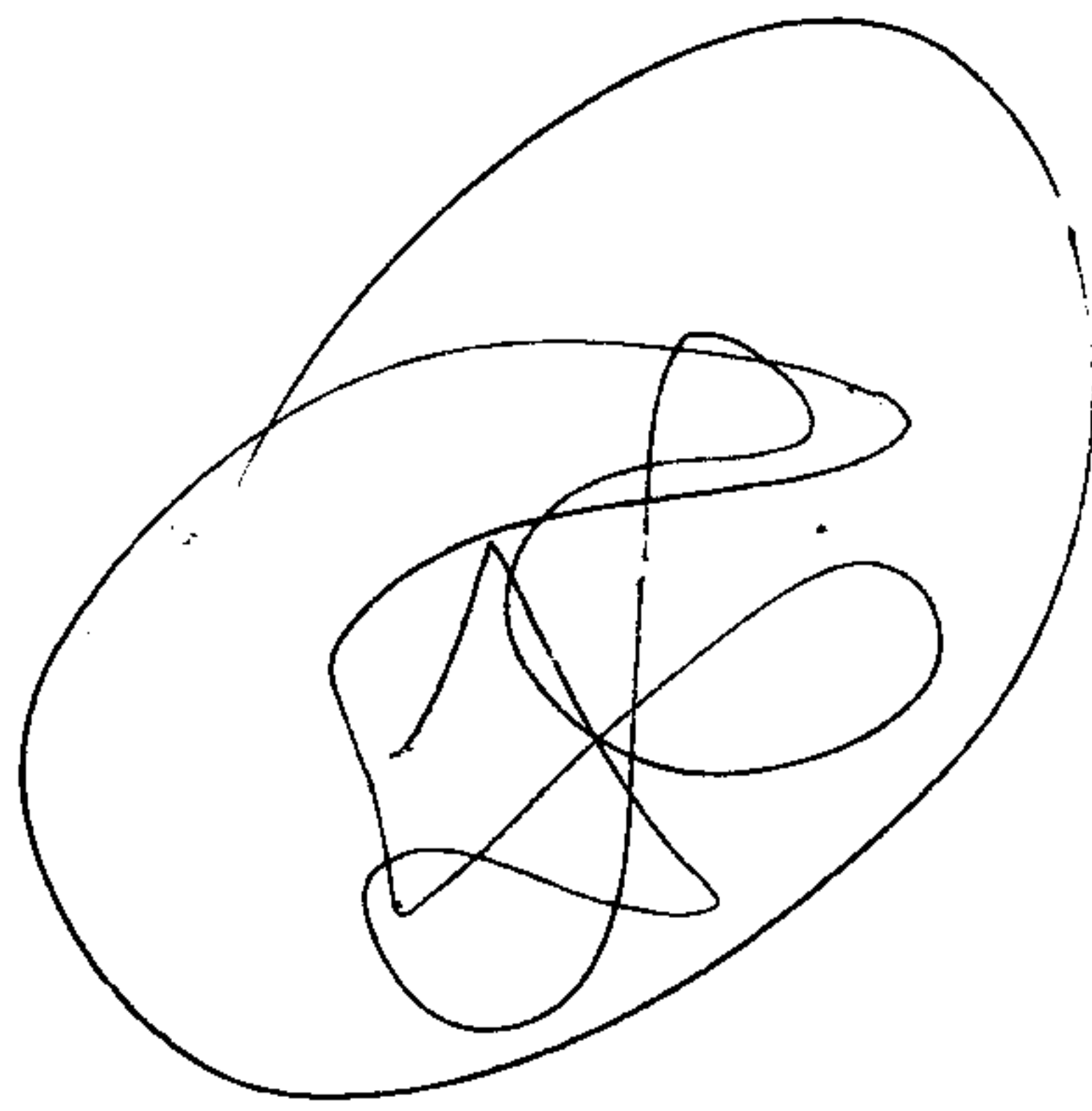
450

60.15

105°09'

30

-049
20.63A



MAR 17 ENT'D

1512.90

APPROVED
LORAIN CO.
MAP DEPT.
DATE
BY R. Kelly

2