

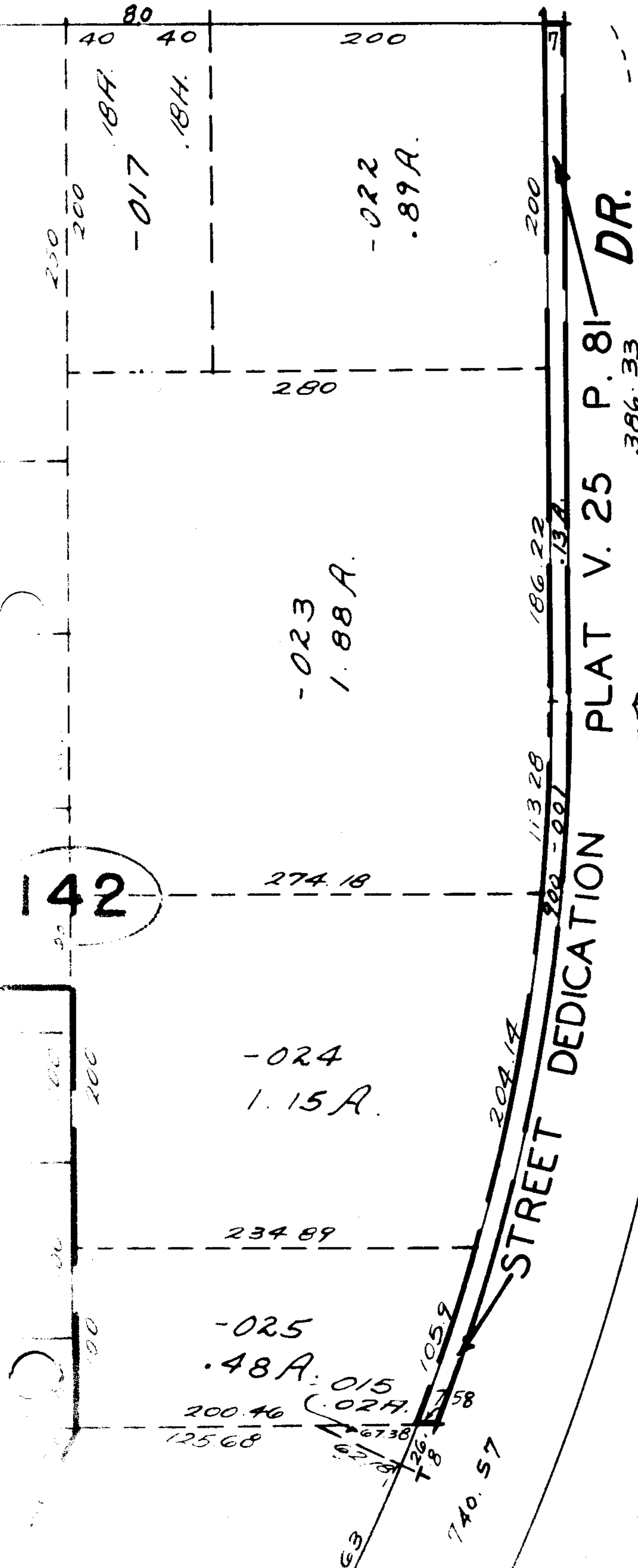
AUGUST

24	11-054	24
	-055	
	-056	
	-057	
48	15-058	24
	-059	
	-060	
	-061	
24	20-062	24

KANSAS

24	21-021	24
	22-022	
	23-023	
	24-024	
19	25-025	19
53	26-026	53
	27	
	28	
72	29-027	72
	30-028	

5499



ST.

LEWIS

SEE 3-00-053-A

5499

APPROVED
LORAIN CO.
MAP DEPT.

DATE 12-27-71

200-051-B

BY *J. Dulbert*

d.s.
7-21-81

MAR 15 1972

2-00-051-129

144

-003
~~001~~
~~9-20-77~~
8.95A.

11.28
2.33
8.95