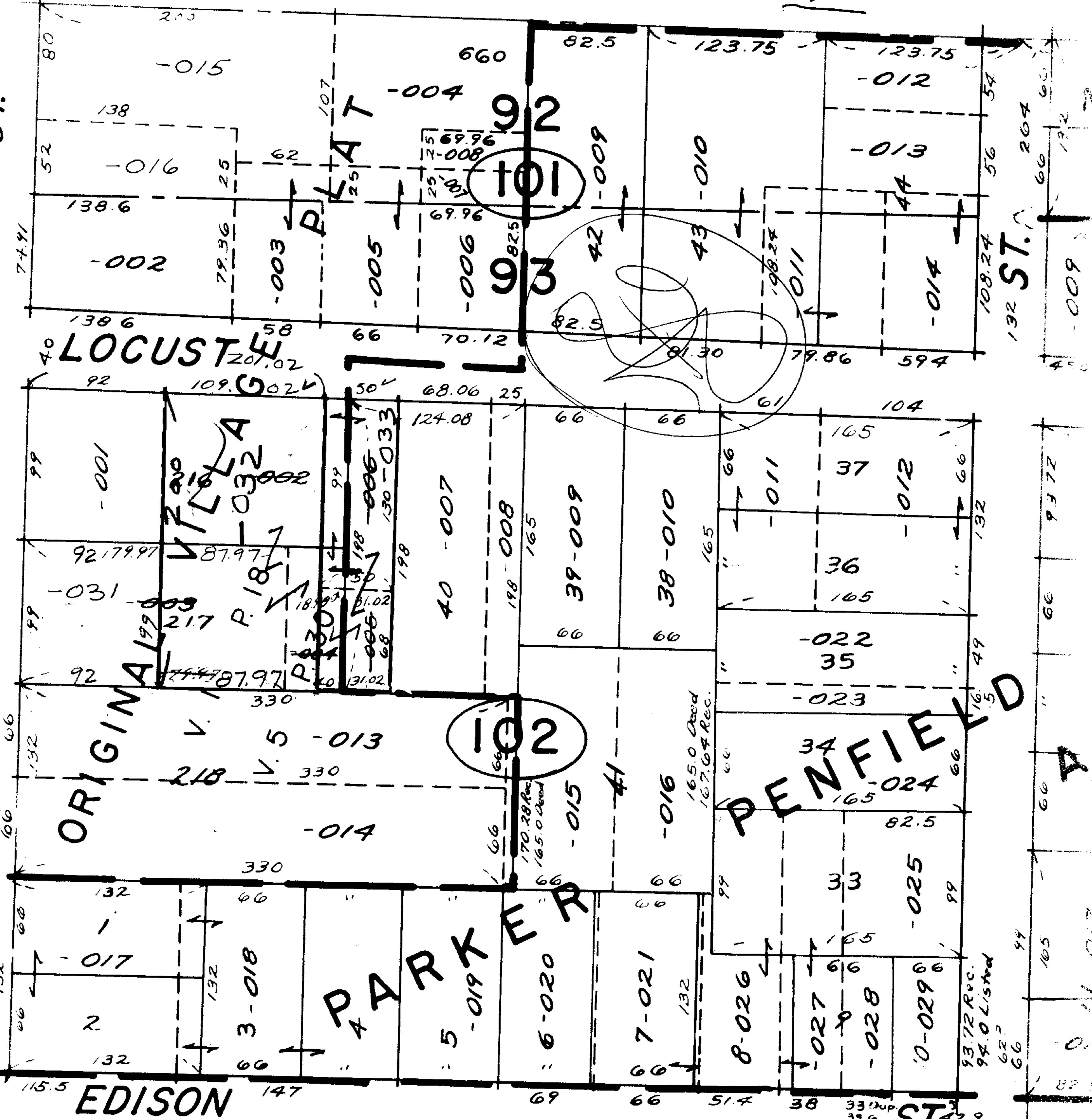


5492 SEE 9

ST.



109.02  
92  
201.02

LOCUST W

ORIGINAL

PARTIAL

DENIED

EDISON

ST.

102

500

5492  
APPROVED  
LORAIN CO.  
MAP DEPT.  
DATE 12-22-71  
19-80-096A  
BY Dup. Cards  
LW Hall

MAR 17 1972

-027  
2 Bldg. Only

-001

004