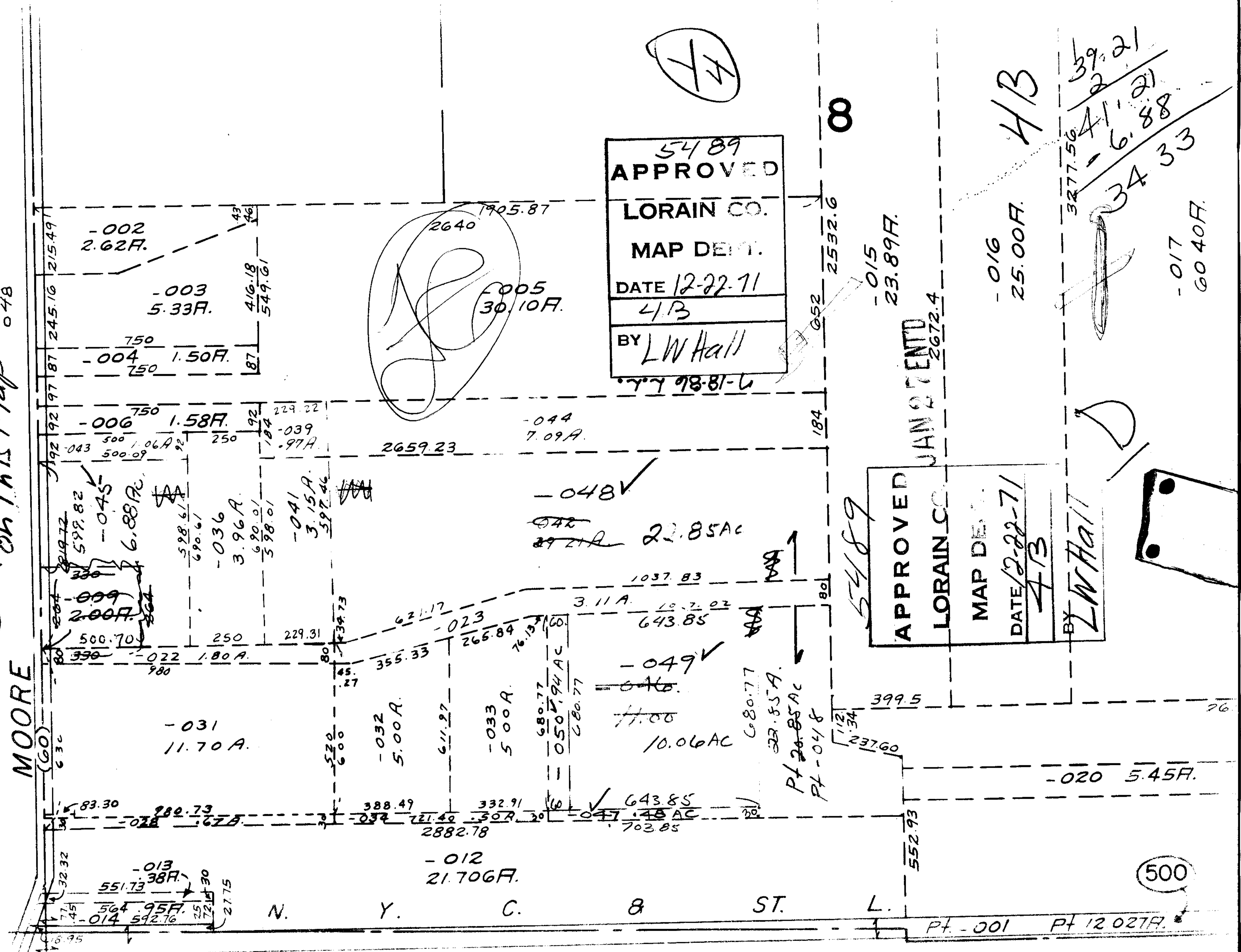


⑤ Splits on This Map 5489

045
046
047
048



5489
APPROVED
LORAIN CO.
MAP DEPT.
DATE 12-22-71
4/13
BY L.W. Hall

APPROVED
LORAIN CO.
MAP DEPT.
DATE 12-22-71
4/13
BY L.W. Hall

HB
-016 25.00A.
-015 23.89A.
-017 60.40A.
39.21
2
41.21
-6.88
34.33

500

MOORE

N. Y. C. ST. L.

Pt. -001 Pt 12 027A.