

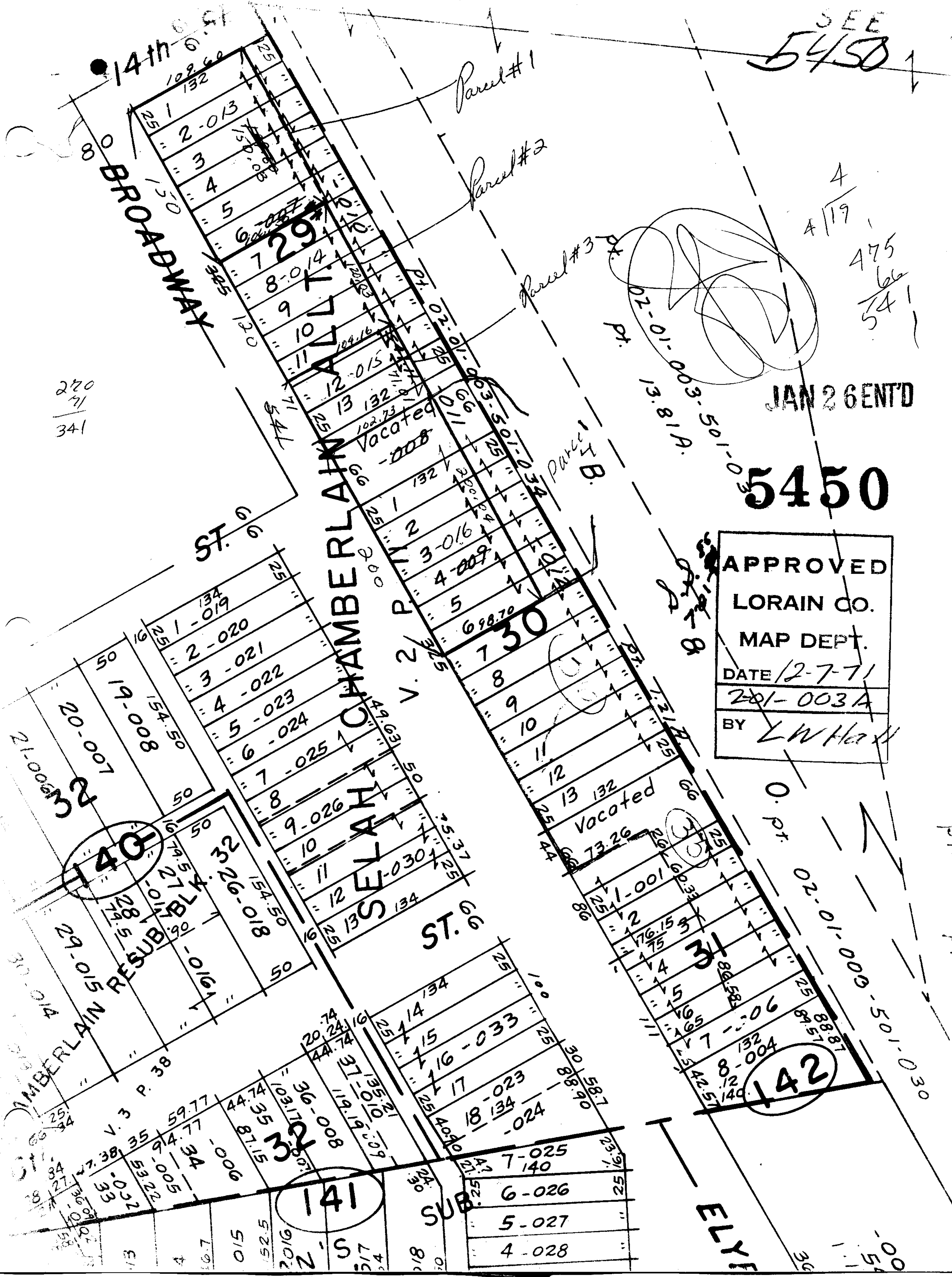
SEE  
5450

4  
4/19  
475  
66  
54

JAN 26 ENT'D

5450

APPROVED  
LORAIN CO.  
MAP DEPT.  
DATE 12-7-71  
201-003A  
BY LWH



270  
41  
341

CHAMBERLAIN 910-60  
RESUB BLK 32  
140

141

142

Parcel #1

Parcel #2

Parcel #3

Parcel #4

ELYE

ST. 6

ST. 6

V. 2 P. 11

V. 3 P. 38

SUB

7-025  
6-026  
5-027  
4-028

Vacated

SELAH

BROADWAY

14th St

