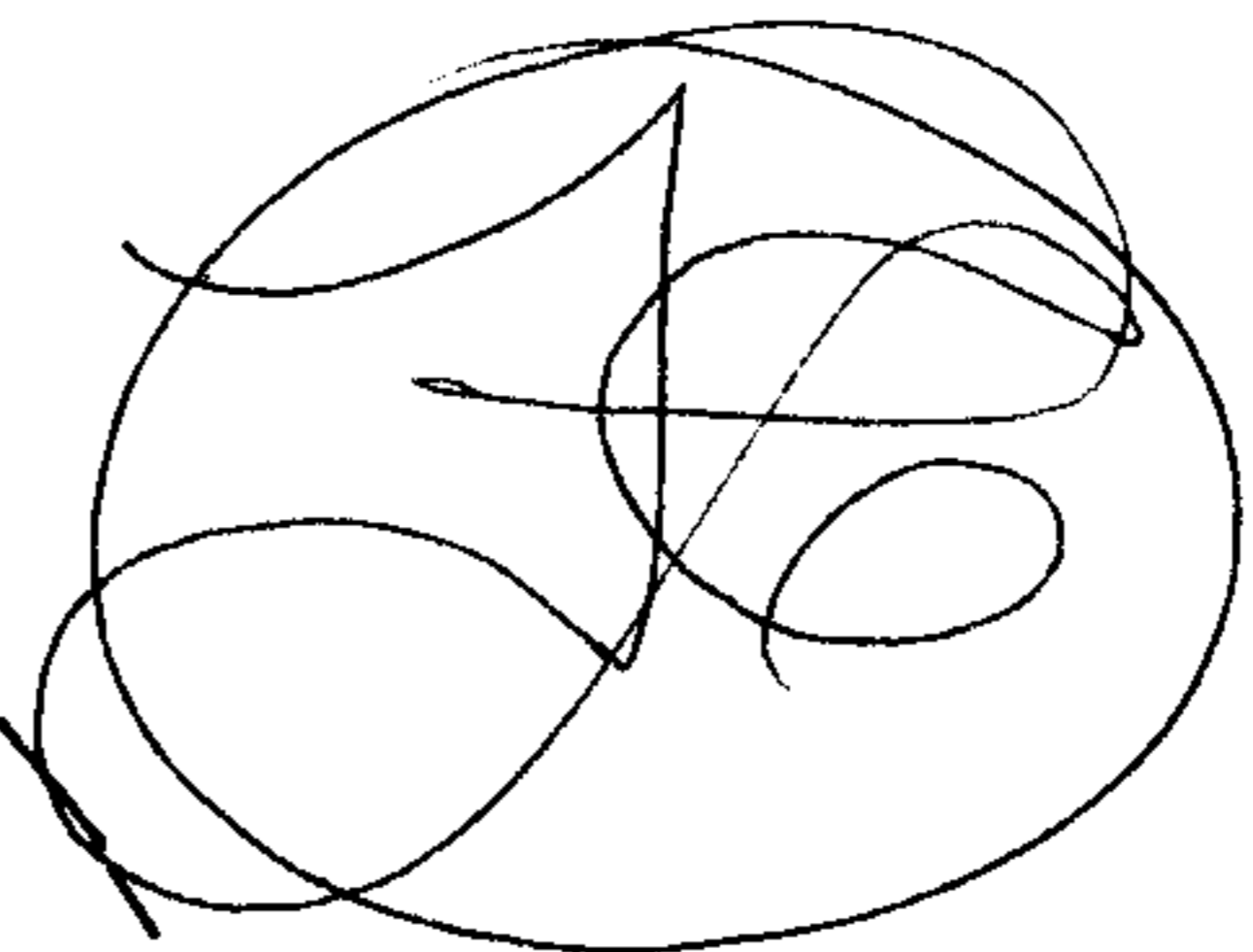


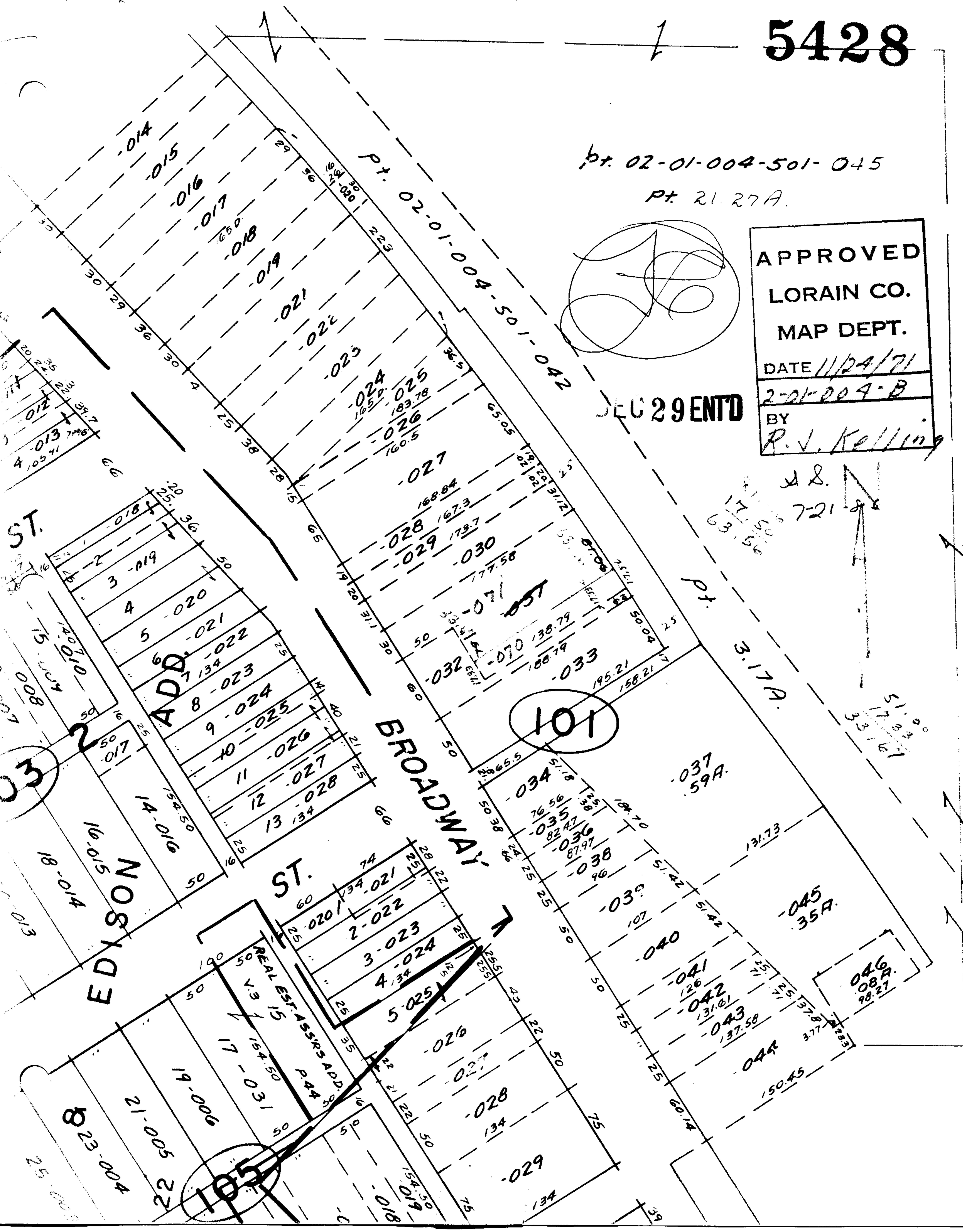
5428

pt. 02-01-004-501-045
Pt. 21.27A.

APPROVED
LORAIN CO.
MAP DEPT.
DATE 11/24/71
2-01-004-B
BY
R. J. Kelling



DEC 29 ENT'D



EDISON ST.
18-014
16-015
14-016
13-017
12-018
11-019
10-020
9-021
8-022
7-023
6-024
5-025
4-026
3-027
2-028
1-029

BROADWAY ST.
17-031
15-032
14-033
13-034
12-035
11-036
10-037
9-038
8-039
7-040
6-041
5-042
4-043
3-044
2-045
1-046

101
101
037 59A
045 35A
046 08A 98.27
044 37.7
043 137.58
042 131.61
041 126
039 51.42
038 96
036 87.97
035 82.47
034 76.56
033 195.21
032 177.58
031 188.79
030 173.7
029 167.3
028 168.84
027 160.5
026 183.78
025 165.9
024 160.5
023 160.5
022 160.5
021 160.5
020 160.5
019 160.5
018 160.5
017 160.5
016 160.5
015 160.5
014 160.5