

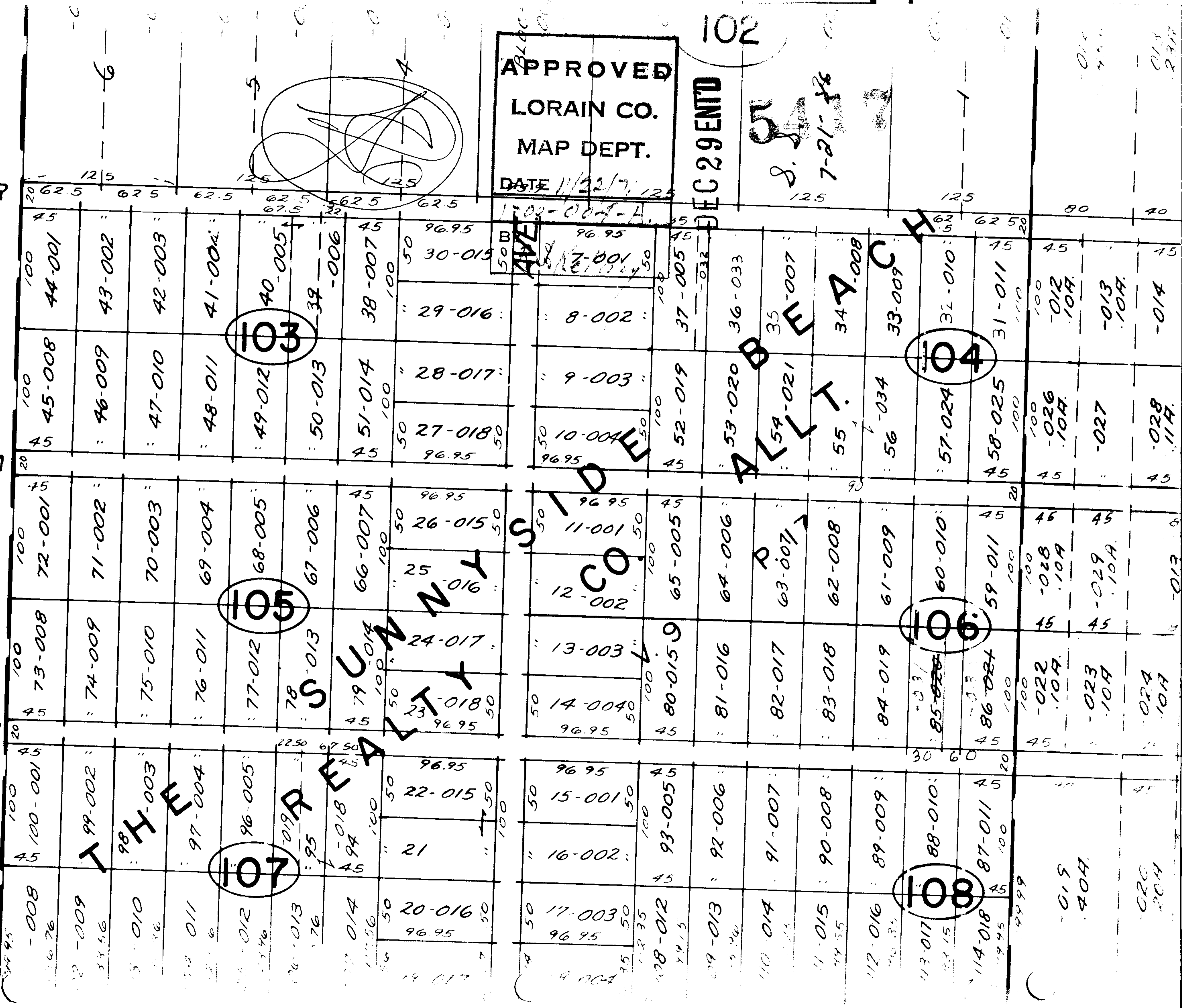
5417

SE WATER

1047.80.
965.8

ELYRIA

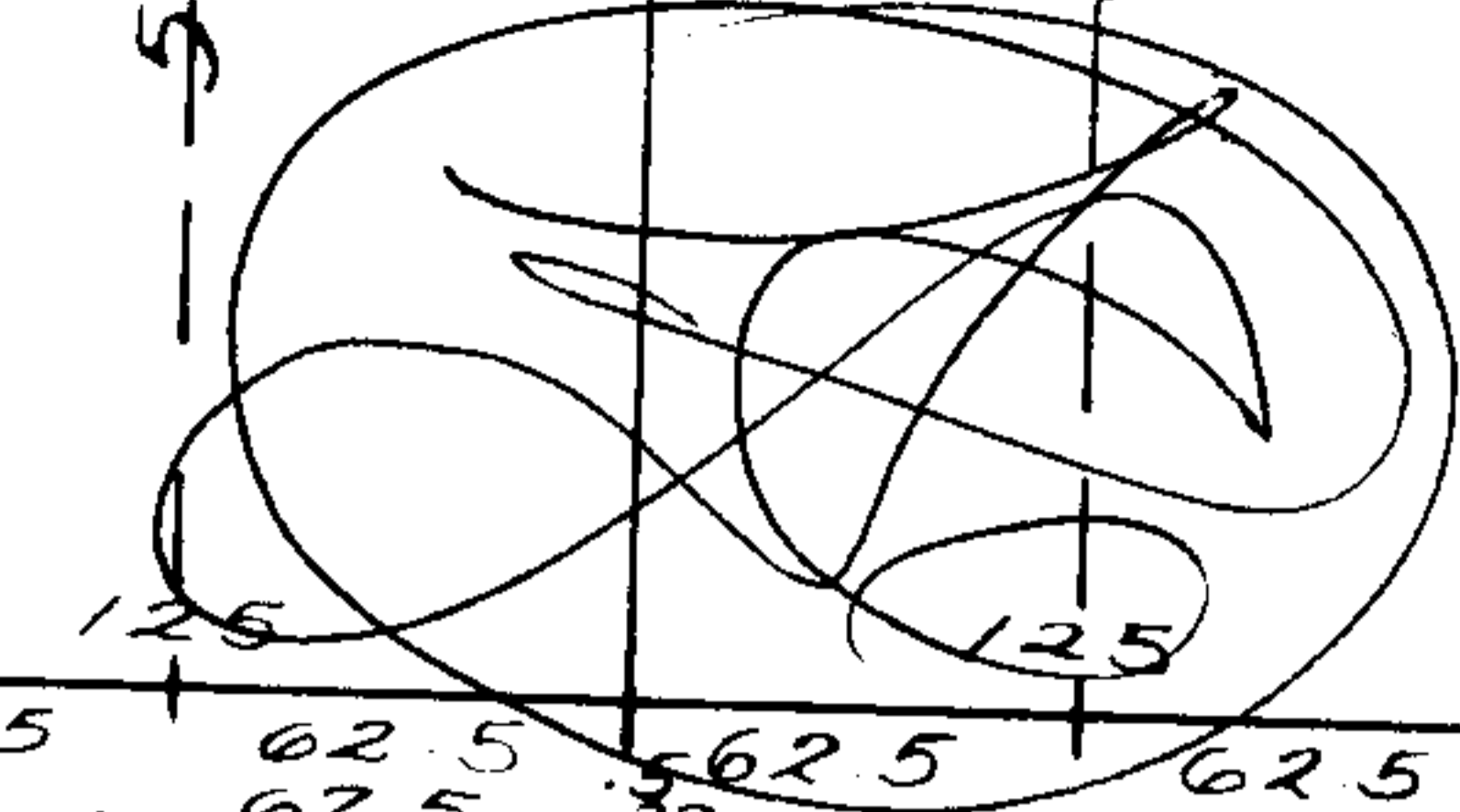
LORAIN



APPROVED
 LORAIN CO.
 MAP DEPT.
 DATE 11/22/71

DEC 29 1971

J. S. [Signature]
7-21-78



103

104

105

106

107

108

014
013
234

80 40

45 45

45 45

45 45

45 45

45 45

45 45

45 45