

5351

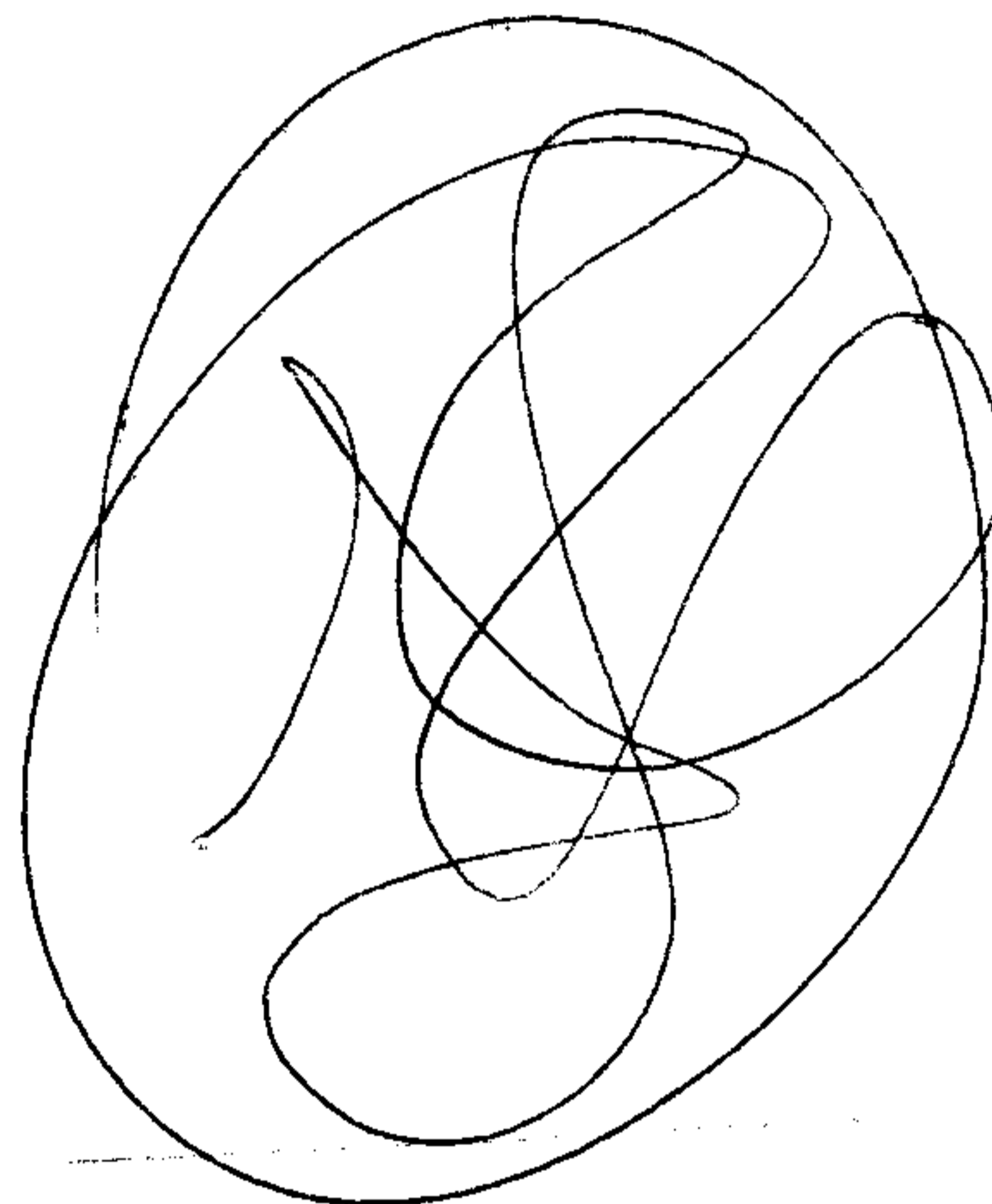
NOV 22 ENT'D

-042  
Pt. -002

Pt. 28.64 F.  
26.38

352.20  
151.11  
201.09

APPROVED  
LORAIN CO.  
MAP DEPT.  
DATE  
7-00-020-A  
BY  
R. J. Kelling



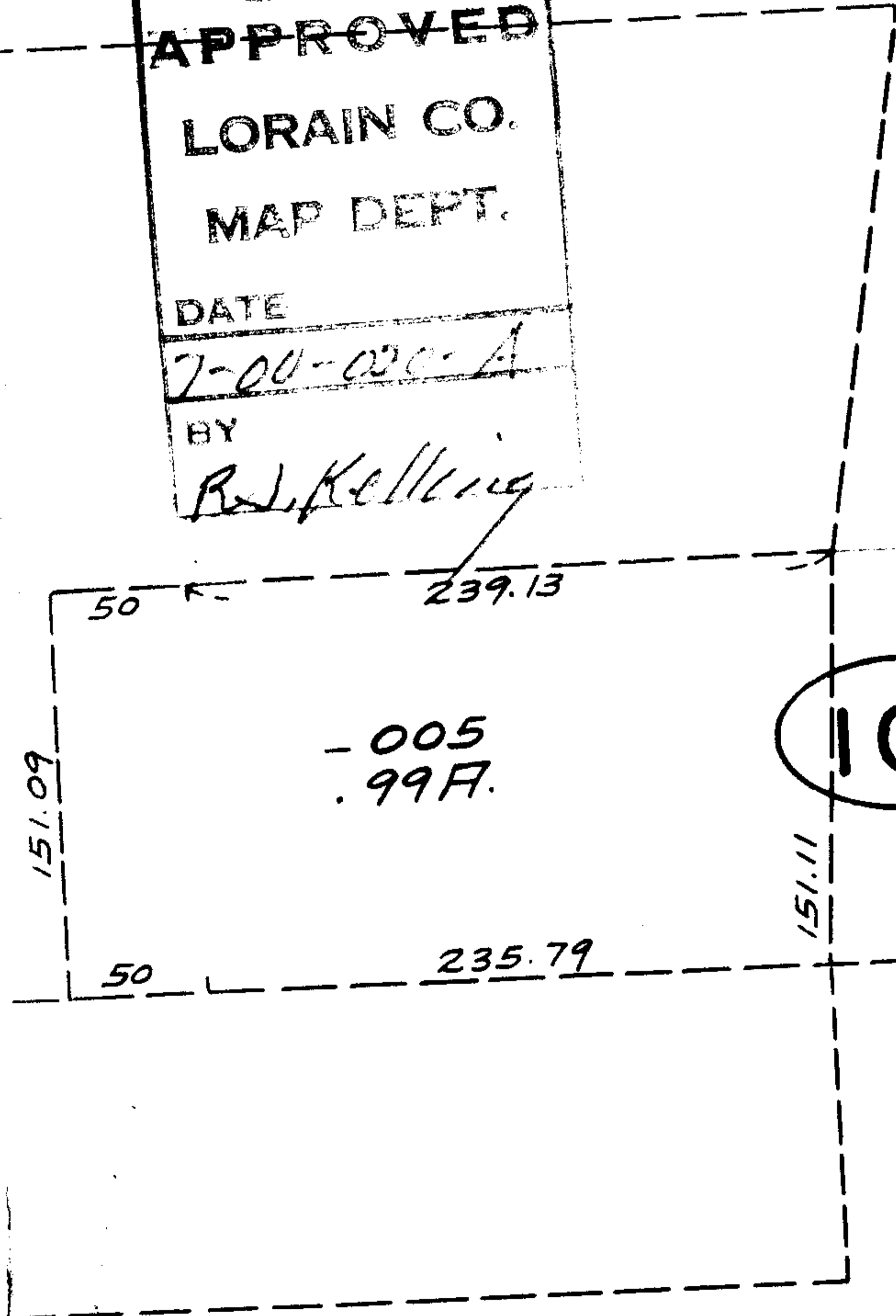
N. 88° 21' E.

590  
590.6

|        |           |          |
|--------|-----------|----------|
| 116.04 | 13-001    | 40       |
| 116    | -002      | 25.35    |
|        | -003      | "        |
|        | -004      | "        |
|        | -005      | "        |
| 8      | -006      | "        |
|        | 108       | "        |
|        | -008      | "        |
|        | -009      | KK T. S. |
|        | -010      | GH       |
| 3      | -011      | G        |
|        | -012      | E        |
| 1      | -013      | I        |
| 40     | DRAKE ST. |          |
| 116    | 32-001    | 25       |
|        | -002      | "        |
|        | -003      | "        |
|        | -004      | "        |
|        | -005      | "        |
| 2      | 006       | "        |
|        | -007      | 23       |
|        | 008       | 23       |

AVE.

SEE 7-00-020-B



101

-041

2.26 F.

651.22

90° 42'

47 98-81-L

5351