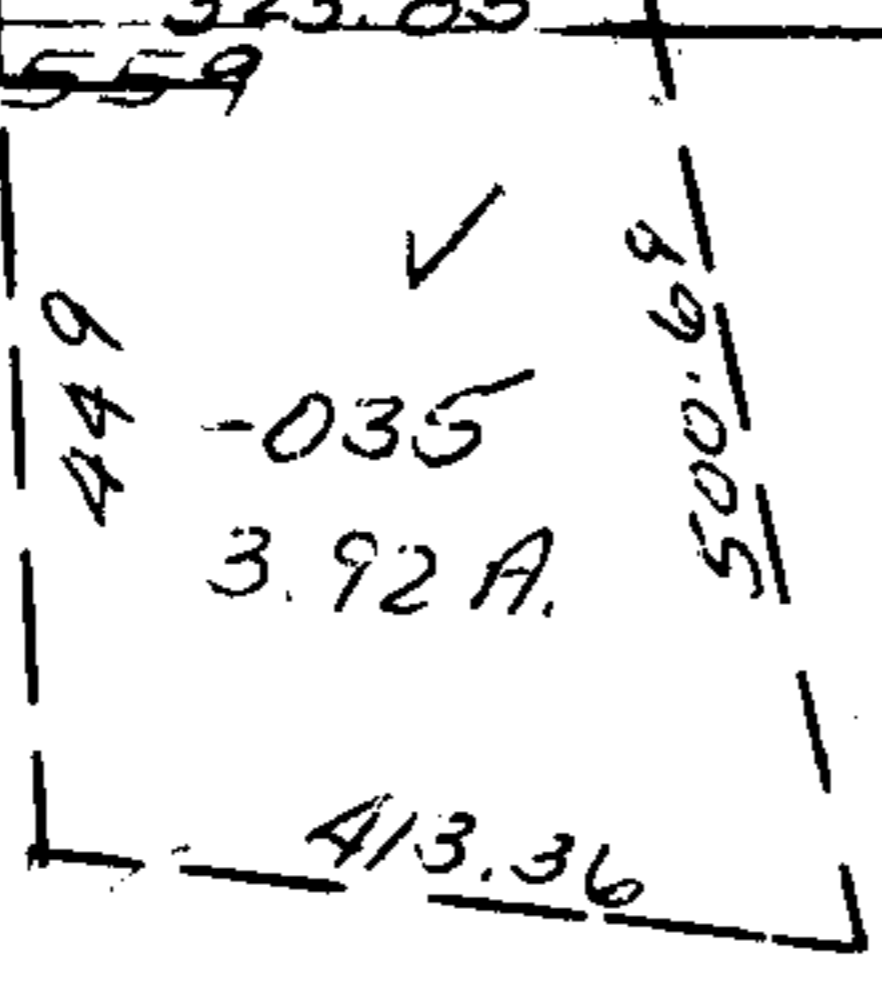


5339

5339

-003  
45.00A

1894.20  
1890.9



-036  
~~007~~  
35.83A  
~~32.91A~~  
3191

502

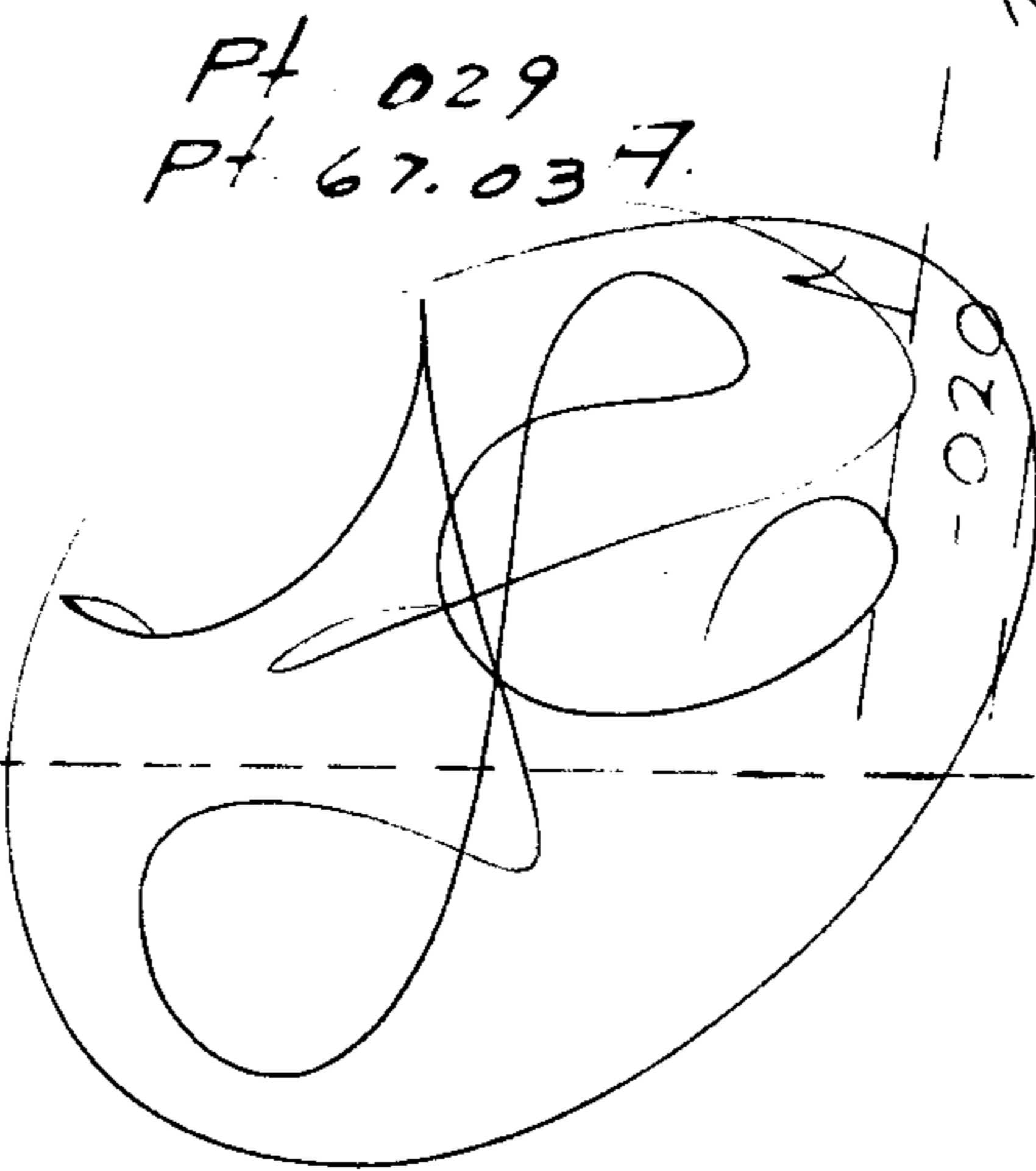
-001  
7.70A

502

-002  
8.44A

502  
1.30A

1287  
502  
39A



Pt. 029  
Pt. 67.037

Pt. -032  
Pt. 43.74 A

29

5339

APPROVED
LORAIN CO.
MAP DEPT.
DATE 10-27-71
18B
BY LWH

NOV 23 1971  
D. S. 186  
7-29  
SELL

18B

5339  
5339