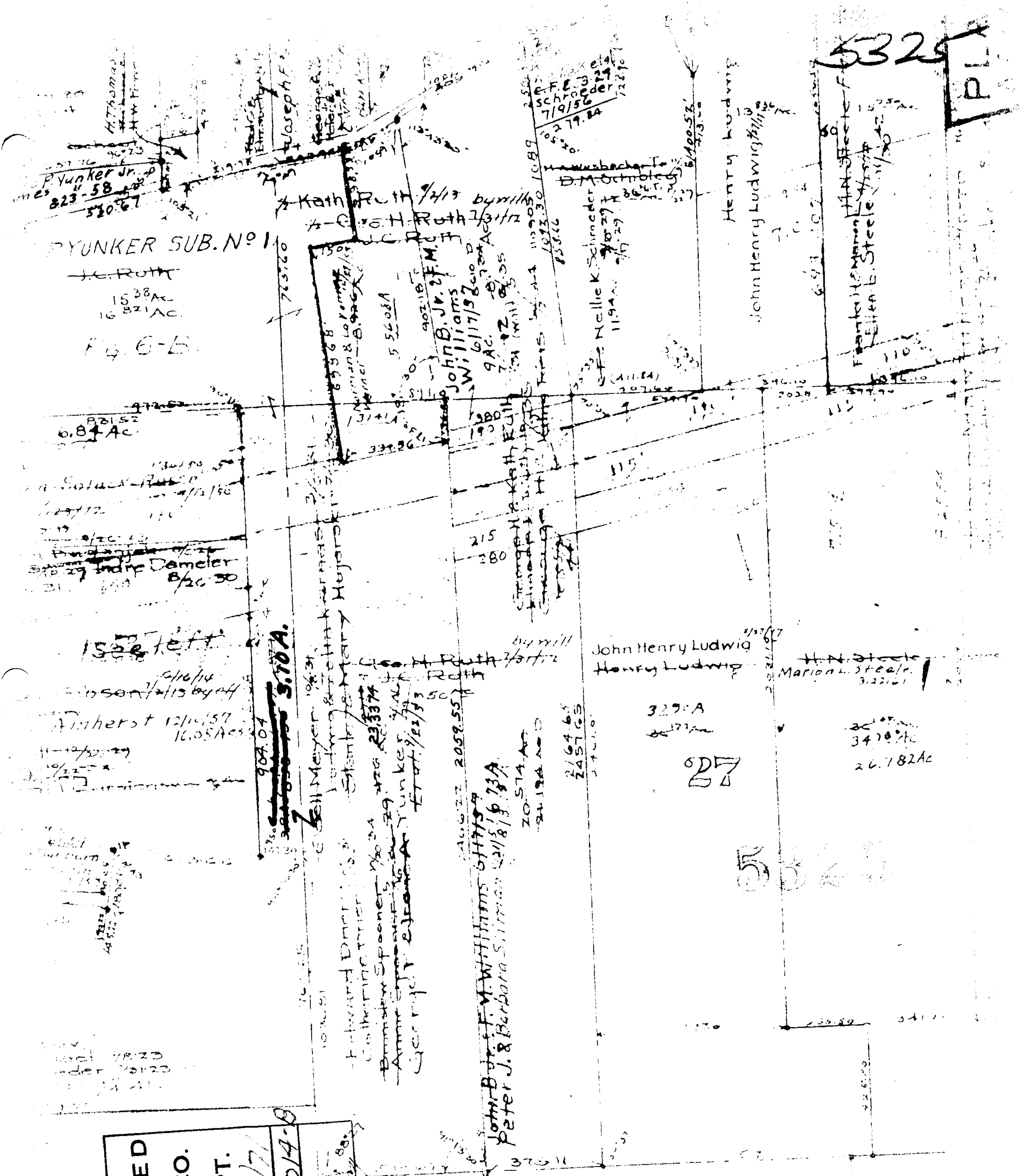


5325

PL



YUNKER SUB. NO 1

J.C. ROTH
15.38 AC
16.821 AC

Fig. E-B

6.84 AC

Indre Demeler
8/20/30

1500 left

Amherst 12/14/57
16.05 AC

909.04
3000000 3.70A

John B. Williams
6/17/52
9 AC
7/12/55
John B. Williams
6/17/52
9 AC
7/12/55

John B. Williams
6/17/52
Peter J. & Barbara Simon
2/18/53

John Henry Ludwig
Henry Ludwig

H.N. Steele
Marion L. Steele
3/22/51

3270A

27

3470 AC

26.782 AC

APPROVED
LORAIN CO.
MAP DEPT.
DATE 10/20/71
S.F. 500-D/A-0
BY [Signature]

Scale 1" = 400'