

665
2.89A.

84772

Chymley Stanley & Mar 006
DV 755- 29 556 1.78A.

895.82

Baker Viola
DV 820- P9 284 -007 1.88A.

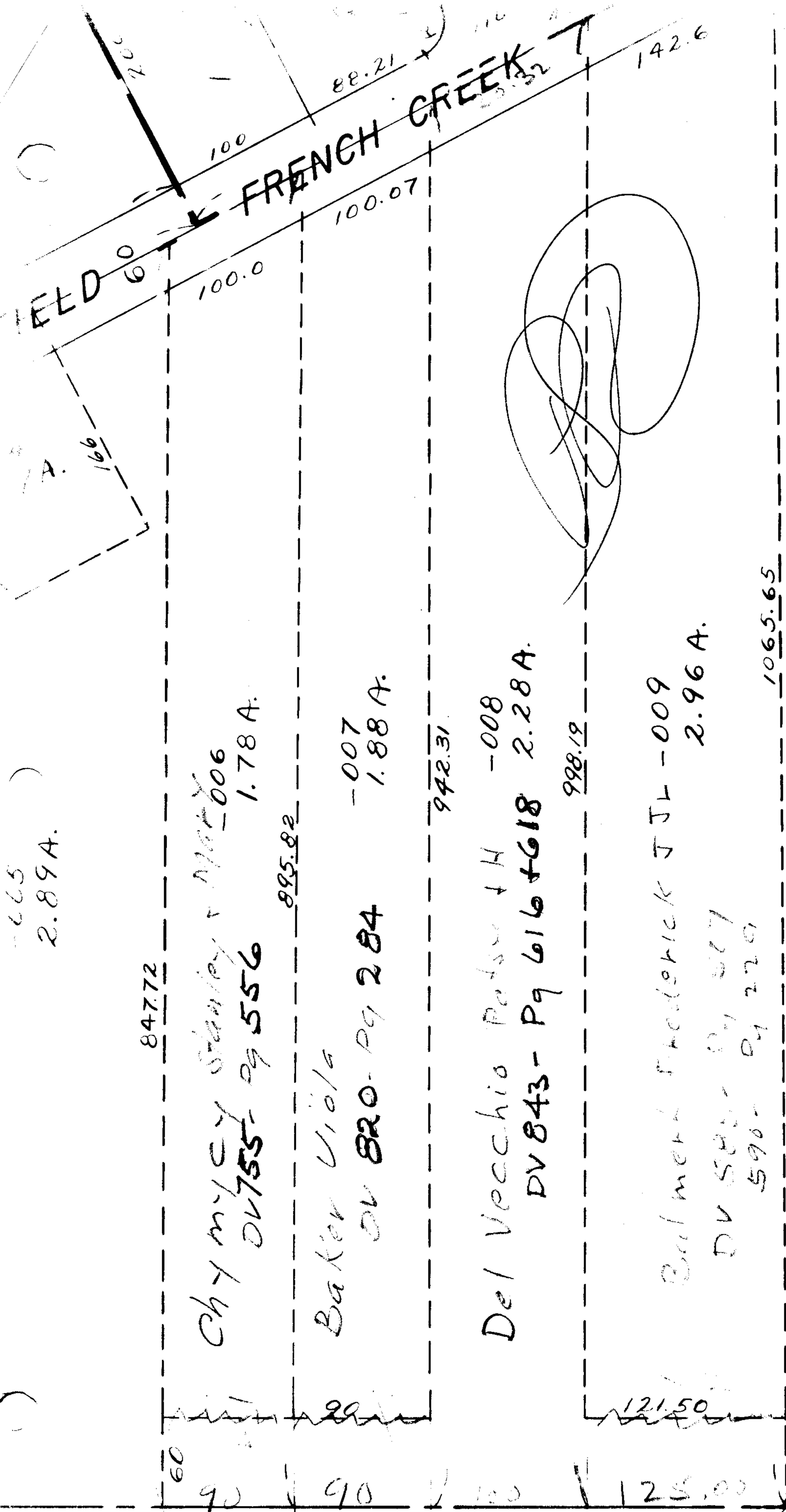
942.31

Del Vecchio Pat & H -008
DV 843- P9 616 + 618 2.28A.

998.19

Bulmer Frederick J JL -009 2.96A.
DV 588- P9 587
590- P9 220

1065.65



#321

103

-014
11.85

6321

APPROVED
LORAIN CO.
MAP DEPT.
DATE 1-17-11
BY [Signature]

Wade Anderson
Dyer
George W. Hall
Lorain Co. H

SEE 4-1