

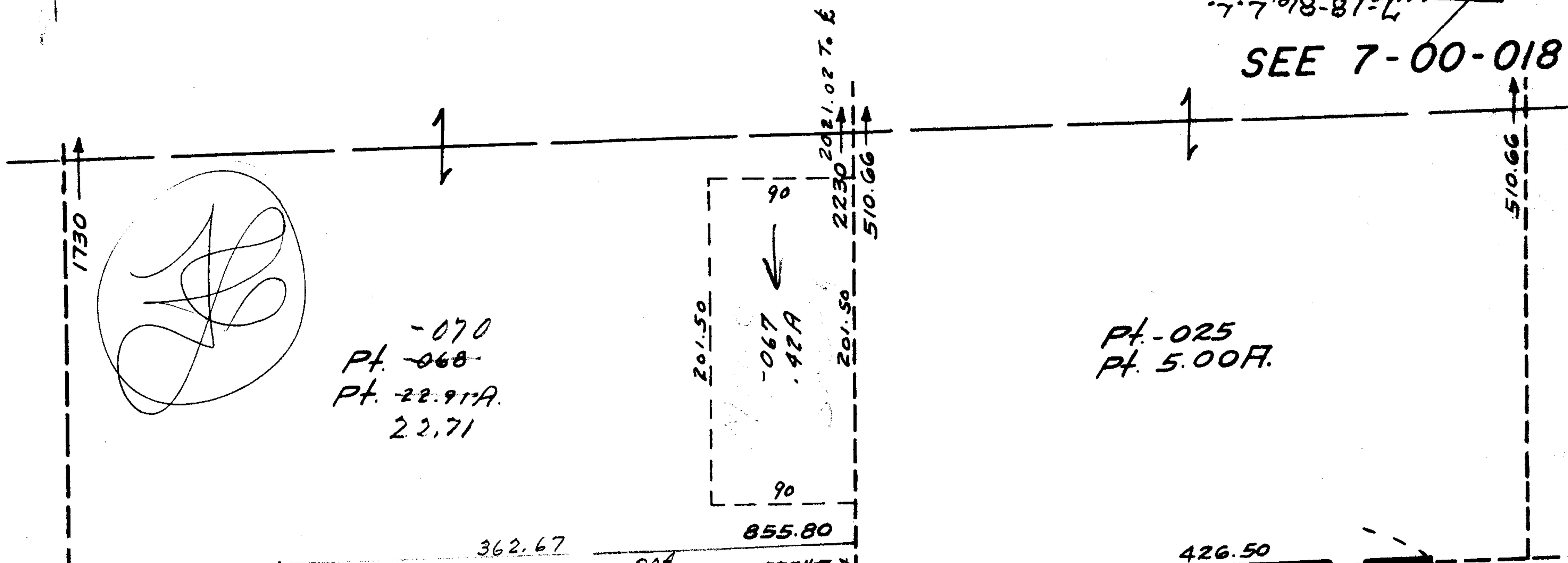
5243

SEP 23 ENTD
5243

APPROVED
LORAIN CO.
MAP DEPT.
DATE 9/2/71
7-00-018-B
BY
B. J. Kelly

788.50
362.67
125.83

SEE 7-00-018-



24	38	52-001	133	5.05	362.67	20A	426.50	13.88	99.36	62-001	99.54	25	38	99.36	40	25	40.15
30	30	-002	40	30	54-001	51-	30	40	51-001	30	61-049	30	40	-002	99.72	25	40.15
"	"	-003	"	"	-002	-095	"	"	-002	"	-050	"	"	99.8	"	"	"
"	"	"	"	"	"	"	"	"	"	"	-051	"	"	100.07	"	"	"