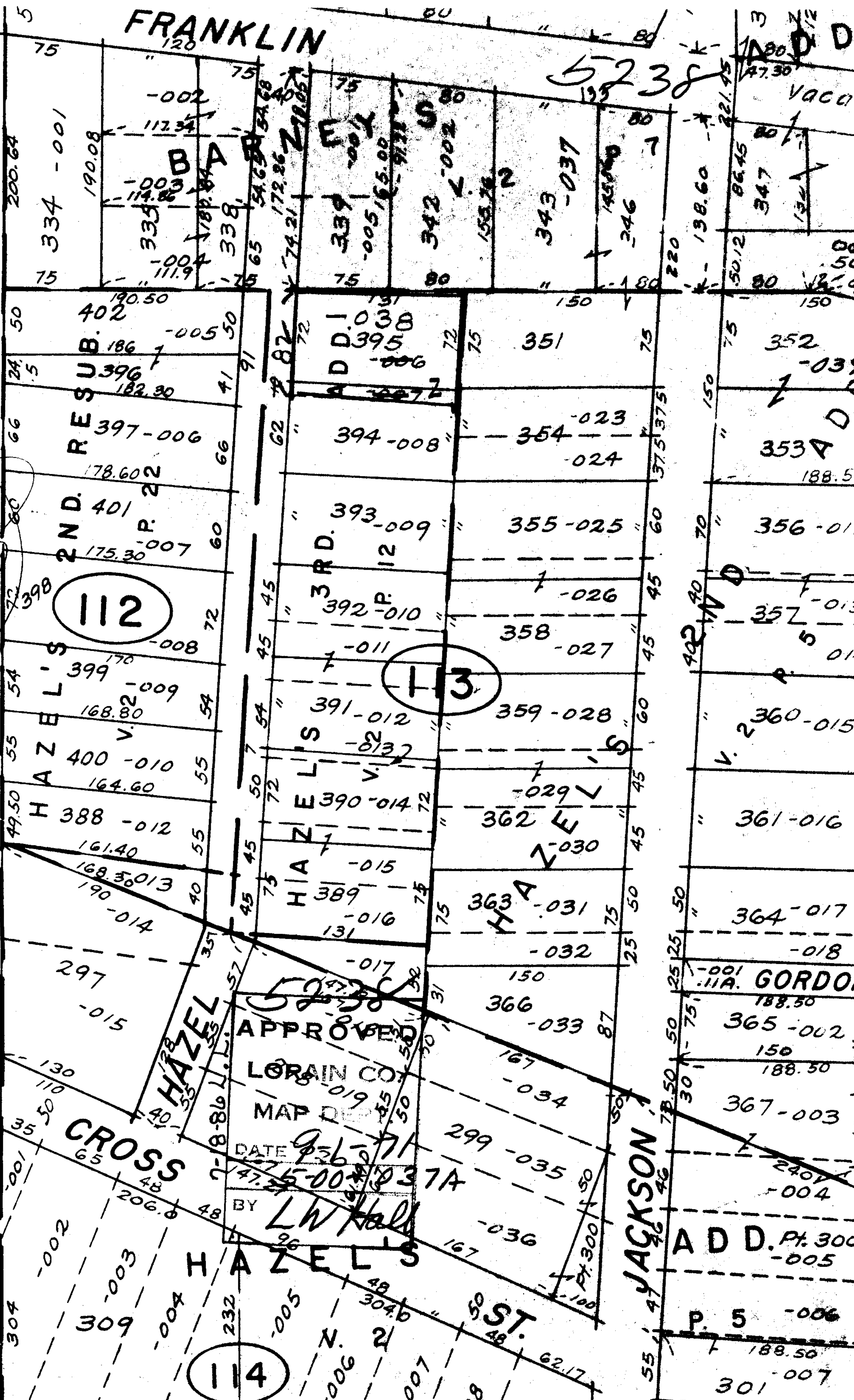


05-00-037-111-001  
only Bldg. on 337, etc.)

# FRANKLIN

5238

ADD  
VAC



SEP 23 ENT'D

5-00-037A

APPROVED

LORAIN CO.

MAP DEPT.

DATE 9-26-71

BY LW Hall

114

113

112

GORDON

ADD. Pt. 300

P. 5

301

HAZEL

JACKSON

ST.

CROSS

HAZEL'S

HAZEL'S

HAZEL'S

HAZEL'S

HAZEL'S

HAZEL'S

HAZEL'S

HAZEL'S

HAZEL'S

HAZEL'S

HAZEL'S

HAZEL'S

HAZEL'S

HAZEL'S

HAZEL'S

HAZEL'S

HAZEL'S

HAZEL'S

HAZEL'S

HAZEL'S

HAZEL'S

HAZEL'S

304

309

334

335

338

339

342

343

346

351

352

353

356

357

358

359

360

361

362

363

366

367

368

369

370

371

372

373

374

375

376

377

378

379

380

381

382

383

384

385

386

387

388

389

390

391

392

393

394

395

396

397

398

399

400

401

402

403

404

405

406

407

408

409

410

411

412

413

414

415

416

417

418

419

420

421

422

423

424

425

426

427

428

429

430

431

432

433

434

435

436

437

438

439

440

441

442

443

444

445

446

447

448

449

450

451

452

453

454

455

456

457

458

459

460

461

462

463

464

465

466

467

468

469

470

471

472

473

474

475

476

477

478

479

480

481

482

483

484

485

486

487

488

489

490

491

492

493

494

495

496

497

498

499

500

501

502

503

504

505

506

507

508

509

510

511

512

513

514

515

516

517

518

519

520

521

522

523

524

525

526

527

528

529

530

531

532

533

534

535

536

537

538

539

540

541

542

543

544

545

546

547

548

549

550

551

552

553

554

555

556

557

558

559

560

561

562

563

564

565

566

567

568

569

570

571

572

573

574

575

576

577

578

579

580

581

582

583

584

585

586

587

588

589

590

591

592

593

594

595

596

597

598

599

600

601