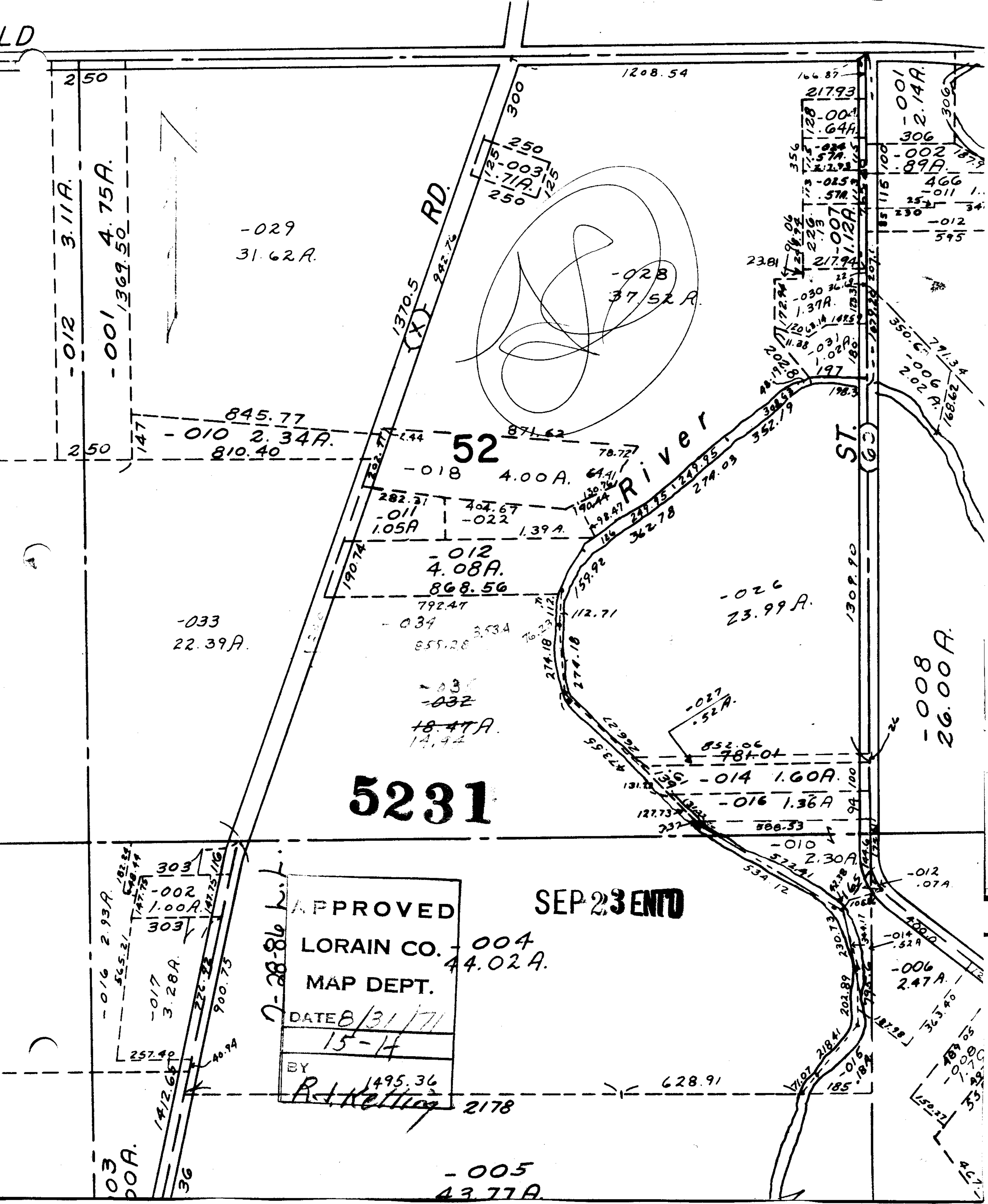


5231

LD



-029
31.62A.

52

-018 4.00A.

-012
4.08A.
868.56

-033
22.39A.

-034 3.53A
855.28

-032
18.47A.
14.94

-026
23.99A.

5231

SEP 23 1917

APPROVED
LORAIN CO. MAP DEPT.

-004
4.02A.

DATE 8/31/17

15-4

BY R. A. Ketting

-005
43.77A.

-008
26.00A.

-001
2.14A.

-002
1.87A.

-011
1.34A.

-012
5.95A.

-006
2.02A.

-006
2.47A.

-012
.07A.

-014
.52A.

-006
2.47A.

-014
.52A.

-006
2.47A.

-012
.07A.

-014
.52A.

-006
2.47A.

-014
.52A.

-006
2.47A.

-014
.52A.