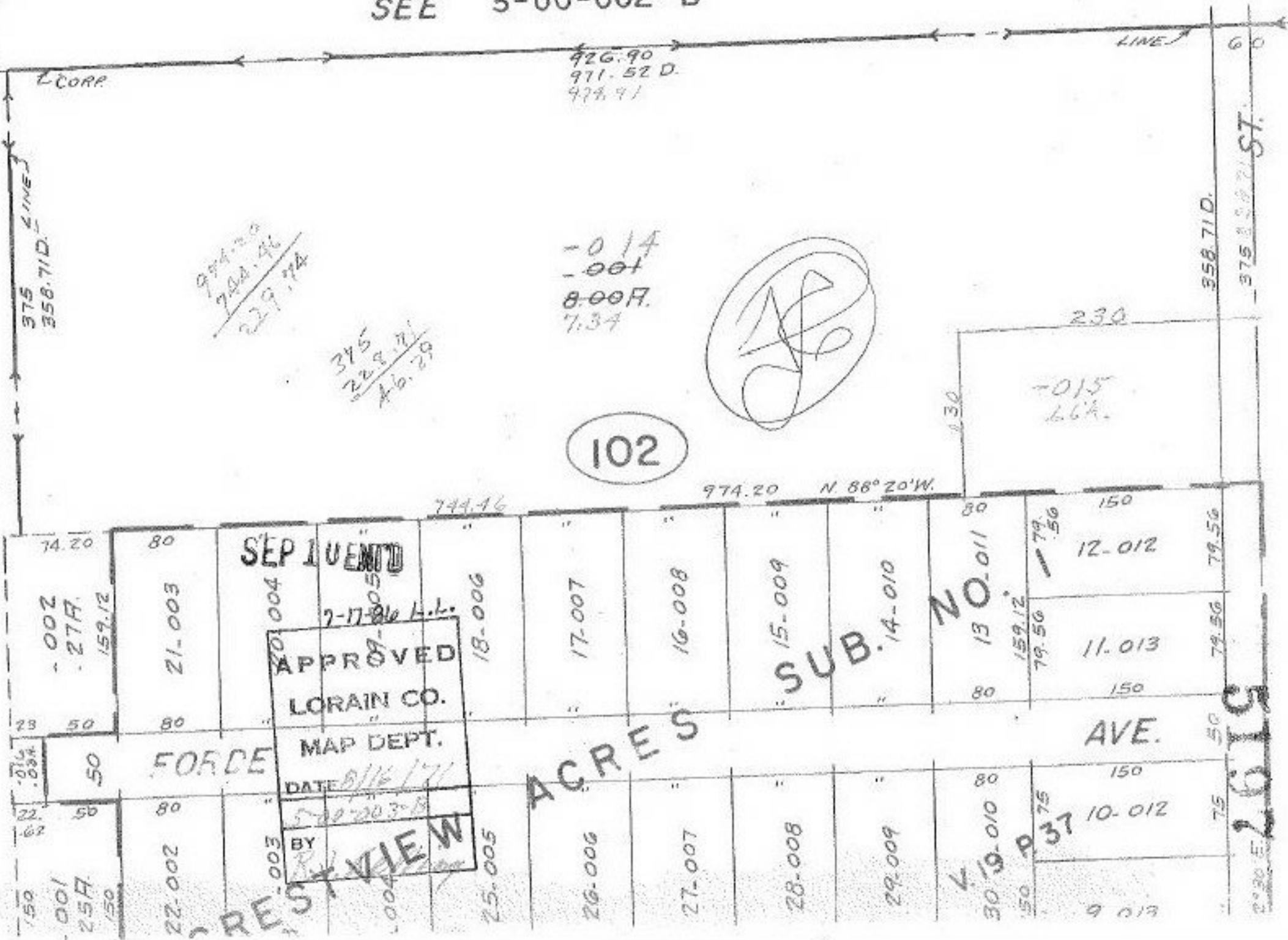


SEE 5-00-002-B



102

L.S.

APPROVED
LORAIN CO.
MAP DEPT.
DATE 8/16/71
BY [Signature]

994.20
700.46
229.74

375
228.71
46.29

-0.14
-0.01
8.00 R.
7.34

-0.15
66A.

974.20 N. 88° 20' W.

744.46

SEP 1 UENTD

FORDE

REST VIEW

ACRES

SUB. 14-010

NO. 011

AVE.

2030 E 2619 ST.

60

358.71 D.

375 358.71 D. ST.

230

130

80

79.50

150

12-012

79.50

11-013

159.12
79.50

150

150

10-012

150
79.37

9-013

80

30-19-010

150

75

50

75

L CORR

375
358.71 D. LINES

426.90
911.52 D.
478.91

LINES

74.20

80

002
27A.
159.12

21-003

004

7-17-86 L.L.

18-006

17-007

16-008

15-009

14-010

80

79.50

150

29

50

80

001
25A.
150

22-002

003

004

25-005

26-006

27-007

28-008

29-009

80

79.37

150

22

50

80

001
25A.
150

22-002

003

004

25-005

26-006

27-007

28-008

29-009

80

79.37

150

150

50

80

001
25A.
150

22-002

003

004

25-005

26-006

27-007

28-008

29-009

80

79.37

150

50

75

75