

DV629-99323

16.04 x 560.70 = 9442.18
9442.18 ÷ 43560 = .21 AC
87.09 x 560 = 48770.40
48770.40 ÷ 43560 = 1.12 AC

5157
APPROVED
LORAIN CO.
MAP DEPT. Pt.-001
DATE 8-4-71 PL. 20.45F
6-66
BY L. Hall

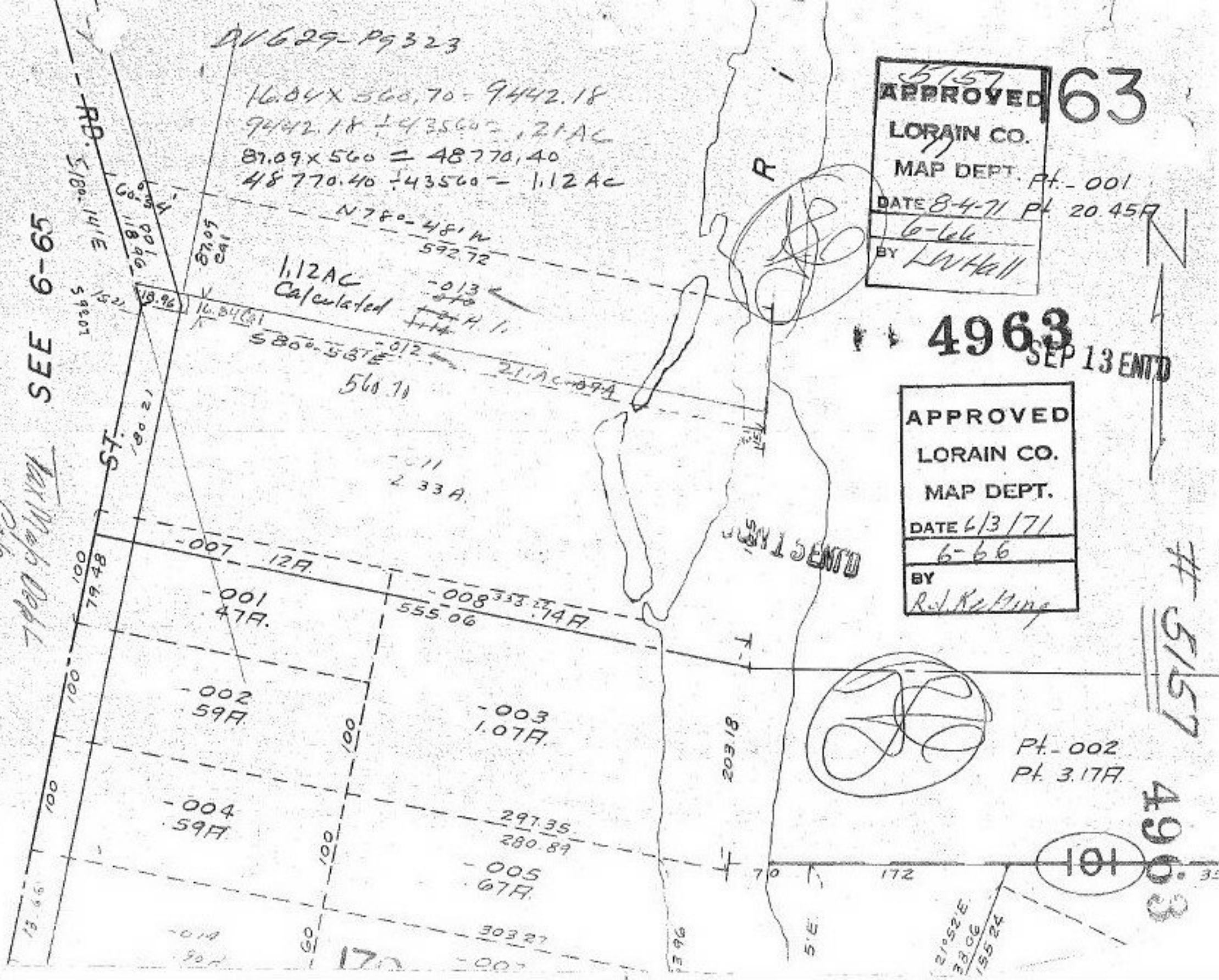
63

4963
SEP 13 ENTD

APPROVED
LORAIN CO.
MAP DEPT.
DATE 6/3/71
6-66
BY R. Keating

SEE 6-65

Max Maps Dept
Cathy



5157

4963

101

Pt.-002
Pt. 3.17A

21°52'E
38.06
155.24