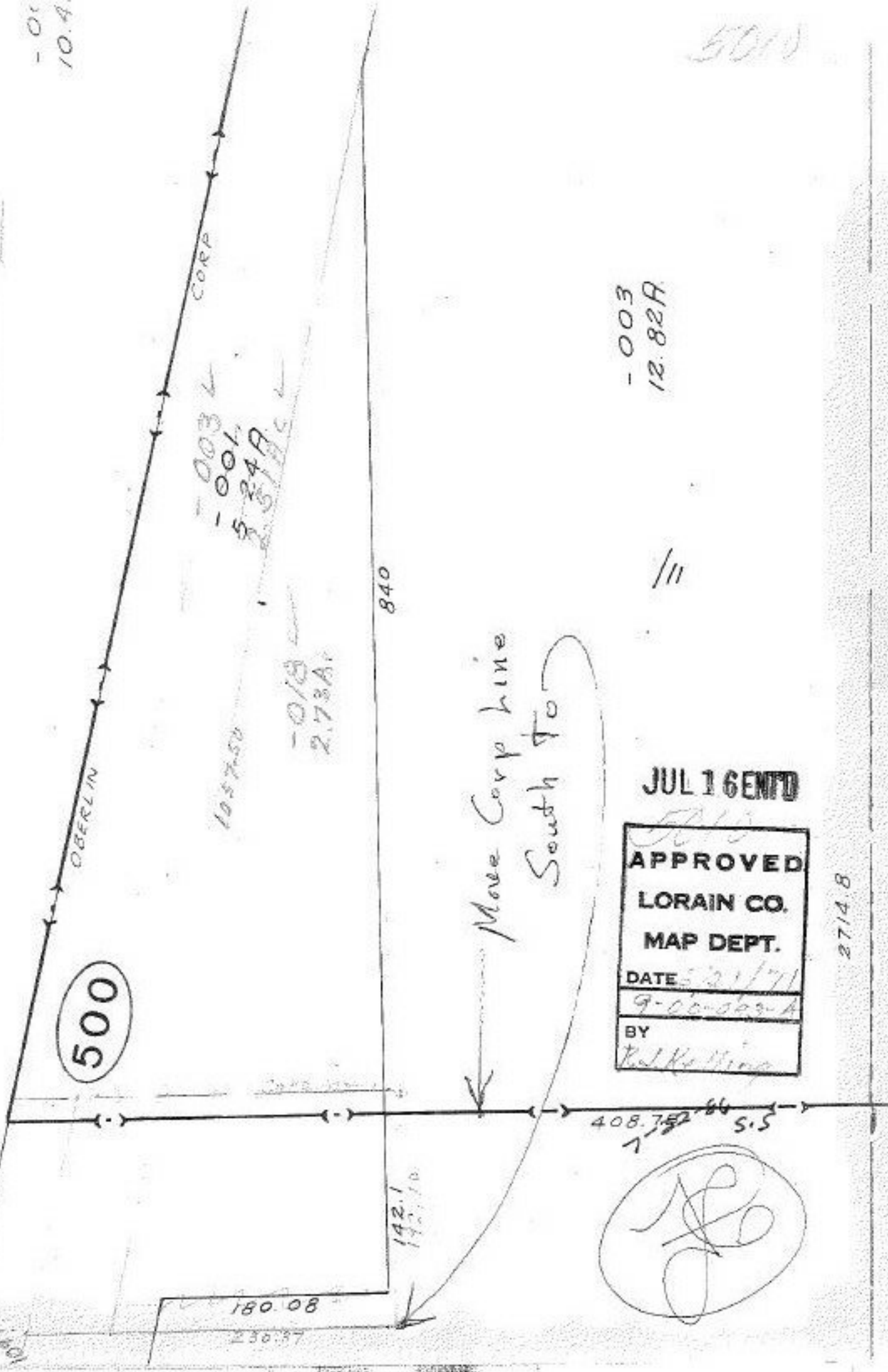


-001  
10.4

5010



-003 L  
-001  
5.24 A

-018  
2.73 A

-003  
12.82 A

JUL 16 1971

APPROVED  
 LORAIN CO.  
 MAP DEPT.  
 DATE 5/21/71  
 9-00-000-A  
 BY  
 Paul Kelling

2714.8

*(Handwritten signature in a circle)*