

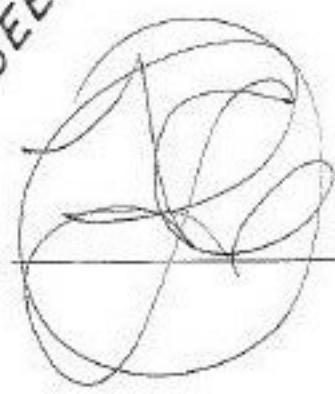
WEBSTER

APPROVED  
 LORAIN CO.  
 MAP DEPT.  
 DATE 6/17/71  
 19-A  
 BY  
 R. L. [Signature]

SEE 19-06-118-A  
 S. S. 8-4-86

SEE 19-06-118-B

118



SEE 19-06-118-A  
 S. S. 8-4-86

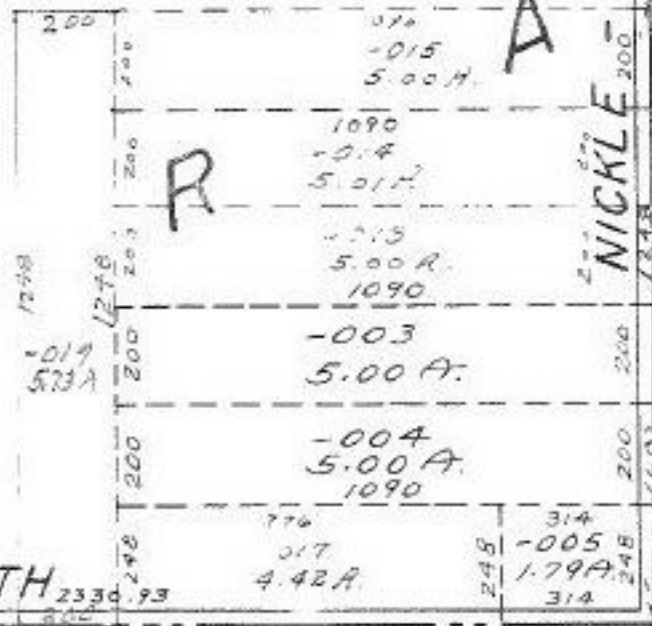
RD. DIAGONAL

RD. NICKLE PLATE

-020  
 -018  
 88-50A  
 82.77

117

T



PECK - WADSWORTH

1122

90-20

205  
 N-002  
 4  
 1.51A  
 265

RD. 709.67  
 547.22  
 543.23