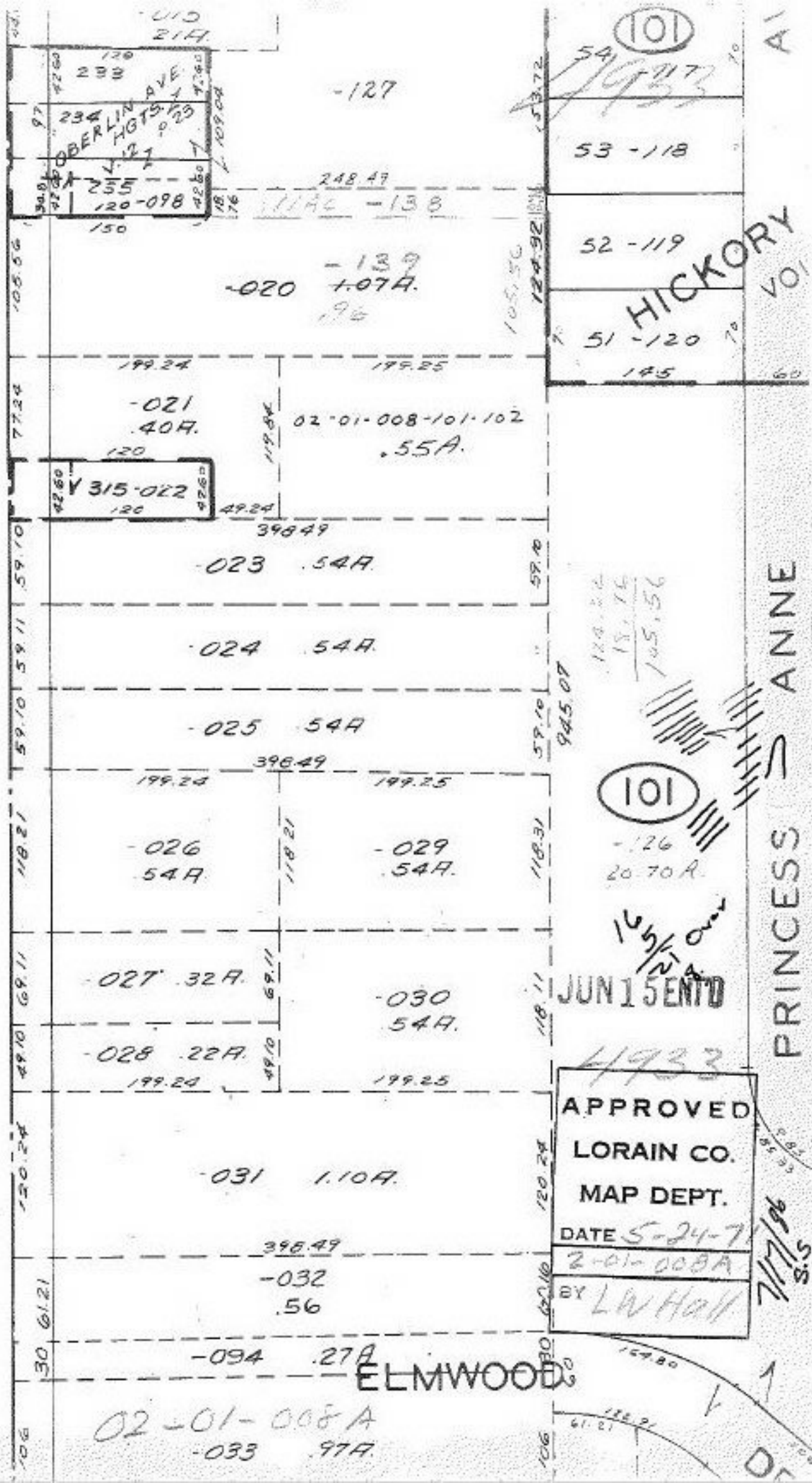


SEE 2-02-006-B



Handwritten calculations and notes in the left margin:
1107
11
96
1876
248.49
416 41.67 69 ft
43560
= 107 A
11 AC



APPROVED
LORAIN CO.
MAP DEPT.
DATE 5-24-71
2-01-008A
BY LW Hall

JUN 15 1971

101

124.24
18.76
145.56

HICKORY
PRINCESS ANNE
ELMWOOD