

4892

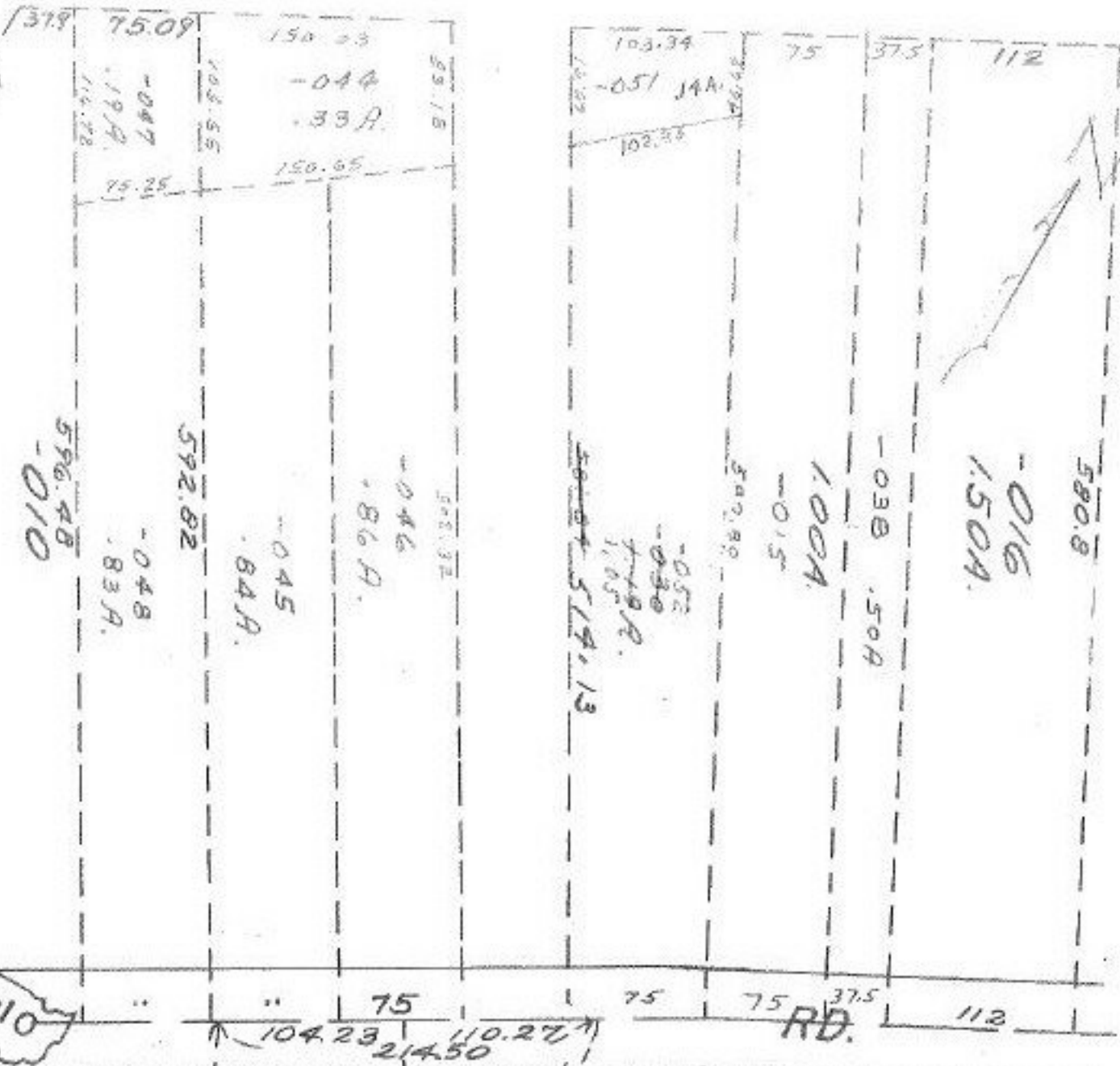
APPROVED  
 LORAIN CO.  
 MAP DEPT.  
 DATE 5/6/71  
 17-00-289-A  
 BY  
 R. V. Williams



4892

CLINTON

1552



CLEVELAND

RD.

100  
 536.6  
 100  
 107  
 596.48  
 101  
 592.82  
 102  
 103  
 104  
 105  
 106  
 107  
 108  
 109  
 110  
 111  
 112

75.09  
 150.03  
 103.55  
 -044  
 .33A  
 150.65

103.34  
 -051 J4A  
 102.33

590.8  
 -016  
 150A

-030 .50A  
 1.00A  
 -015

581.84  
 67.71  
 514.13

104.23  
 214.50  
 110.27

18765  
 920  
 481.54

295.72

100  
 101  
 102  
 103  
 104  
 105  
 106  
 107  
 108  
 109  
 110  
 111  
 112

100  
 101  
 102  
 103  
 104  
 105  
 106  
 107  
 108  
 109  
 110  
 111  
 112

100  
 101  
 102  
 103  
 104  
 105  
 106  
 107  
 108  
 109  
 110  
 111  
 112