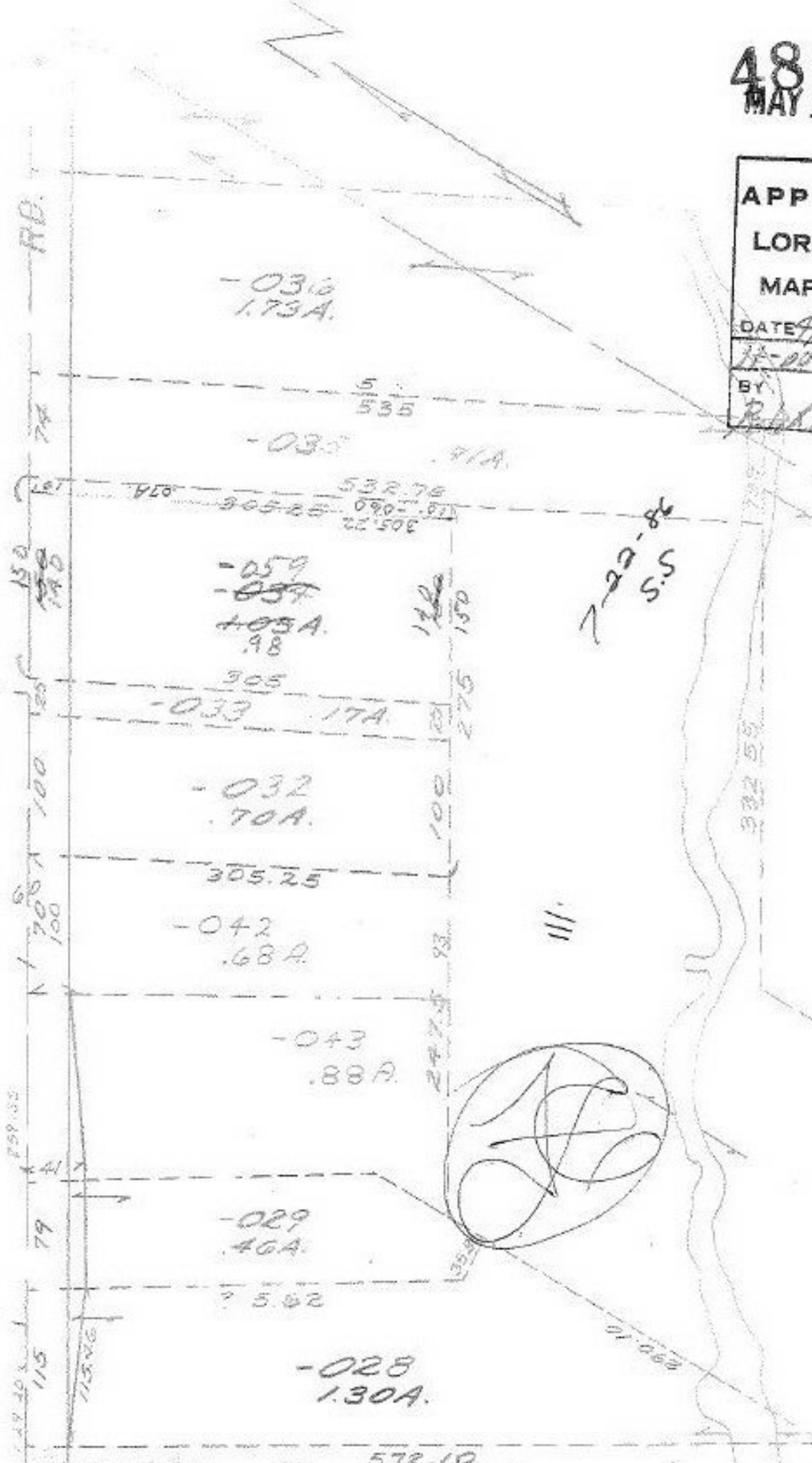


4865
MAY 11 ENTD

APPROVED
LORAIN CO.
MAP DEPT.
DATE 4/26/71
14-00-093-B
BY
R. Kelling



-051
.55A

-031
173A.

-030
71A.

-059
~~-059~~
405A.
98

-033
17A.

-032
70A.

-042
.68A.

-043
.88A.

-029
.46A.

-028
130A.

7-22-8
S.S.

41971

051
031