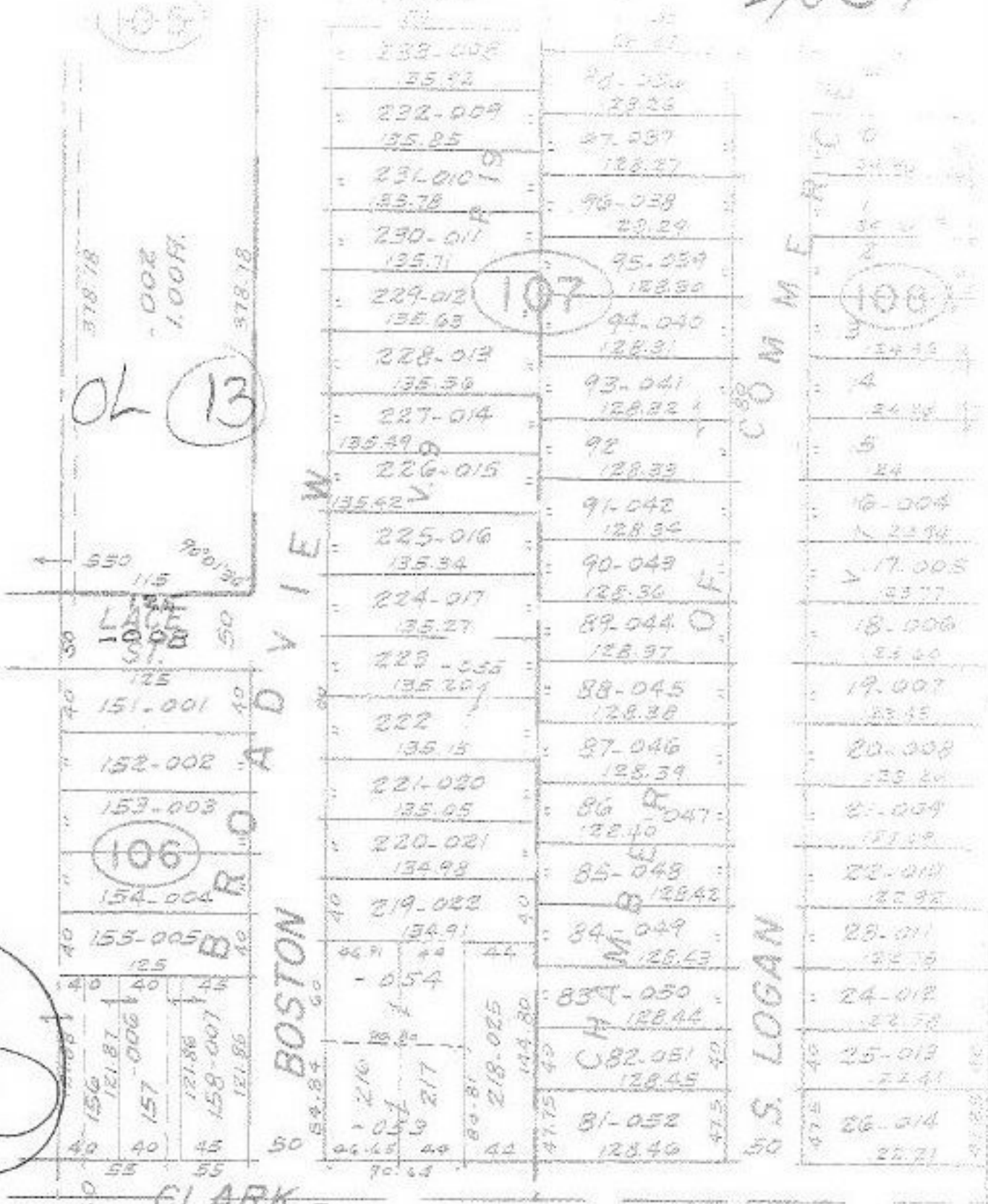


4857

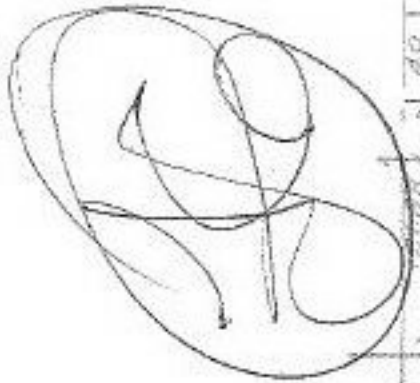


OL 13

106

107

108



4857
 APPROVED
 LORAIN CO. MAY 7 1971
 MAP DEPT.
 DATE 4-19-71
 6-105
 BY L.W. Hall

SEE 6-1
 EAST
 NE 1/4
 SE 1/4

ELYRIA
 SCALE: 1" = 100'

6-105