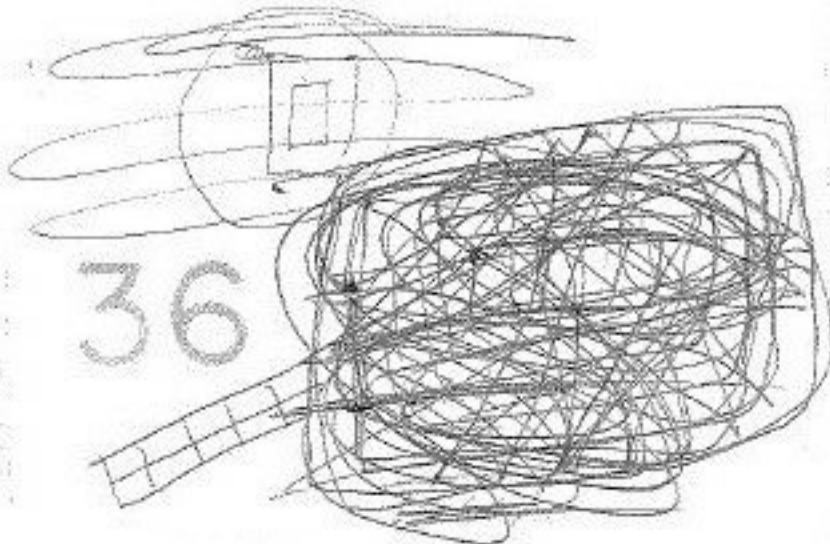


4814

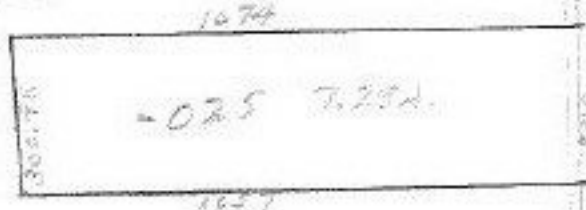
203
9.850

RD. 2534



36

-026
59.61A



97E
200-
2.23A

JUN 2ENTD

APPROVED
LORAIN CO.
MAP DEPT.
DATE 4/2/71
1-F
BY
R. J. Kelling

4814

A handwritten signature or set of initials enclosed within a hand-drawn circle.

002
78.53A

SUNNYSIDE

45

200
2.05A
4.23A