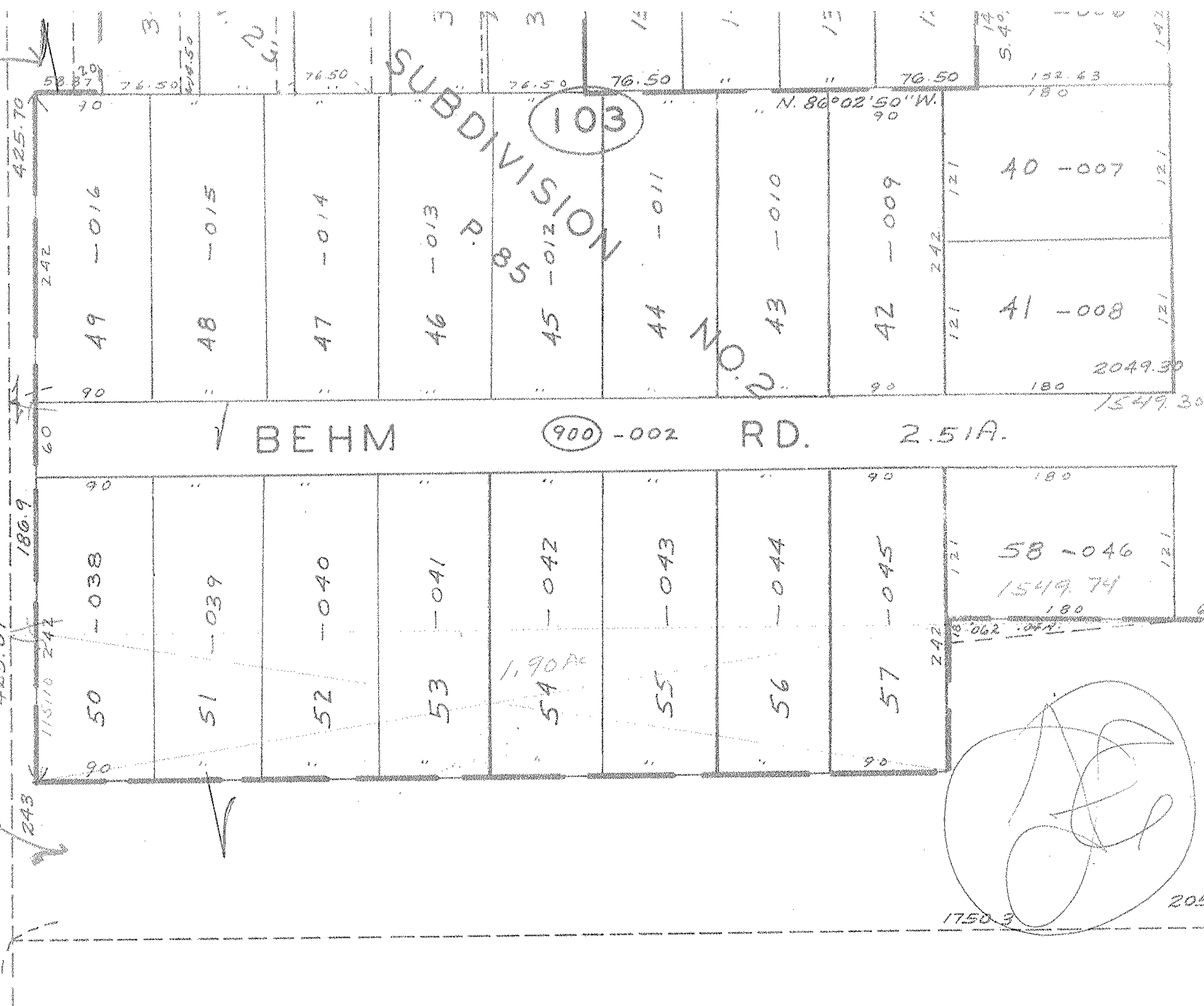


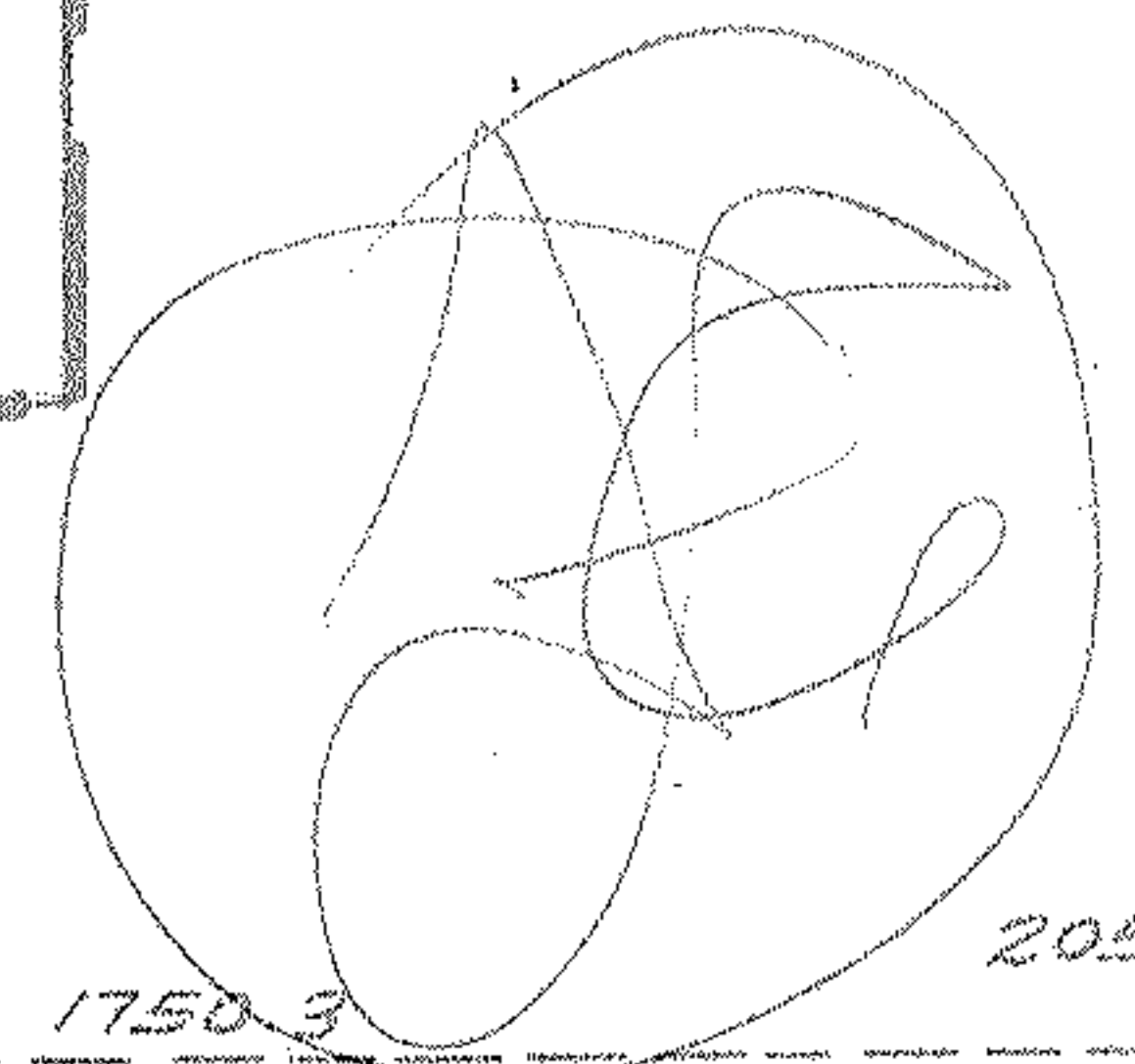
SUBDIVISION 103

BEHM RD. 2.51A. (900)-002

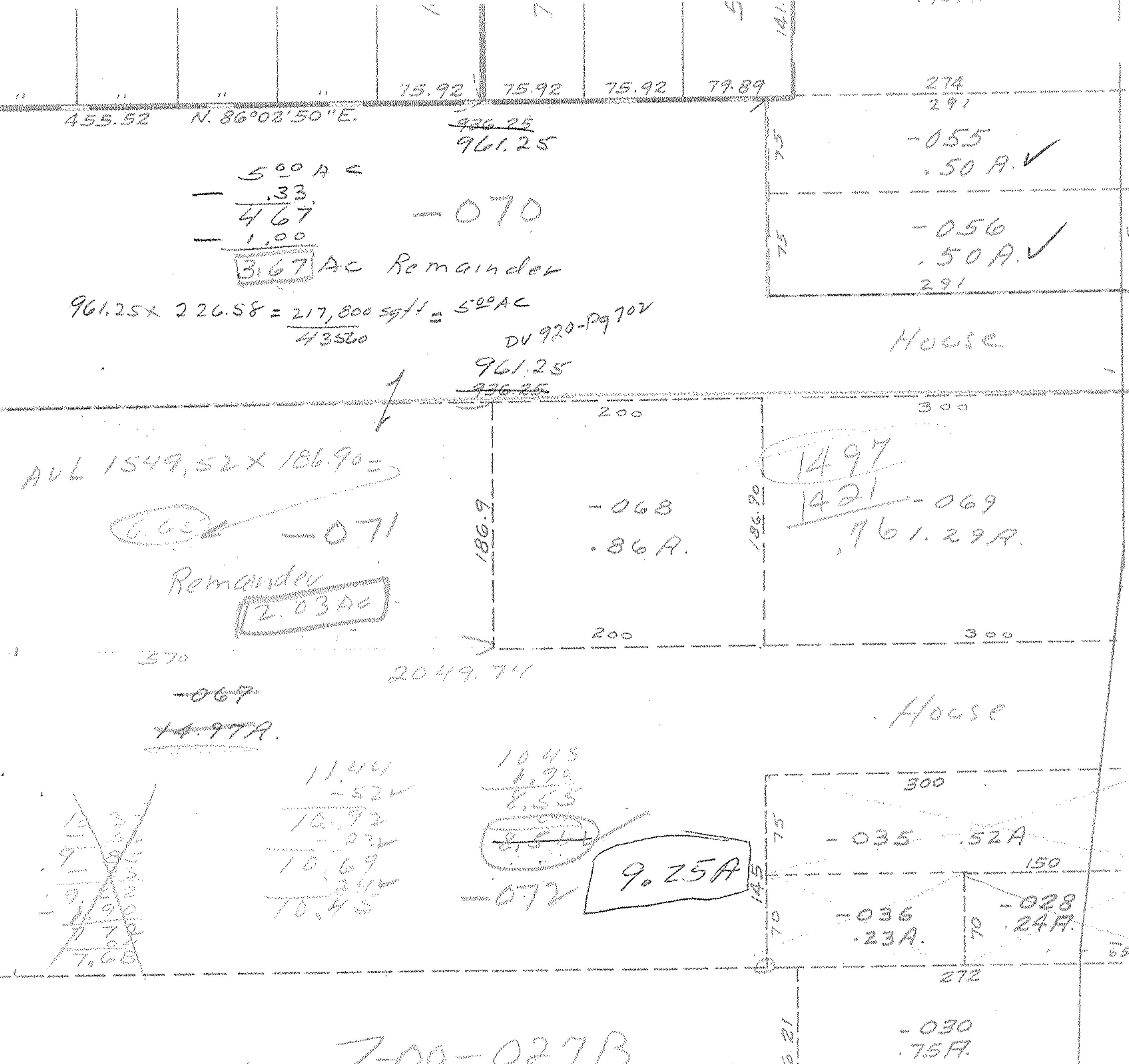


APR 19 1900

APPROVED
LORAIN CO.
MAP DEPT.
DATE 3-31
7-00-027B
BY L. W. Hall



101



500 A
- .33
467
- 1.00
3.67 AC Remainder

$961.25 \times 226.58 = 217,800 \text{ sq ft} = 500 \text{ AC}$
 $\frac{43520}{43520}$

AVL 1549.52 x 186.90 =

6.65
Remainder
2.03 AC

11.44
- .52
10.92
- .24
10.69
- .24
10.45

10.45
- 1.20
8.55
- 8.55
9.25 A

7-00-027B

SEE 7-00-022-A

6087