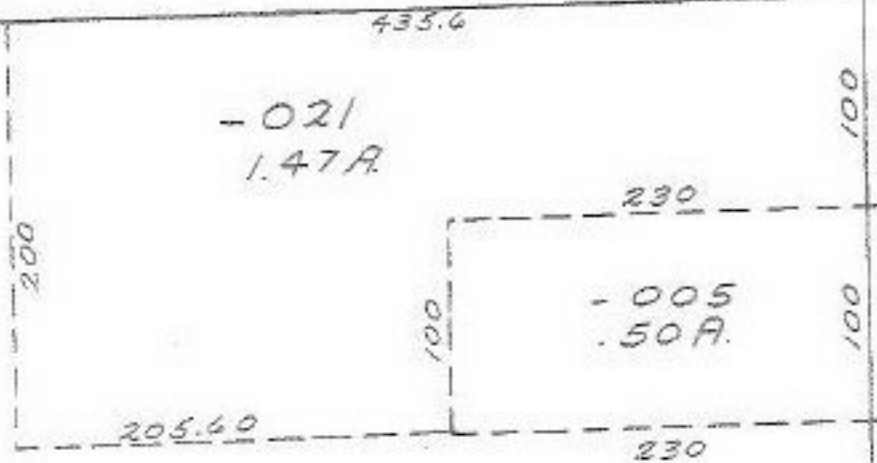


4772

2/772
 APPROVED
 LORAIN CO.
 MAP DEPT.
 DATE 3/18/71
 12-00-056-B
 BY
 R. J. Kelling

APR 16 1971

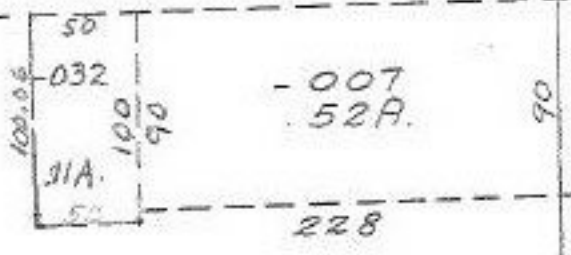
Pt. - 020
Pt. 25.03A.



4772



Lot 14



Pt. - 033
Pt. - 006
Pt. 26.48A.
26.37

SEE 12-00-045-A