

4616

PL 23-27-1000-103 004

PL 128017

4616

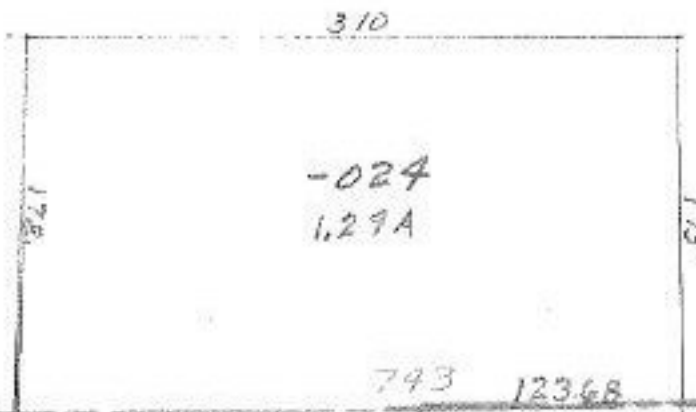
FEB 18 ENT'D
 APPROVED
 LORAIN CO.
 MAP DEPT.
 DATE 1/28/71
 6-15
 BY
 R. J. Kelling

N

-025
10.34

5

305



275.88
195.98
79.90

(Handwritten signature/initials)

301

CAMPAGNA

CULA

4616

22-025
90

4-006