

ALBRECHT

1452.76

RD.



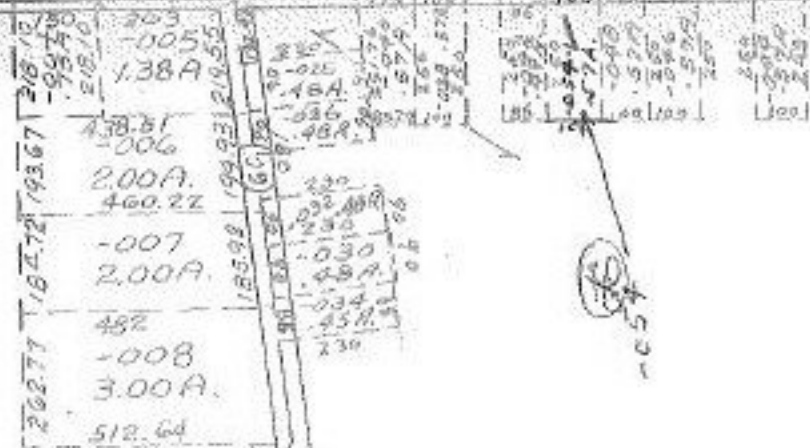
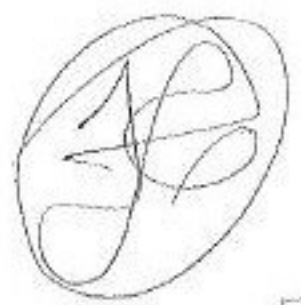
4585
4585
1/5-85

JAN 27 1970

4585

-037
87.25A.

APPROVED
LORAIN CO.
MAP DEPT.
DATE 1/14/71
10-A
BY
R. V. Kelling



-055
-044
47.44A.
46.74



-002
37.50A.

102

-003
30.60A.

