

4531
4531

672.85

APPROVED
LORAIN CO.
MAP DEPT.
DATE 12/15/70
03-00-~~417~~ AVB
BY 017
R.J. Kelling

S.S. 7-17-54
JAN 5 ENT'D

-020
~~-023~~
11.68A

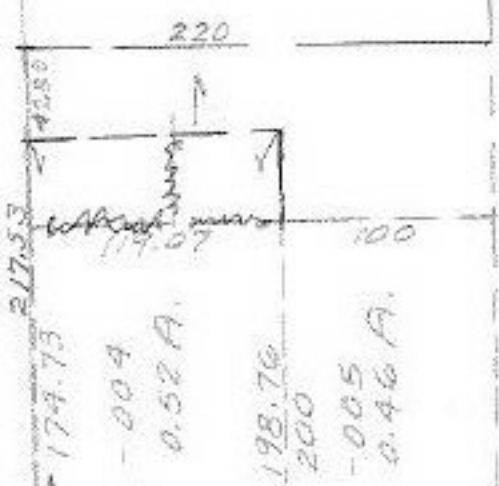


574.89

660

939.15

see -006
541A



RD. 7

RIDGEVILLE

22.88⁻⁰²⁴