

4492

APPROVED  
 LORAIN CO.  
 MAP DEPT.  
 DATE 11/30/70  
 14-00-015-E  
 BY  
 R. J. Kellin

107

- 035  
 61A

- 036  
 77A

- 037  
 61A

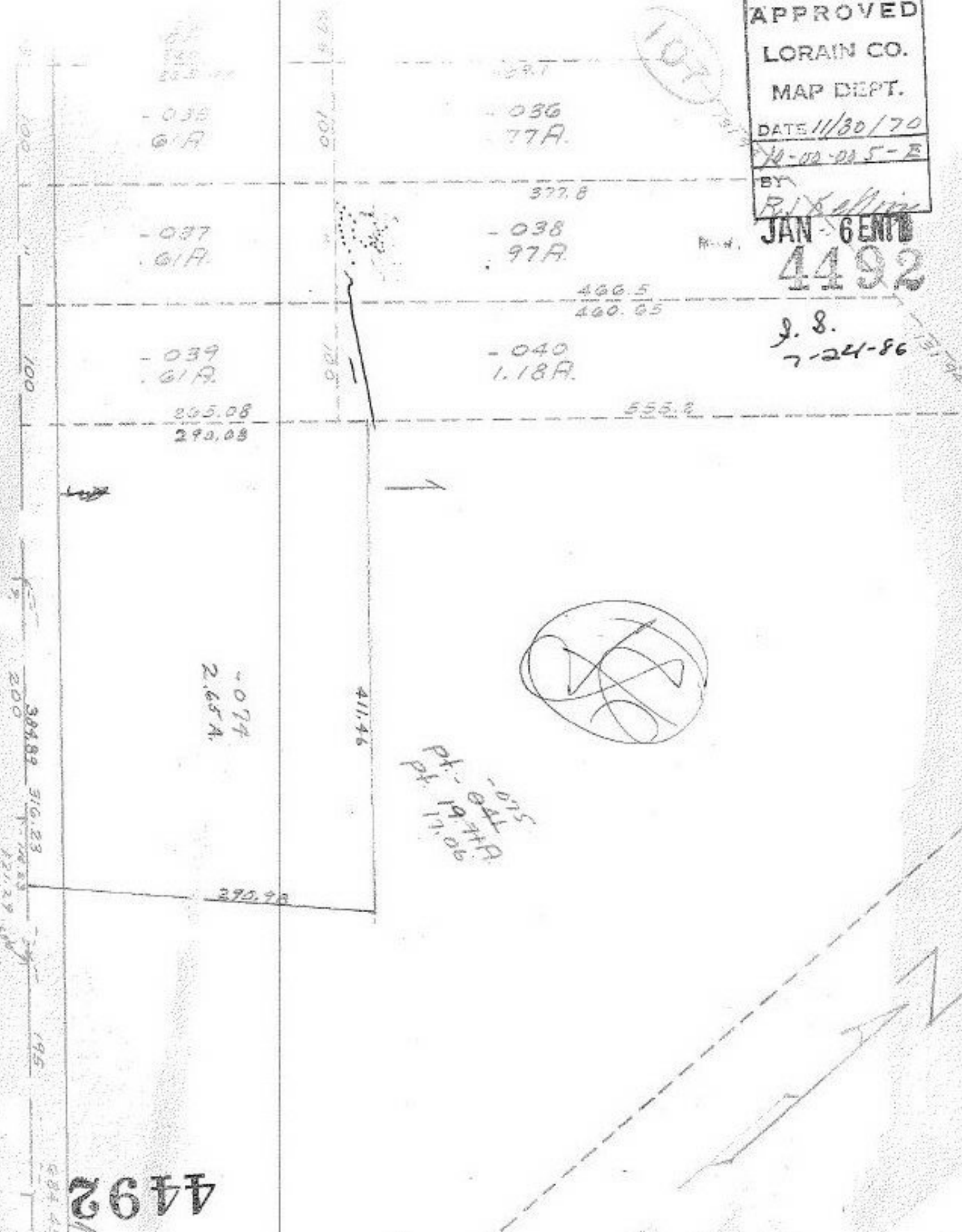
- 038  
 97A

- 039  
 61A

- 040  
 1.18A

JAN 6 1971  
 4492

J. S.  
 7-24-86



100  
 100  
 100  
 200  
 388.89  
 316.23  
 195  
 684.45

265.08  
 290.08

377.8

466.5  
 460.65

555.2

4074  
 2.65A

411.46

290.98

570  
 19.00  
 19.00  
 19.00  
 19.00

4492