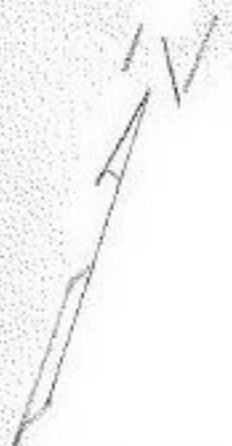


APPROVED  
 LORAIN CO.  
 MAP DEPT.  
 DATE 11/24/70  
 11-005070-A  
 BY R.V. Kelling

4486



OBERLIN — CLEVELAND

O.L. 70  
 O.L. 69

-033  
 2.00A.

-053

1.09A

-054

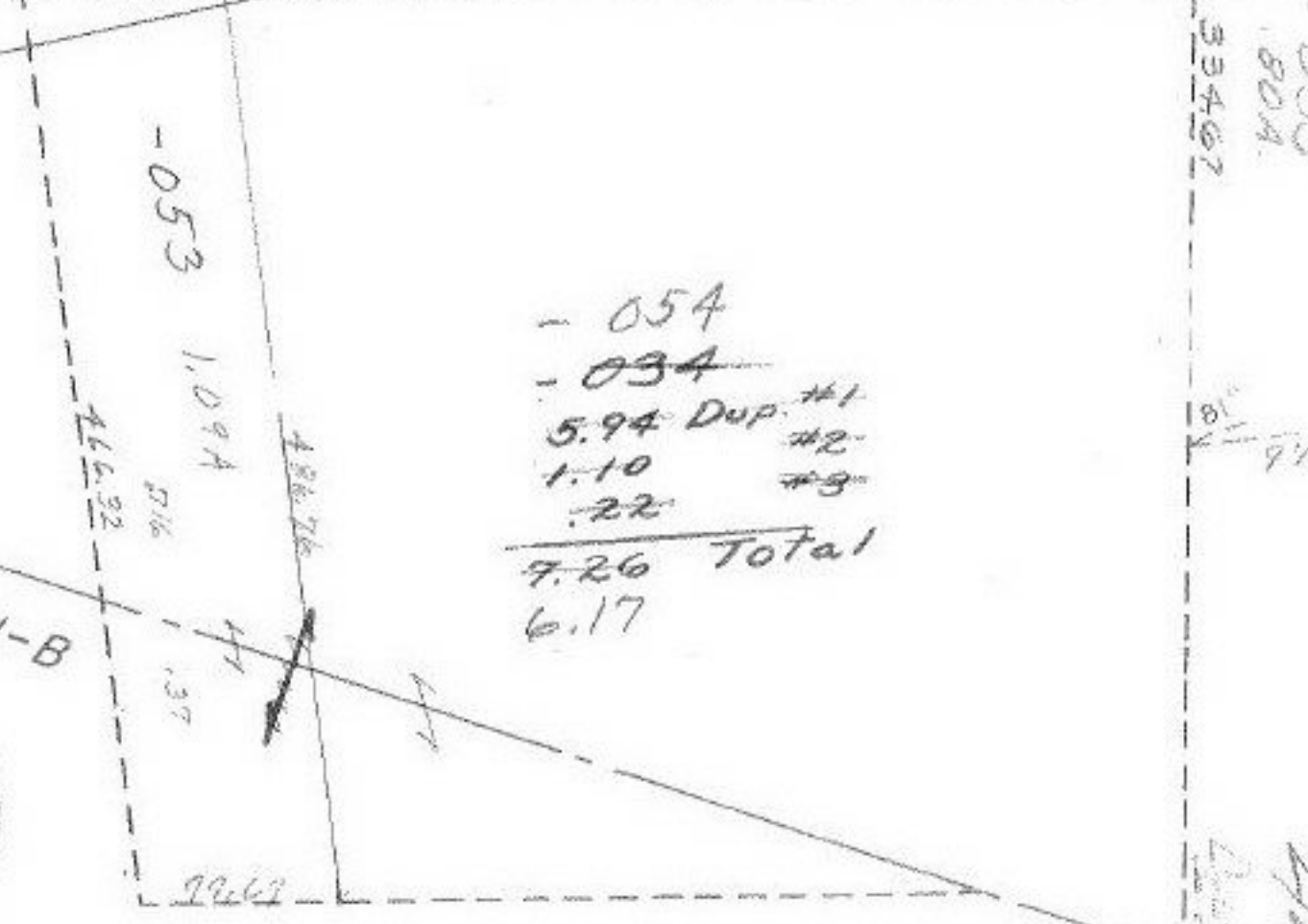
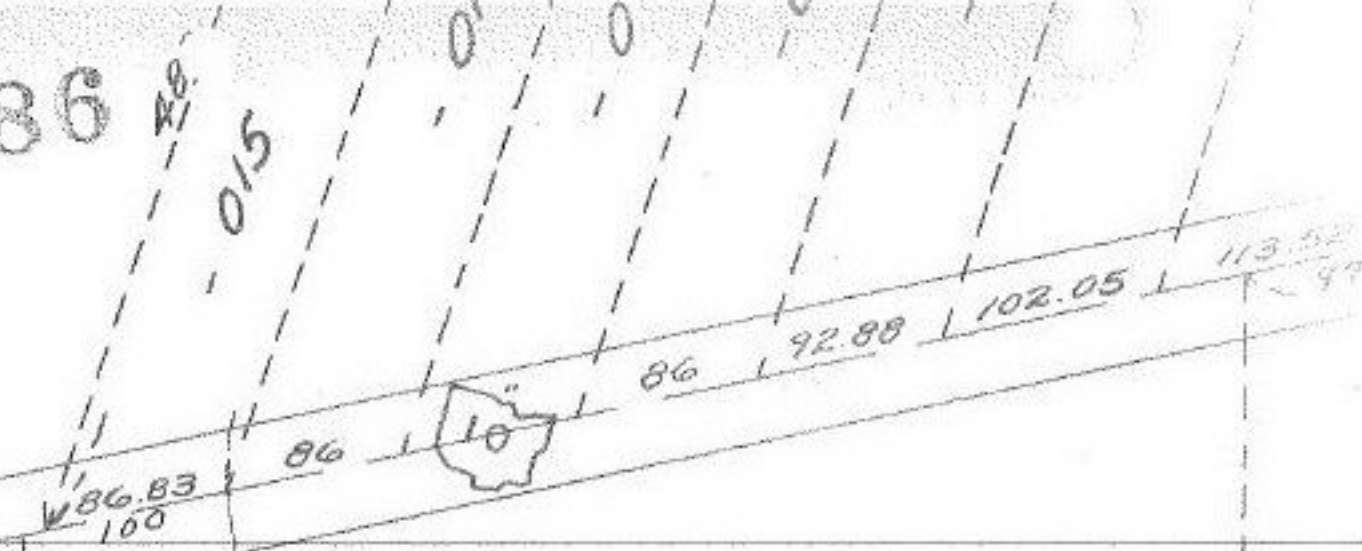
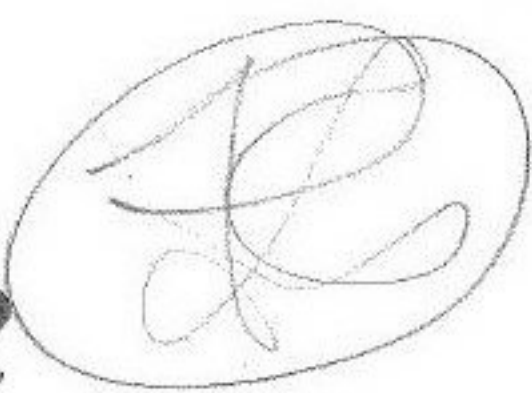
-034

5.94 Dup. #1  
 1.10 #2  
 .22 #3

7.26 Total  
 6.17

SEE 11-B

TWP.



000  
 80A  
 33467  
 11  
 4486  
 4486