

SEVEN

VOL. SEVEN VOL.

24

PINES

PINES

SUB. PG.

SEVEN

WESTWOOD DRIVE



200

30 - 020  
140

82 - 025  
142.50  
142.54

83 - 021  
141.64

84 - 022  
140.73

85 - 023  
135

86 - 024  
100

32 - 021  
143.35

31 - 056  
142.50  
142.54

75 - 026  
141.64

76 - 027  
140.73

77 - 028  
139.97  
7.87

78 - 029  
139.93

79 - 030  
158.87

80 - 031  
188.78

81 - 032  
144.20

55 - 049  
145

56 - 053

57 - 034

58 - 035

59 - 036  
18.43  
17.60

60 - 037

61 - 038

104.14

106.08

1 - 001  
135.38

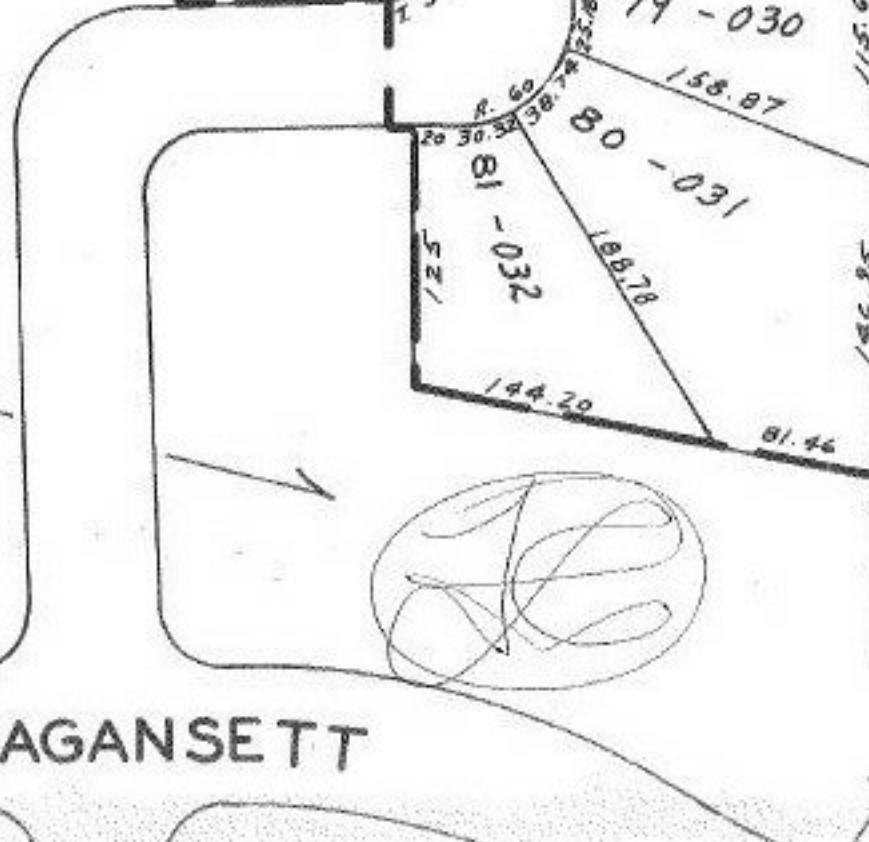
74 - 002  
135.17

73 - 003  
135.07

72 - 014  
135.01  
15.67

71 - 005  
135

70 - 012



NARRAGANSETT

4423

NOV 19 1970

APPROVED

LORAIN CO.

MAP DEPT.

DATE 10/20/70

02-02-005-A

BY RA Kelling

7-17-86

S.S.

02-02-005-A

4423