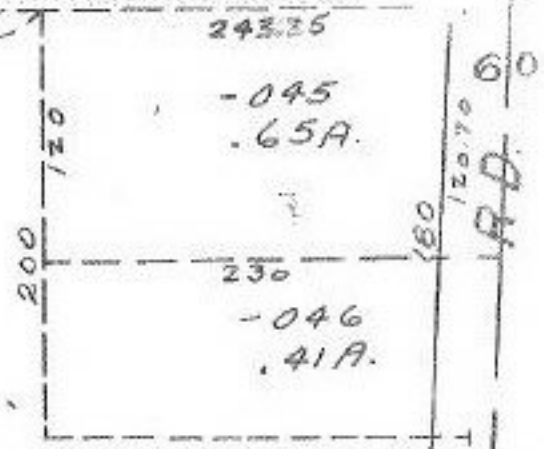
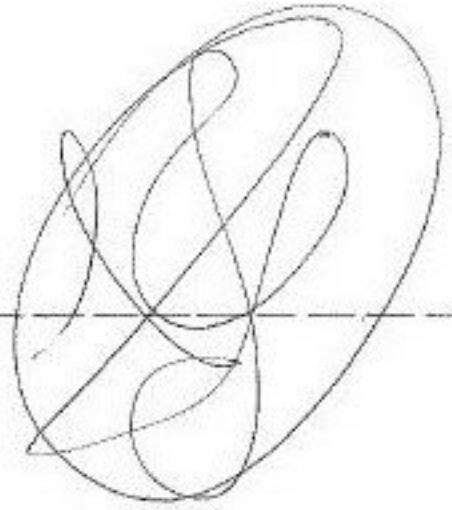


4385

OCT 16 1920

APPROVED  
 LORAIN CO.  
 MAP DEPT.  
 DATE 10/9/20  
 4-20-015.1  
 BY *W. H. King*

232.69  
 120  
 112.69



717.85

-020  
7.59A.

A.D. 60

352  
400

7-17-86 L.L.

935.95

-057  
 -022 2.42A.  
 4.44A. 736.03

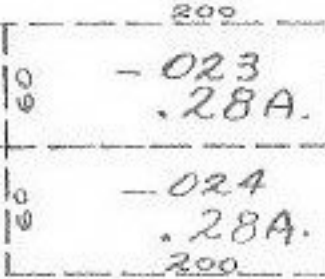
-056 1.01A.  
 736.025

-055 1.01A.  
 736.12

-025  
 2.00 A.  
 936.12

936.19

-026  
 2.77A.



262

264

4385

2.24

60 898.69 112.69

93.08

5.51

200

112.69

93.08