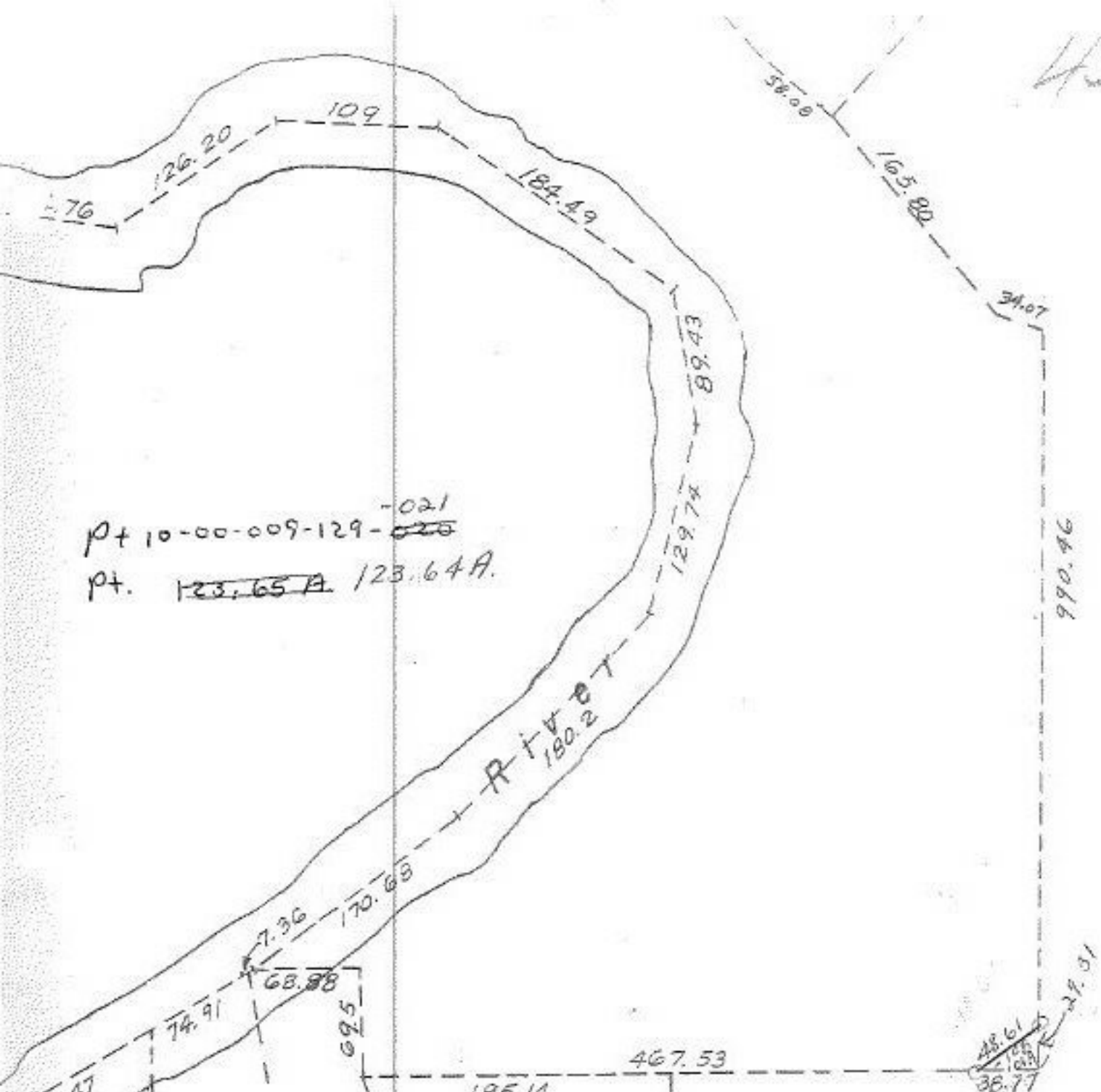


4372



pt. 10-00-009-129-~~025~~⁻⁰²¹
 pt. ~~123.65 A~~ 123.64 A.

R + V
 180.20

-080
 .93A
 910.84
 -058
 .88A
 321.84
 68.40
 -101
 .94A
 232.83
 -061
 1.25A
 -060
 .26A
 141.51
 34A
 102.41
 128.80
 .057
 10.21
 68.40
 10.22
 10.06
 10.00
 18A
 14.05

SEE 10-00-013-B

(Handwritten signature)

OCT 30 ENVD
4372

APPROVED
 LORAIN CO.
 MAP DEPT.
 DATE 10-15-70
 10-00-013-A
 BY *J. Ballant*



*D. D.
 8-1-86*

(Handwritten signature)