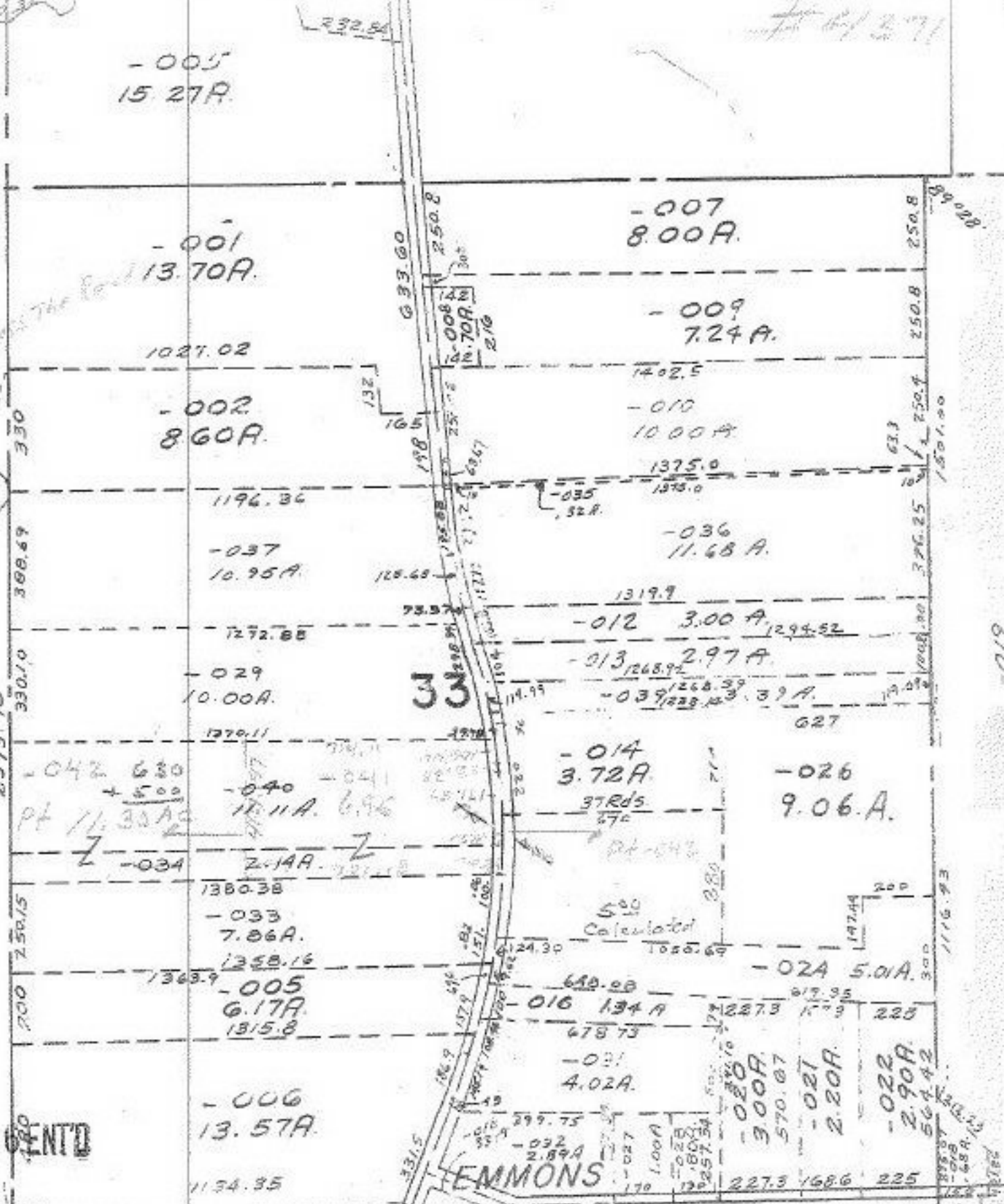


10/27/71

-005
15.27A.

11.11
2.14
13.25
6.30
6.04
11.30
Remainder

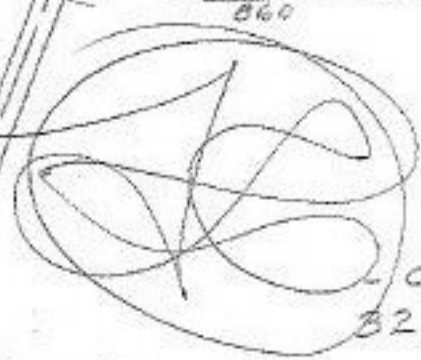
96.47
11.21
171.54
33.38
166.44
419.61



OCT 1 1971

11/27/71
APPROVED
LORAIN CO.
MAP DEPT.
 DATE 10-7-71
 126
 BY L.W. HALL

001 24A.
 1005.61
 2.43A
 657.03
 005 2.95A
 2.95A
 8/1/86



018
 32.93A Dup #1
 .04A Dup #2
 32.97A Total

-019

-002