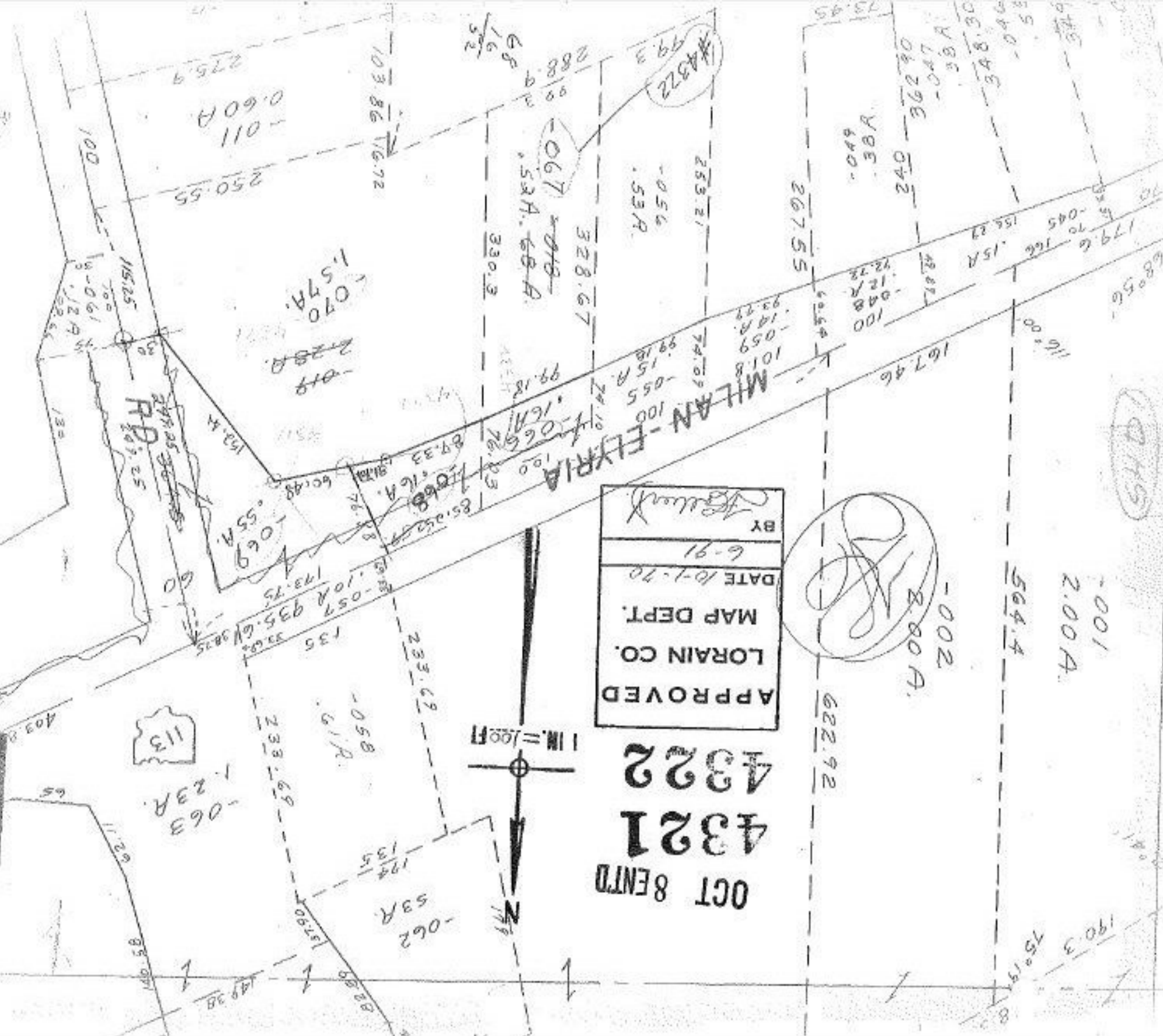


2.13
 1.57
 2.23
 1.57



APPROVED
 LORAIN CO.
 MAP DEPT.
 DATE 10-1-70
 BY [Signature]

OCT 8 ENTD
 4321
 4322



049

-001
 2.00A

564.4

-002

2.00A

622.92

190.3
 75°19'0"

68°56'

116°08'

167.46

100

12.22

154.23

242

38A

06790

58

101.8

14A

93.72

74.09

253.21

4322

056

53A

328.67

067

53A

68A

288.90

1/6

68

330.3

99.18

16A

76.03

85.25

108

108

108

108

108

108

108

108

108

103.86

176.72

1.070

1.57A

2.28A

2.28A

2.28A

2.28A

2.28A

2.28A

2.28A

2.28A

2.28A

2.28A

2.28A

0.60A

250.55

100

15.25

100

100

100

100

100

100

100

100

100

100

100

100

100

100

100

100

100

100

100

100

100

100

100

100

100

100

100

100

100

100

100

100

100

100

100

100

100

100

100

100

100

100

100