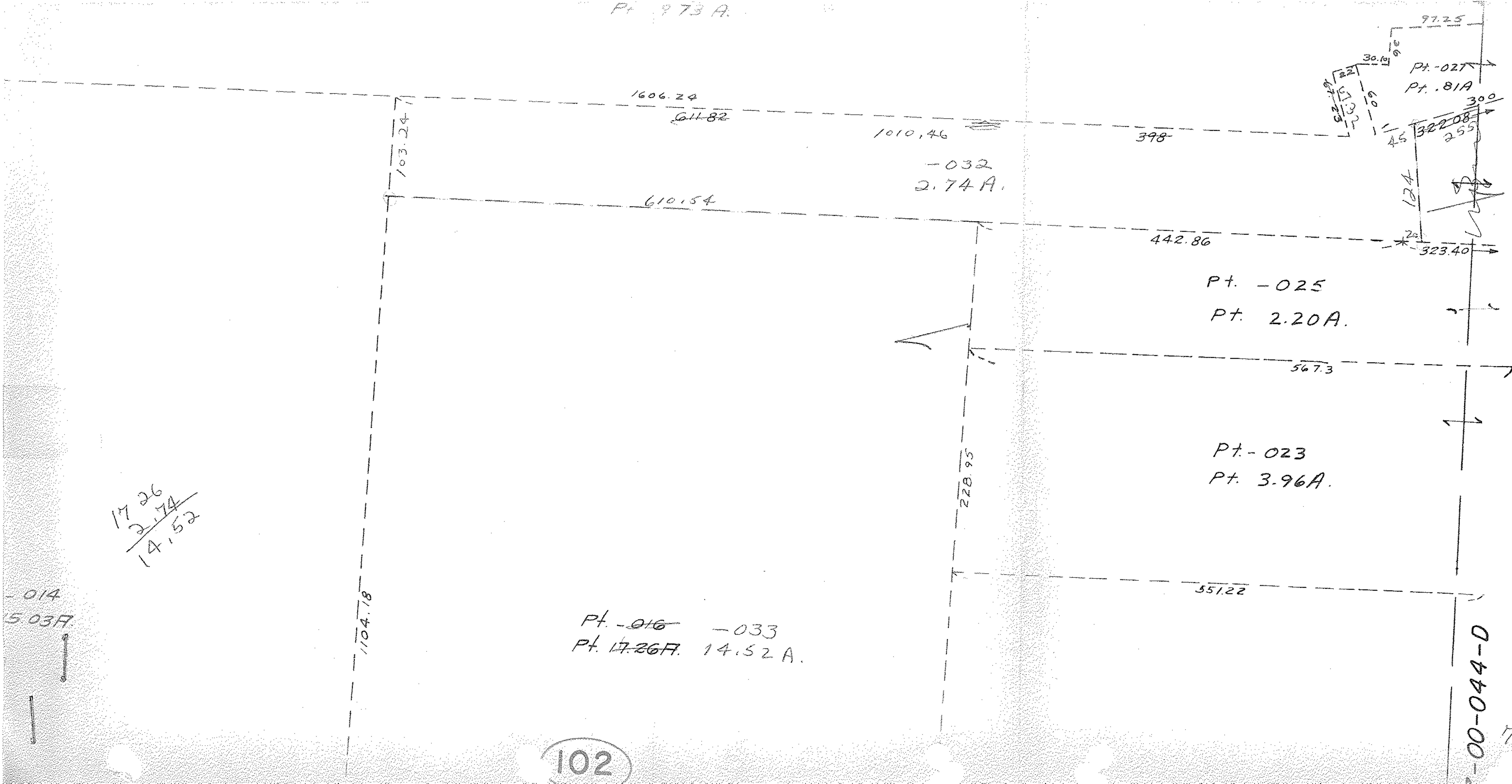


Pt. 973 A.



$$\begin{array}{r} 17.26 \\ 2.74 \\ \hline 14.52 \end{array}$$

014
5.03A

Pt. -016 -033
 Pt. 17.26A 14.52A.

102

[Handwritten signature]

OCT 8 1970

4308

APPROVED
 LORAIN CO.
 MAP DEPT.
 DATE 9-25-70
 7-00-044-C
 BY *[Signature]*

7-00-044-D

7-00-044-C