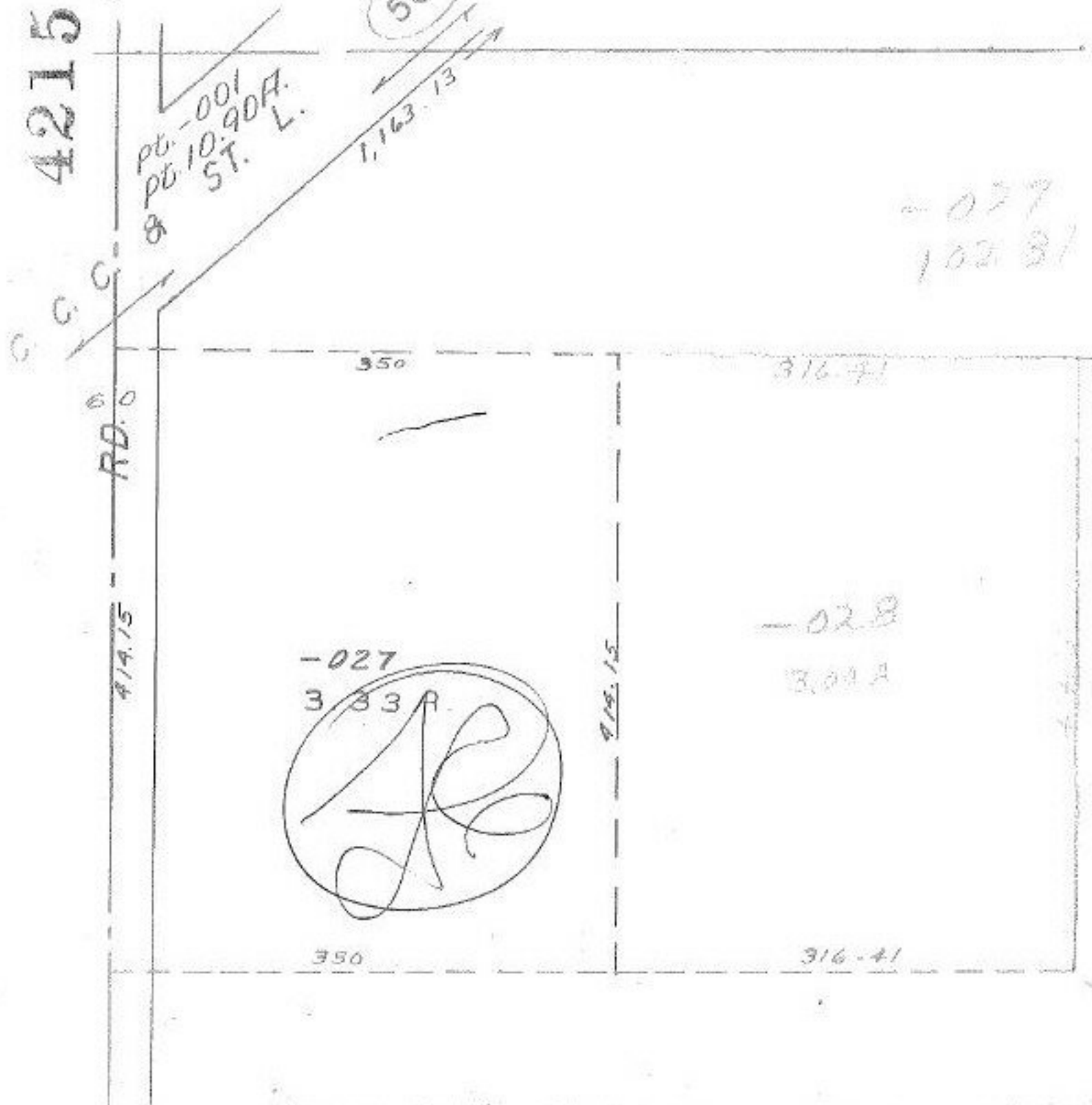


4215



pt. -001  
pt. 10:90A.  
8 ST. L.

500

1,163.13

-027  
102.31

350

316.41

RD. 0

RD. 15

RD. 15

-027  
333A

-028  
309A

350

316.41

4215

RD-SC-L  
8.8

APPROVED  
LORAIN CO.  
MAP DEPT.  
DATE 8/17/70  
18-10-035-C  
BY  
R.J. Keating

AUG 20 1970

-007  
C 25 D