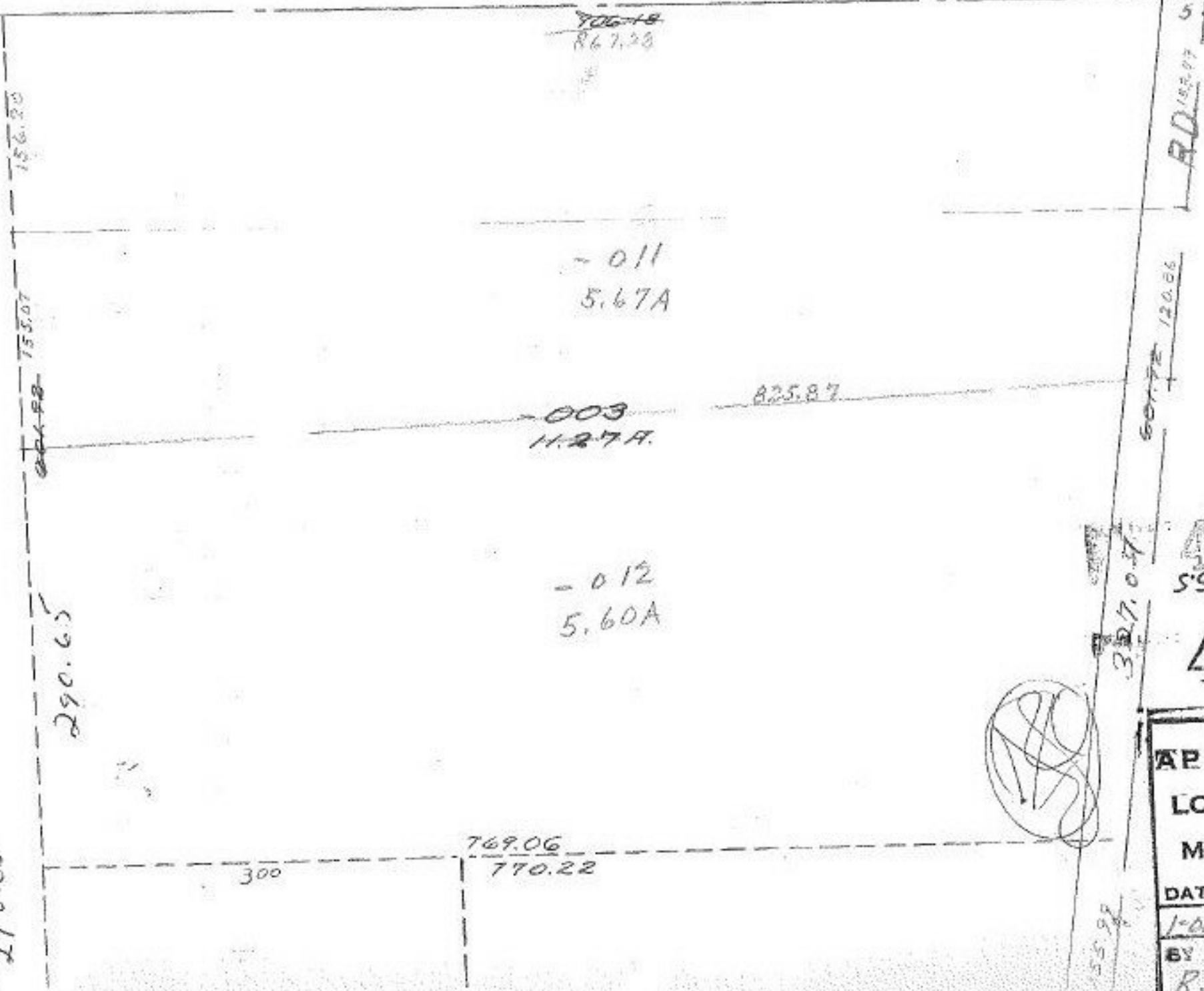


4174

601.92
155.07
446.85
156.20
290.65



RD 152.07

601.72 120.06

327.07

55.92

~~706-18~~  
R67.28

-011  
5.67A

-003  
11.27A

-012  
5.60A

825.87

769.06  
770.22

300

601.92
120.86
481.06
153.99
703.27.07

4174  
S'S 38-11-6

4174



**APPROVED**  
**LORAIN CO.**  
**MAP DEPT.**  
 DATE 8/6/70  
 1-00-02B-A  
 BY  
 Ron Kelling

417-70327.07