

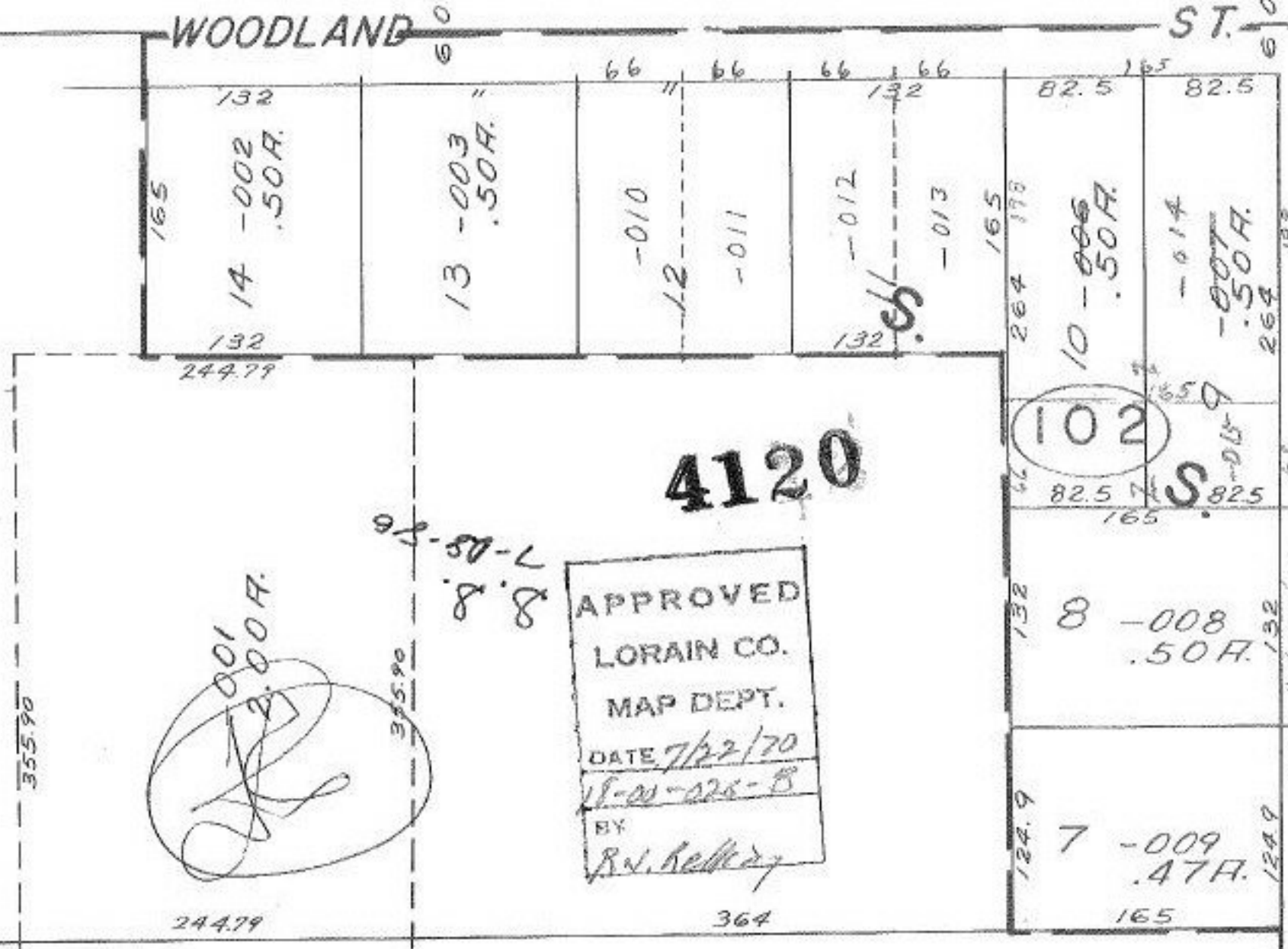
SEE 18-00-027-D

4120

WOODLAND ST.

ST.

PT - 015  
PT 5.41A.



4120

APPROVED  
LORAIN CO.  
MAP DEPT.  
DATE 7/22/70  
18-00-026-B  
BY  
R.V. Kelley

8.8  
7-05-76

PROSPECT 8-13-70  
18-00-026-B  
124.9  
124.9  
124.9

KENT

743.25

007

002  
25A.  
003  
25A.