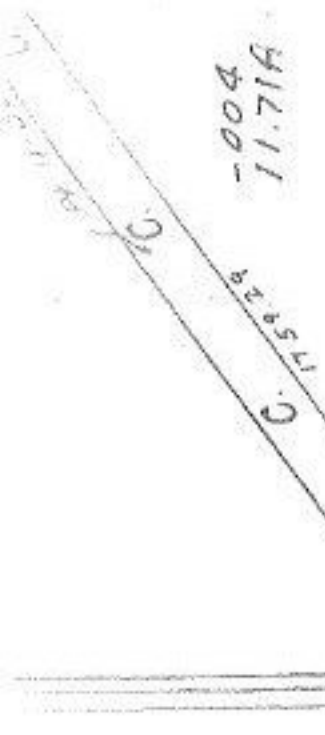


4083



-004
11.71A

175.229

1435.5
-002
2.95A

-006
0.57A
200

-009
0.57A
125

1446 5.11A

-011
8.57.32

2017.37
174.30

588.62
-006
1.66A
588.63

-001
38.46A

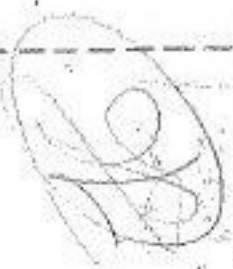
-016
29.30A

1444.25

24

-007

64.00A



-018
19.20 AC

-008
20.00A
350
-017
8.80AC
550

4083

APPROVED
LORAIN CO.
MAP DEPT.

DATE 7-10-70
BY L. H. HALL

S. P.
8-27-30

1442.37

-013
8.71A

1683.92

-014
7.49A

-009 1089.3 2.80A

2886.4

681.62

-003
22.74A

-017
14.26A

682.70

REED 557.76

2885.52

1089.3

1290.3
1288.47

1198.55

396.7

Done on Maps 8-13-70 LWH 016
15.61 A

11-A

89.85

Copy 1841.54

1536.50
-012

237.42
1841.54