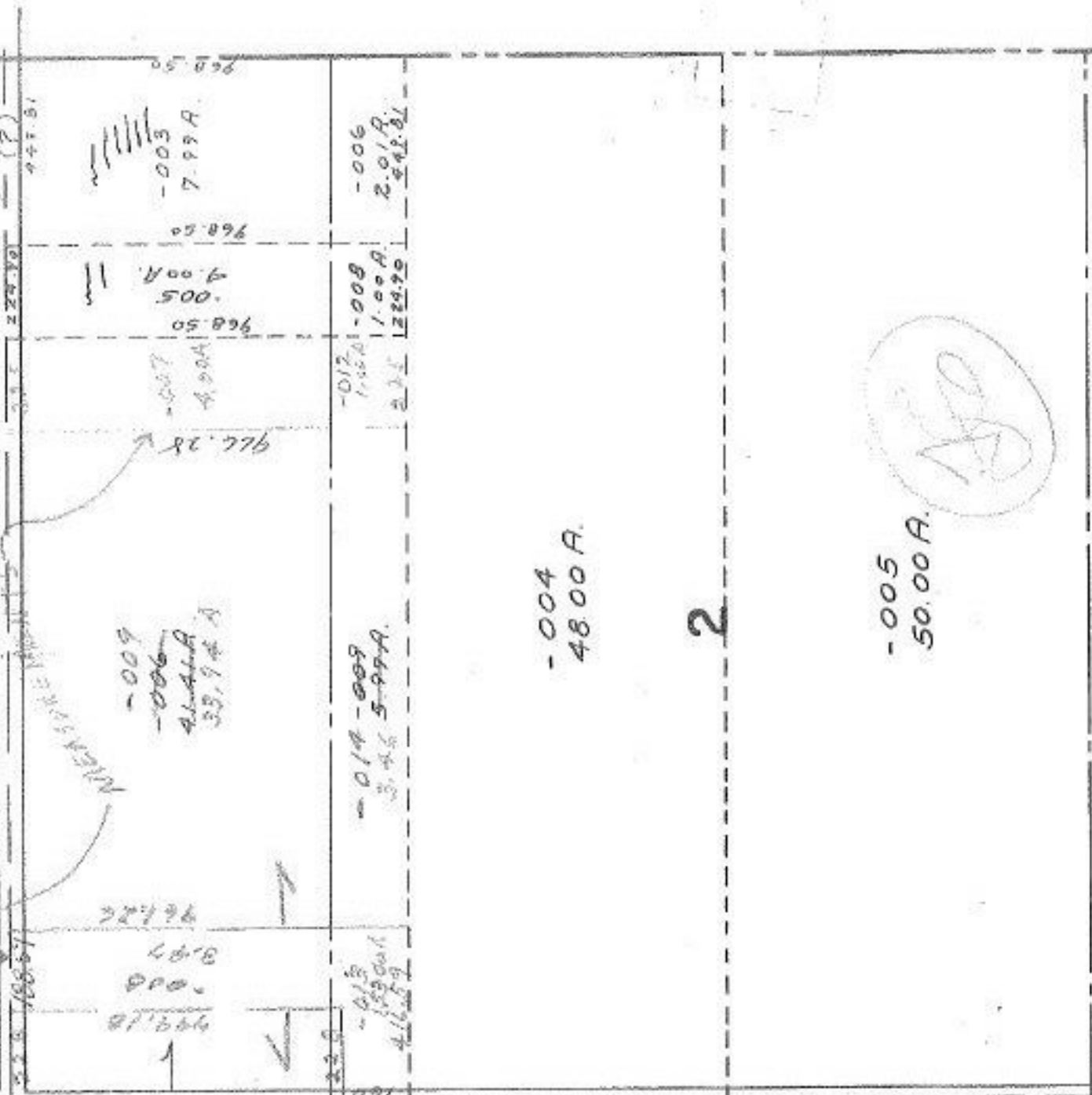


RD 4001



-009  
-006  
41-1-1-1  
33.9 A

-003  
7.99 A

-014-009  
3.45 5-99A

-006  
2.01 A

-004  
48.00 A

2

-005  
50.00 A



APPROVED
LORAIN CO.
MAP DEPT.
DATE 2/24/70
BY R. J. Kelling

4001

-001  
111.00 A

QUARRY

8-13-70 | Done on Maps L.M.B.