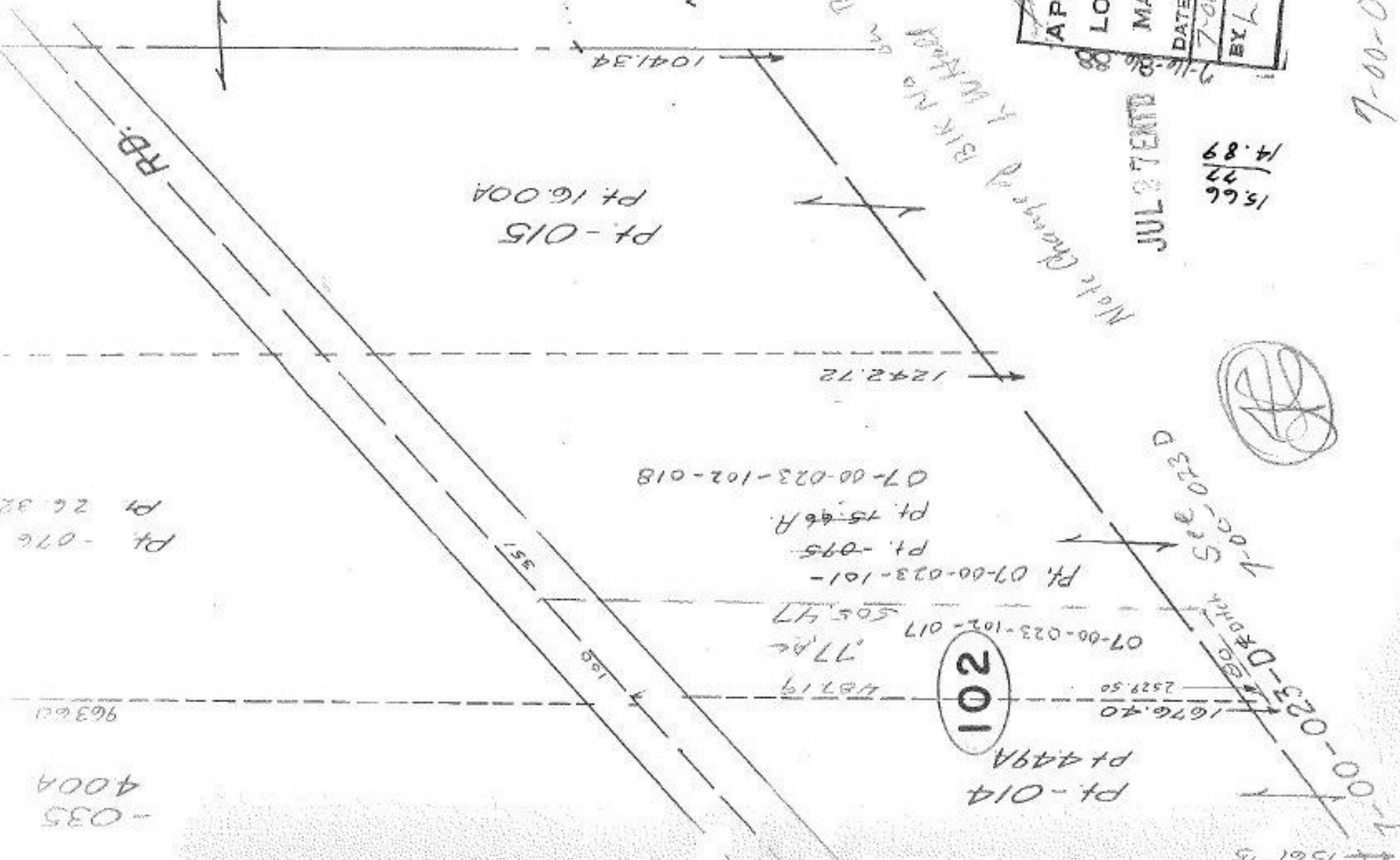


6989



APPROVED
 LORAIN CO.
 MAP DEPT.
 DATE 6-23-76
 7-00-023B
 BY L W Hall

JUL 2 1989

15.66
 77
 14.89

102

1-00-023B
 See 101 & 102

7-00-023B

Pt. 076
Pt. 26.32

963.20

-035
400A

1561.15