

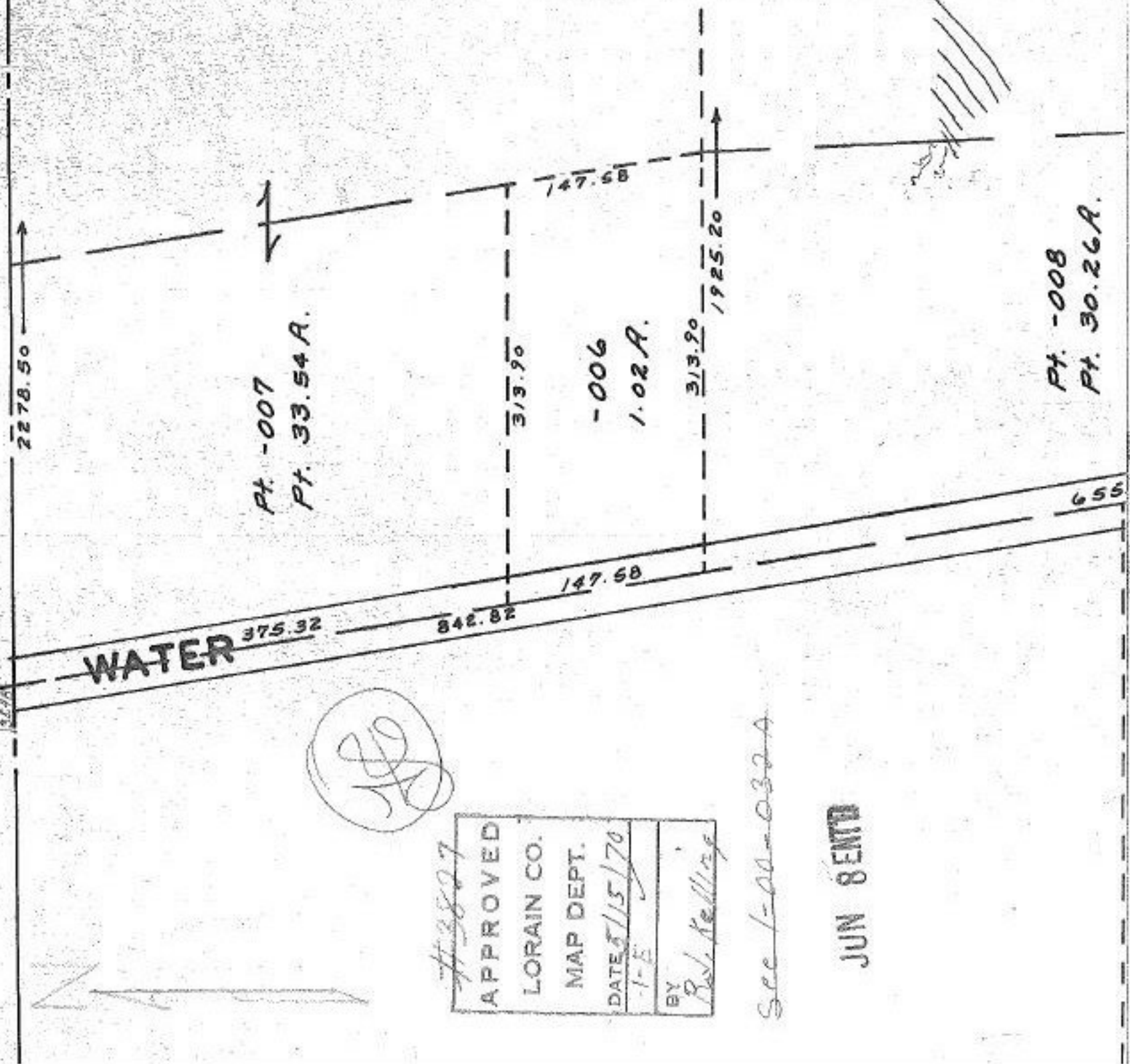
#3887

O.L. 17 - 23/16A

009
23-22A

1" = 100'

93.91
89.39
23.76



(Handwritten signature)

#3887

APPROVED
LORAIN CO.
MAP DEPT.
DATE 5/15/70
BY R. Keating

See 1-00-032A

JUN 8 1970

Pt. -008
Pt. 30.26A.