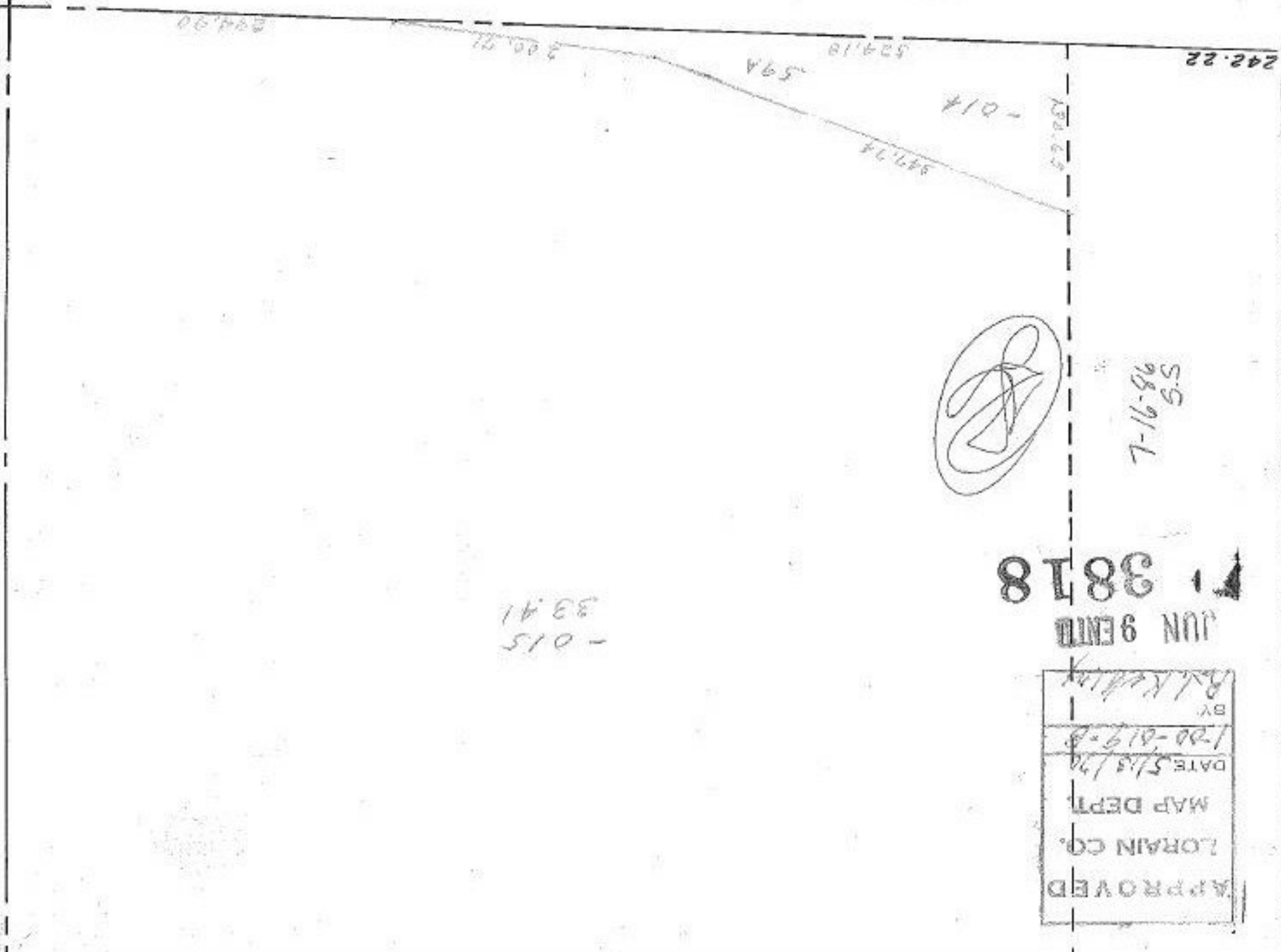


N

3818

SEE 1-00-030-B



- 015  
3341

7-16-86  
S.S.  
98-91-L

3818

APPROVED
LORAIN CO.
MAP DEPT.
DATE 5/13/70
1-00-019-B
BY A.L. Keating
JUN 9 1970

242.22

138.63

- 014

547.74

59A

524.18

300.91

204.00