

#3707

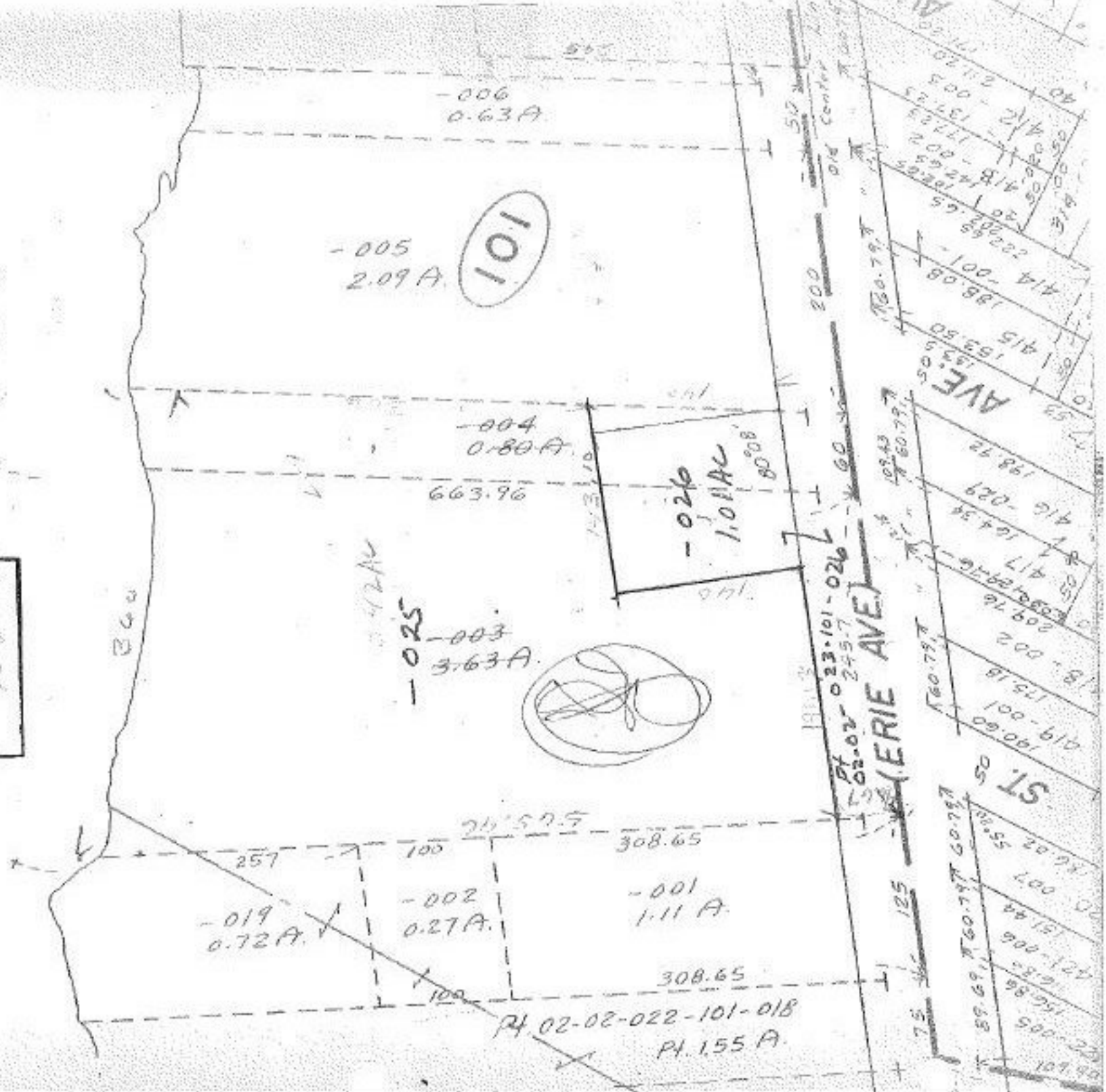
JUN 9 1970

f a k e

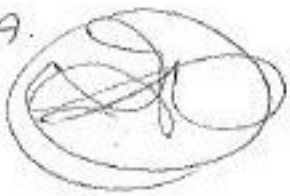
APPROVED
LORAIN CO.
MAP DEPT.
DATE 4-17-70
62-02-023
BY L. W. Cook

7/6/70
T/S

363
80
2,443
342
101



101



ERIE AVE

ST. 50

Pt. 02-02-022-101-018
Pt. 155 A.