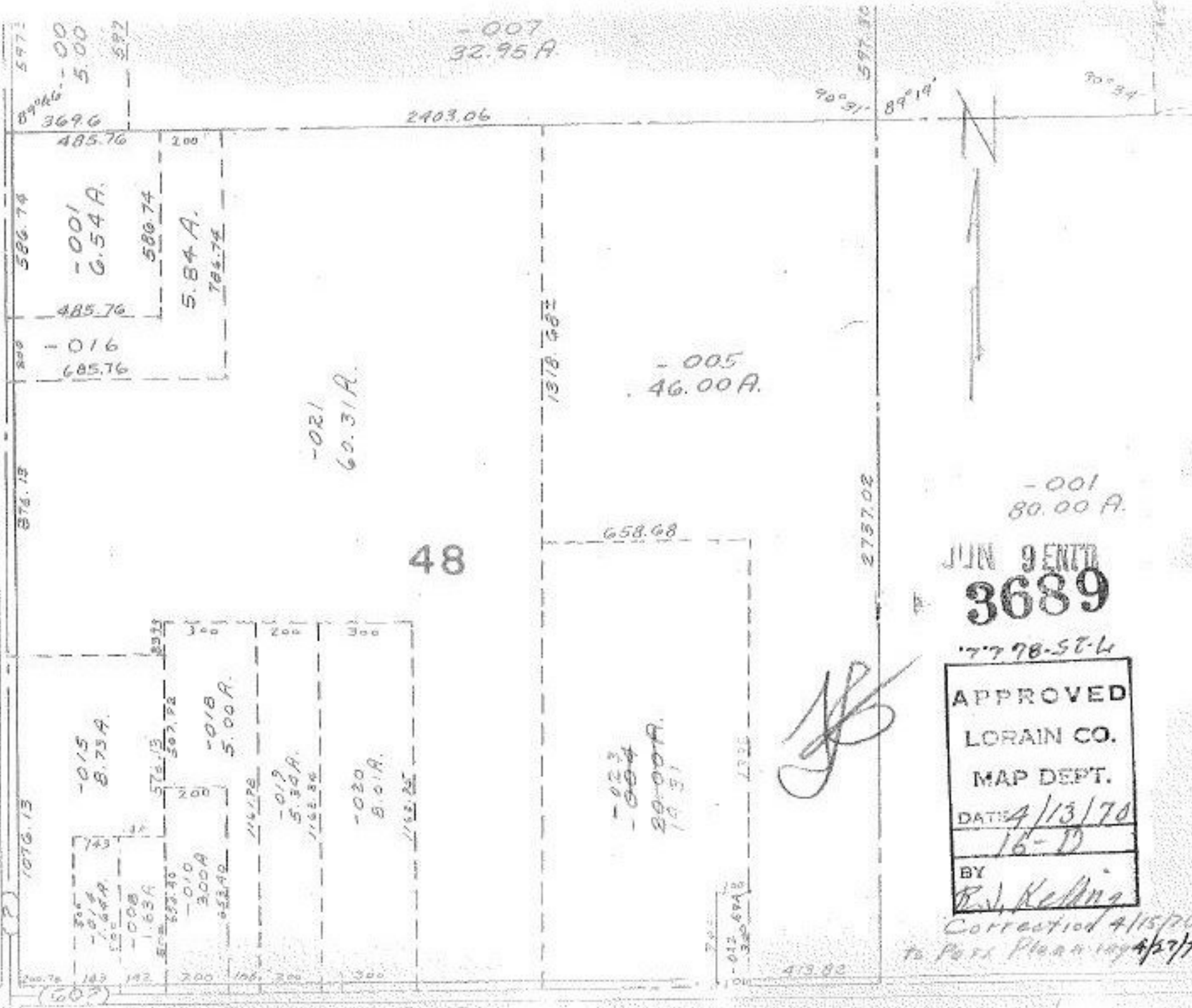


3689

ISLAND



- 007  
32.95 A

89°46' - 00  
3696  
485.76  
586.74  
597.80

- 001  
6.54 A.  
580.74  
485.76  
5.84 A.  
701.74  
- 016  
685.76

- 021  
60.31 A.

- 005  
46.00 A.

- 001  
80.00 A.

48

658.68

- 015  
8.75 A.

- 018  
5.00 A.

- 019  
5.34 A.

- 020  
5.01 A.

- 023  
- 024  
29.00 A.  
1.63

JUN 9 1970  
3689

7798-564

APPROVED  
LORAIN CO.  
MAP DEPT.  
DATE: 4/13/70  
16-11  
BY: B.J. Kelting

Corrected 4/15/70  
to Part Plan 104/27/70

MEDINA - FLYRIA