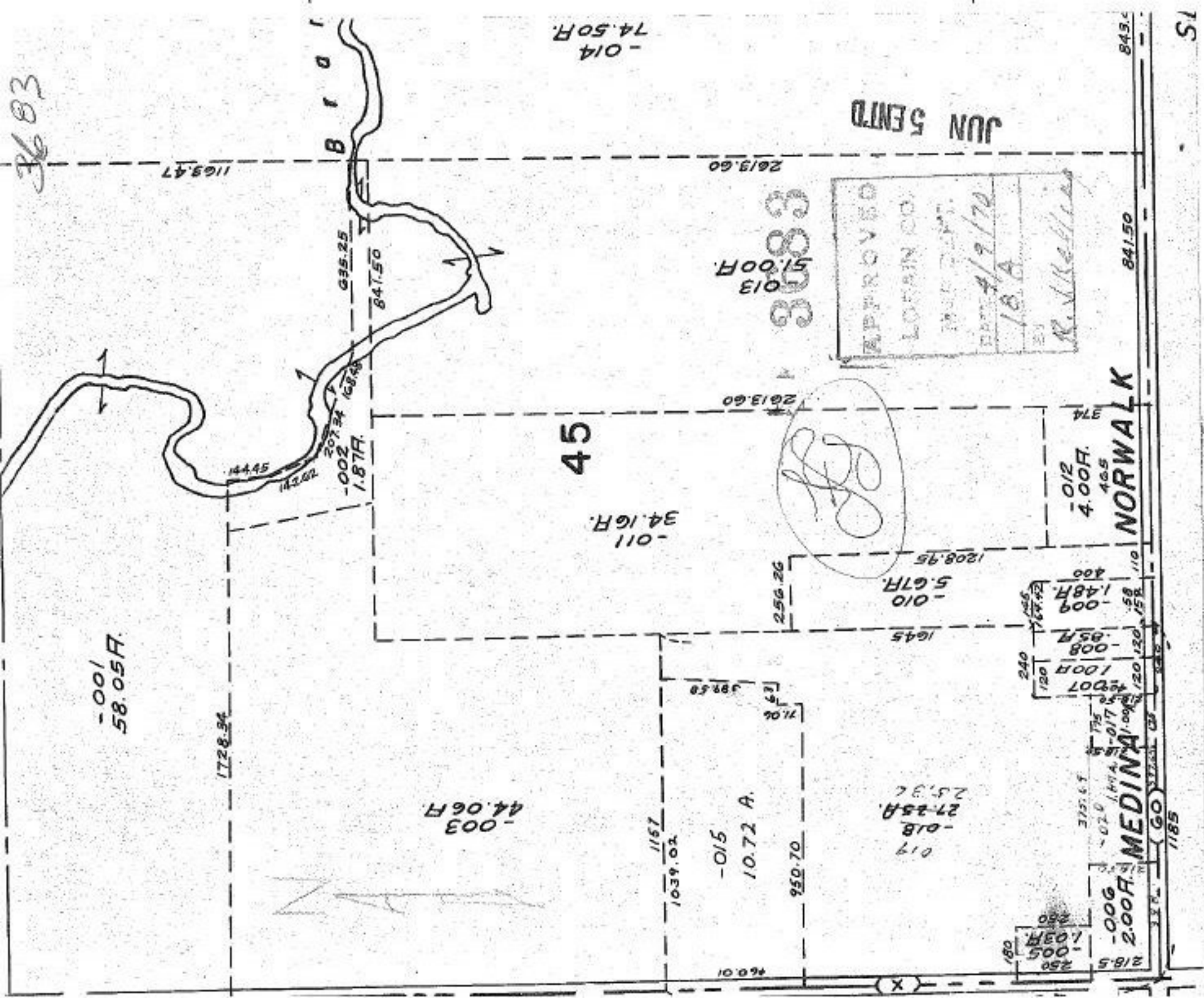


3603



-001
58.05F.

1728.94

-003
44.06F.

45

-011
34.16F.

1039.02

-015
10.72 A.

950.70

019
-018
27.25A.
25.92

460.01

2613.60

51.00F.
013
3683

2613.60

256.26

-010
5.67F.

1645

1208.95

258
-005
1.03F.
250

-006
2.00F.

375.67

-017
1.49A.
1.75

120

120

120

120

120

120

120

120

120

120

120

120

120

120

120

120

120

120

120

120

120

120

120

120

120

120

120

120

120

120

120

120

120

120

120

120

120

120

120

120

120

120

120

120

120

120

120

120

120

120

120

120

120

120

120

120

120

120

120

120

120

120

120

APPROVED
 LORAIN CO.
 DIST. DEPT.
 DATE 4/9/70
 L.S.A.
 R. V. Medina

JUN 5 1970

NORWALK

-012
4.00F.
465

374

1185

1185

1185

1185

1185

843.4

841.50

51

51

51

51

-014
74.50F.

1163.47

B r o i

695.25

841.50

142.62

207.34

163.78

1.87F.

144.45

142.62

142.62

142.62

142.62

142.62

142.62

142.62

142.62

142.62

142.62

142.62

142.62

142.62

142.62

142.62

142.62

142.62

142.62

142.62