

#3663

SEE 11-00-092-B

-040
2.00A Dup #1
1.64A Dup #2
3.64A Total

101

APPROVED
LORAIN CO.
MAP DEPT.
DATE 9/6/70
BY 11-00-092-B
R. Kelling

3663

-057
1.60R.

-058
1.89A.

-049
.86R.

-047
1.13A.

-046
1.23A.

-048
.78R.
407.99

-039
.36A.
199.91

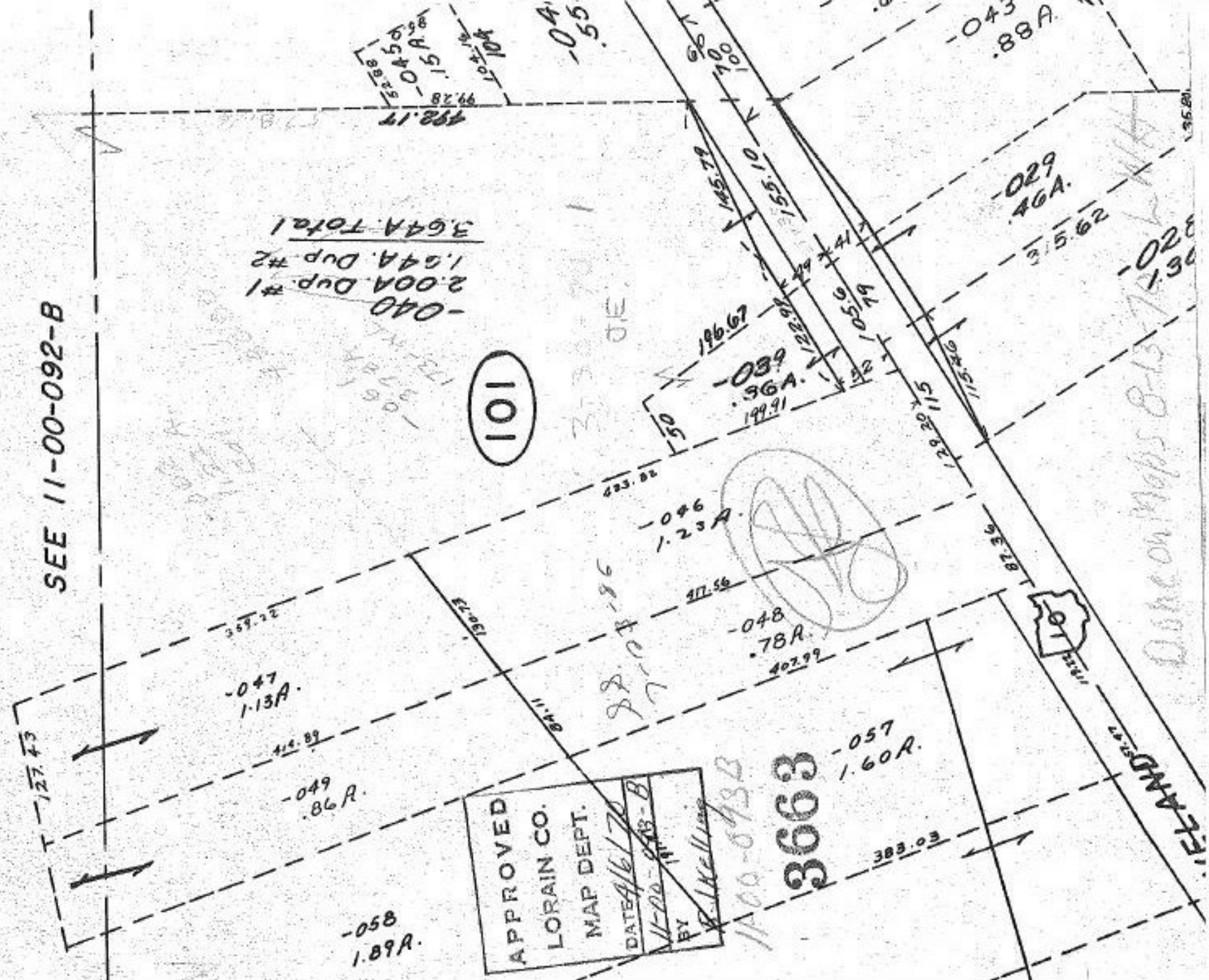
-029
46A.
315.62

-028
1.30

-043
.88A.

-041
.55

99.28
-045d
-045A
1.15A
10x10A



Check on Maps 8-15-70