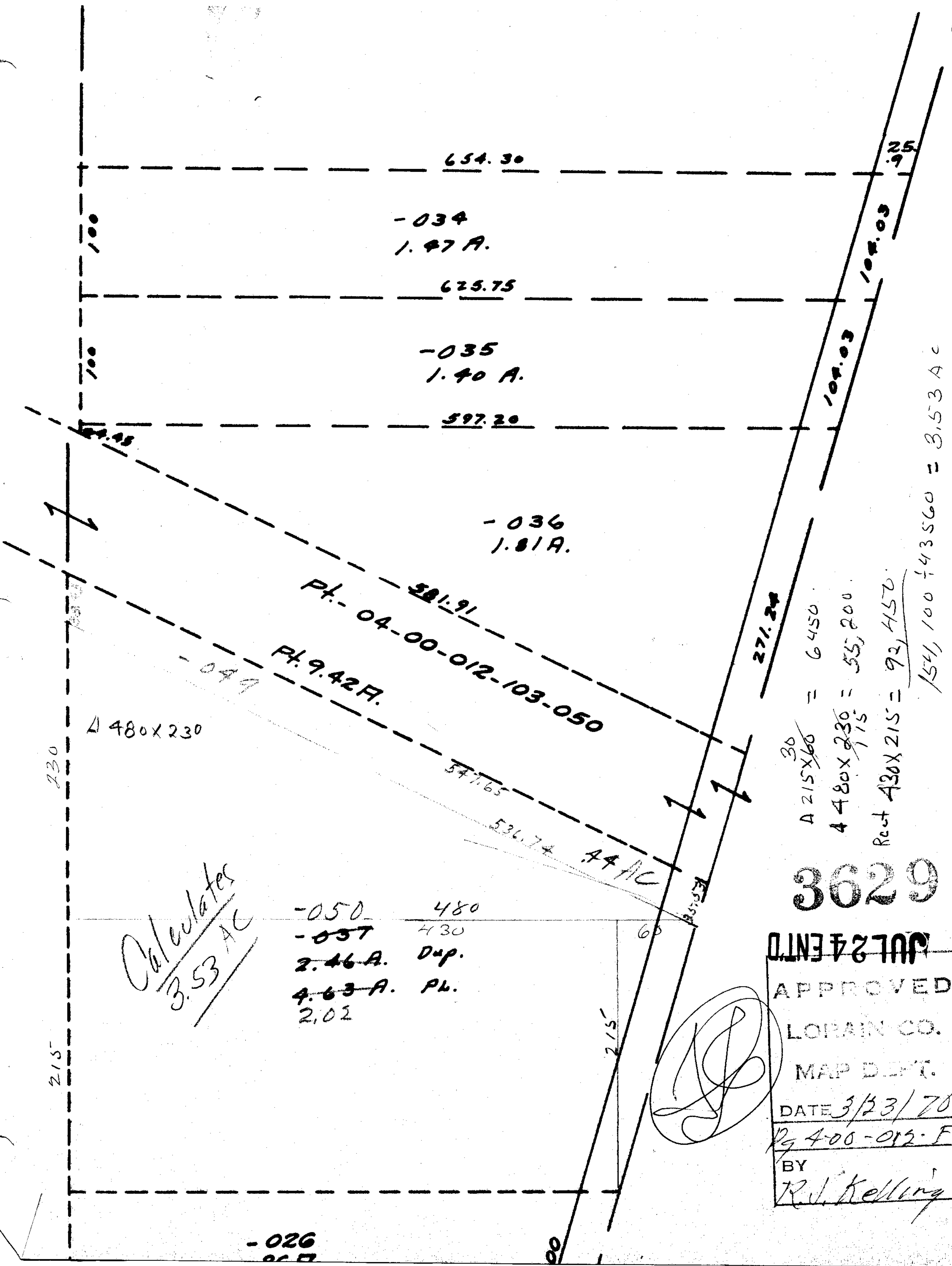


SE



$A \frac{215 \times 60}{30} = 6450$
 $4480 \times \frac{230}{115} = 55,200$
 Rest $430 \times 215 = 92,150$
 $154,100 \div 43560 = 3.53 AC$

3629

JUL 24 1970

APPROVED

LORAIN CO.

MAP DEPT.

DATE 3/23/70

By 400-012-F

BY R.J. Kelling

Calculates
3.53 AC

-050 480
 -057 430
 2.46 A. Dup.
 4.63 A. Pl.
 2.02

7-17-86 L.L.