

#3627

1452.96

60760

Abstract RD.

3627

218.13  
-98.70  
218.10  
203  
-005  
1.38A  
438.51  
-006  
2.00A  
460.22  
-007  
2.00A  
482  
-008  
3.00A  
512.64



-047  
-045  
48.93A  
48.36

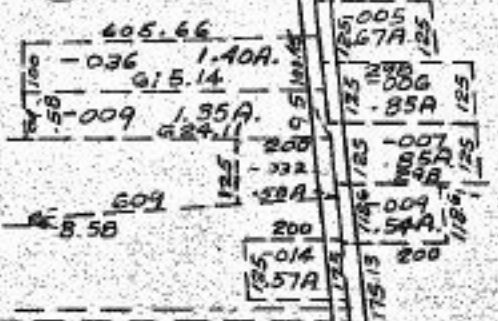
-037  
87.25A  
MAY 20 1910

-002  
37.50A.

102

-003  
30.65A.

APPROVED  
LORAIN CO.  
MAP DEPT.  
DATE 3/20/30  
10-A  
BY  
R. J. Kelling



-010  
23.22A.

2108 to E  
2901.24 to E  
10 11.07A.

1756.11 362.55

13 11.36A.  
2943

1510.94 713.59

1892.70 to E  
1336.50 to E  
-017  
25.00A.

-011  
22.60A.



R.R.

454.79